

Figure 9: View of Kings Chase/Saxon Gate development and Park Farm

R. F Burden

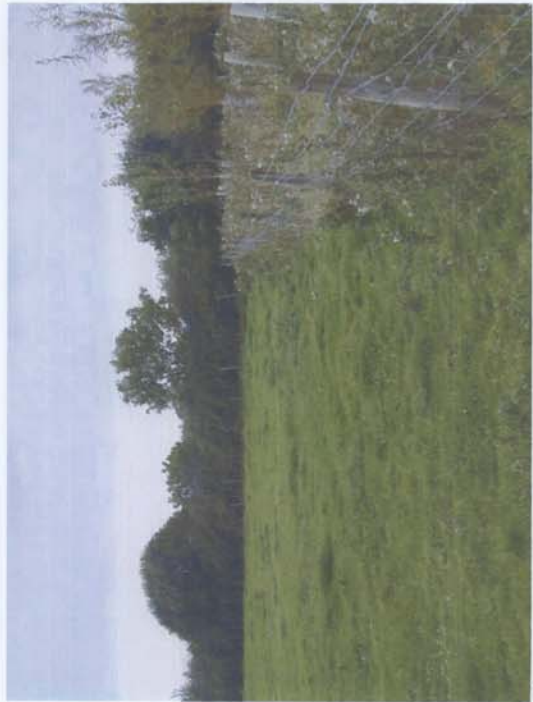


Figure 10: Tree planting and hedgerow in Park Farm

R. F Burden

Figure 10 shows the thick, A-shaped hedges, that are characteristic of the fields of Park Farm. They are dominated by blackthorn and elm, with few substantial hedgerow trees. The trees to the right are part of a tree planting scheme, in association with the Gillingham Royal Forest Project. They are a mix of species, including willow, poplar, ash, field maple and oak.

Figure 11 shows the new roundabout on the Shaftesbury Road. The building opposite is the builders merchants, highlighting the more industrial feel around the road. The buildings are in a low point, with the ground rising behind them to the west.



Figure 11: New roundabout and builders merchant from Park Farm R. F Burden