

Buckland Newton Community Plan

Report on Public Consultation Autumn 2012



March 2013

Buckland Newton Community Plan

**Report on Public Consultation
Autumn 2012**

March 2013

Contents

	Page
Introduction	5
Age of Participants	6
Housing	
Analysis of questionnaire responses	7
Notes from meeting	11
Employment and Business	
Analysis of questionnaire responses	13
Notes from meeting	15
Roads, Traffic and Transportation	
Analysis of questionnaire responses	20
Environment	
Analysis of questionnaire responses	23
Notes from meeting	26
Community Facilities and Services	
Analysis of questionnaire responses	32
Young People's Interests	
Analysis of questionnaire responses	36
Crime and Safety	
Analysis of questionnaire responses	38
Health and Social Care	
Analysis of questionnaire responses	40
Notes from meeting	49
Publicising the results of Public Consultation	55
The Next Steps	55
Appendices	
1 Parish Plan / Designated neighbourhood Plan Area	57
2 Questionnaire	58
3 Meetings publicity leaflet	69

Introduction

Buckland Newton is a rural parish situated in West Dorset, and lies approximately 10 miles equidistant from the county town of Dorchester and the market towns of Sherborne and Sturminster Newton. Buckland Newton Civil Parish covers an area of approximately 1,700 hectares, has a population of 622, with 284 houses.

At the beginning of 2011, Buckland Newton Parish Council decided to start on the preparation of a Neighbourhood Plan for the parish. A Working Group was set up of both Parish Councillors and other Parishioners who were interested in taking part in this project. The Working Group started preliminary work on the Plan, meetings being held on a monthly basis.

After further discussion in October 2011, the Parish Council agreed to additionally prepare a Parish Plan at the same time as the Neighbourhood Plan. These two plans would jointly be called the Buckland Newton Community Plan.

As a first step it was decided that it was necessary to establish the issues and concerns of the parishioners and their 'vision' for the parish. Over a period of several months the Working Group drew up a questionnaire; this can be seen in Appendix 1. After lengthy discussion it was decided to distribute these one per household in the parish, but to also make additional copies available to those households who required them, perhaps because of differing views within the household.

Approximately 300 questionnaires were delivered by volunteers towards the end of September 2012. A total of 109 completed questionnaires were returned; approximately 35%.

Additionally a number of public meetings were arranged in the Village Hall. A list of these was distributed with the questionnaire, and this can be seen in Appendix 2. This comprised a launch meeting, followed by an open information morning, and then a series of topic meetings. These meetings were also publicised by posters and banners put up around the parish.

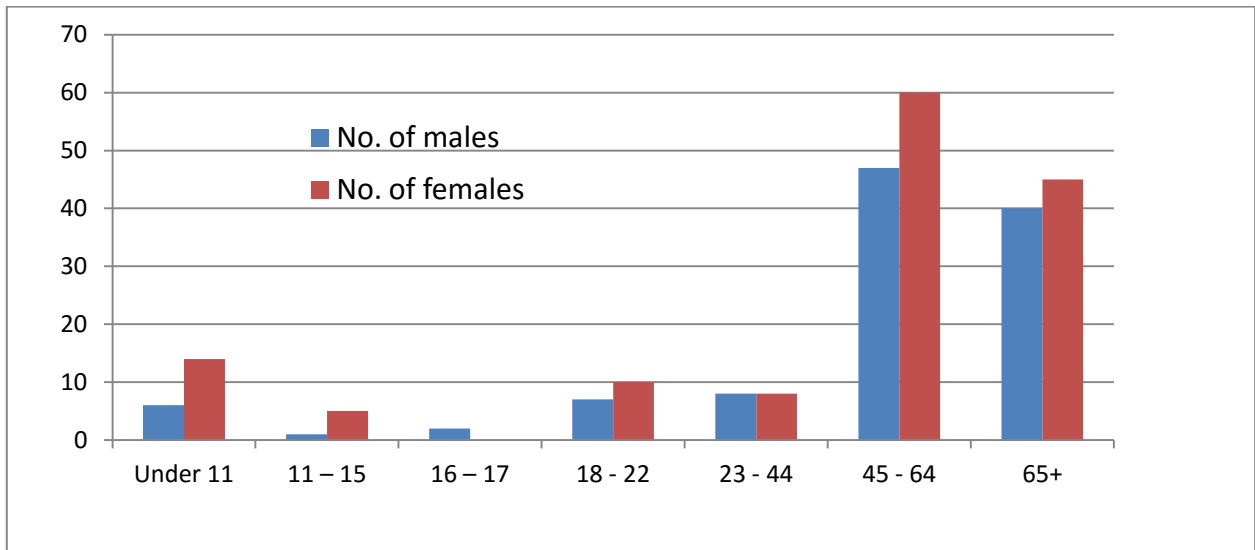
Following concerns raised after the first topic meeting on housing, an additional meeting was organised and held on the 1st November in the Parish Room.

The purpose of these meetings was twofold; firstly to help inform parishioners of the various issues in order to aid them completing the questionnaires, but also to potentially identify any solutions to the problems raised. Notes from the various meetings can be found in Section 2.

Comments and feedback from the meetings would also help further inform the Working Group in later stages of drawing up the two plans. It was felt that it would be inappropriate to count in the comments from the meetings to the questionnaire results as this could result in double counting and could skew the results.

Age of Participants

Age	No. of males							No. Of females							Total
	Under 11	11 - 15	16 - 17	18 - 22	23 - 44	45 - 64	65+	Under 11	11 - 15	16 - 17	18 - 22	23 - 44	45 - 64	65+	
Total	6	1	2	7	8	47	40	14	5	0	10	8	60	45	253



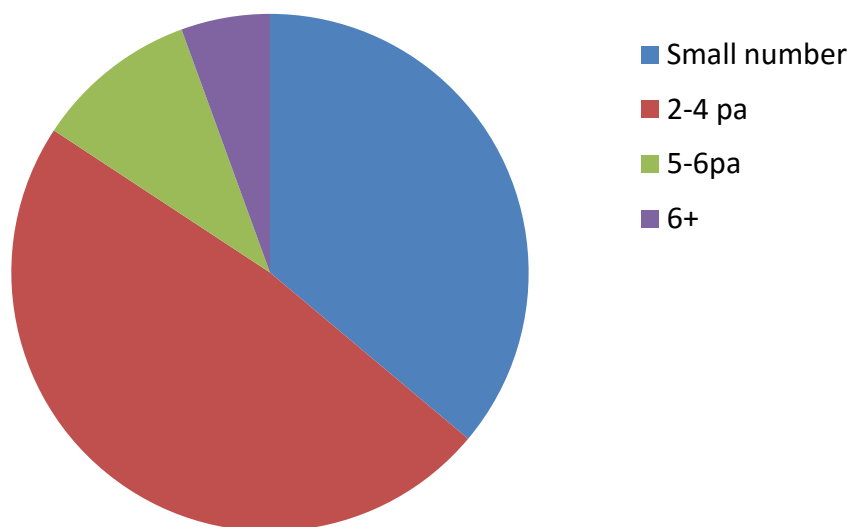
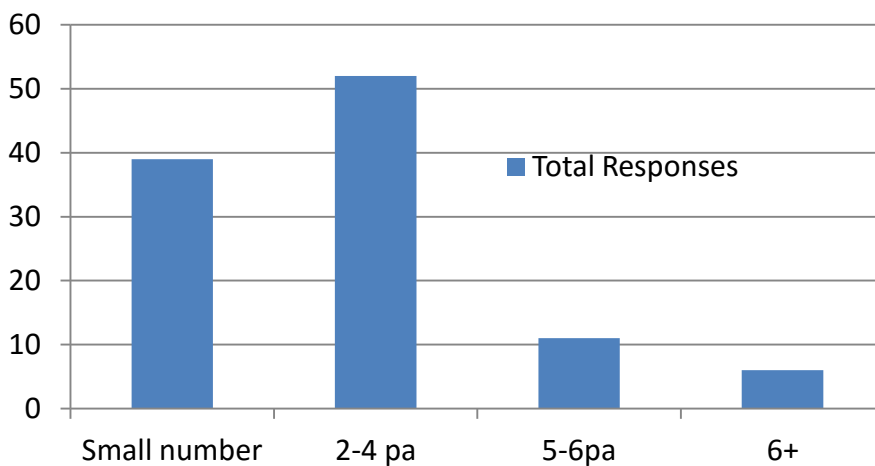
Housing

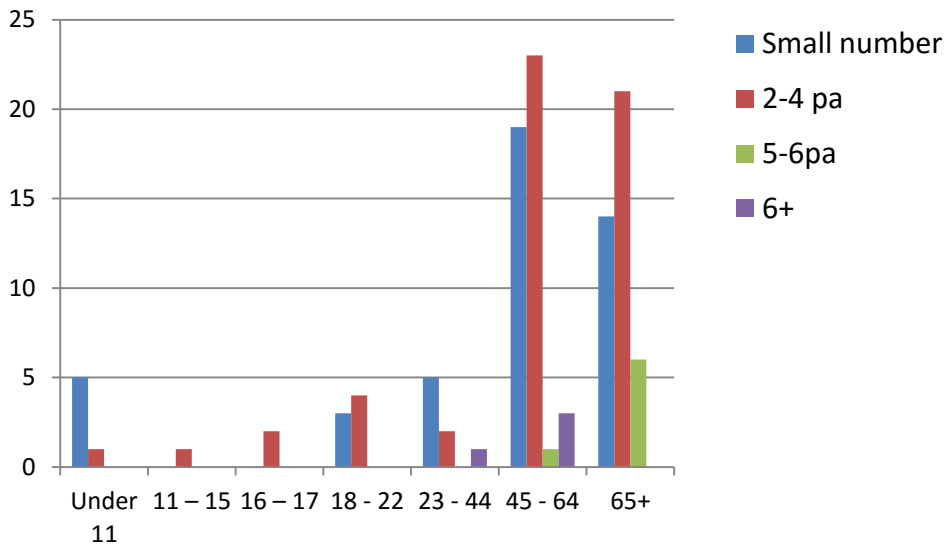
Question 1. Over the next 10 or 15 years, do you wish to see:

- a) No new housing except for a small number of individual houses
- b) An average of 2 to 4 new houses per year (e.g 20 – 40 houses over 10 years)
- c) An average of 5 or 6 houses per year
- d) More than 6 per year?

	Small number	2 – 4 per year	5 -6 per year	More than 6 per year
Total responses	39 (36%)	52 (48%)	11 (10%)	6 (6%)

Total Responses

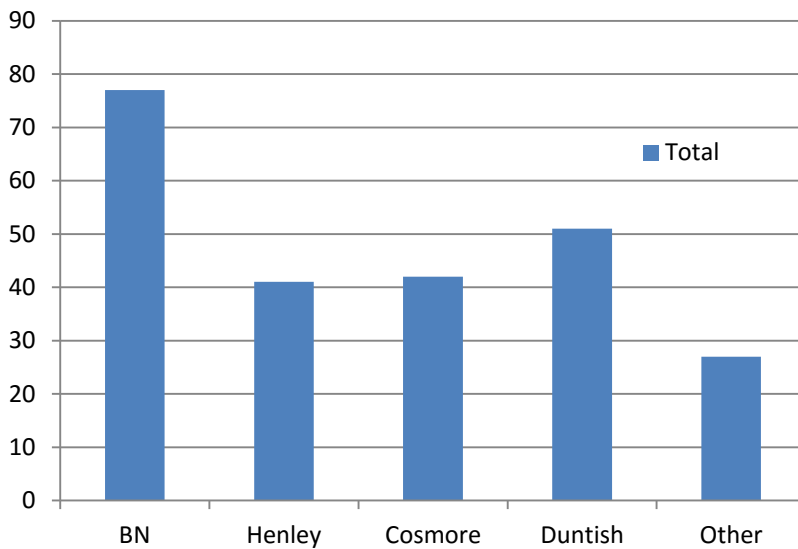


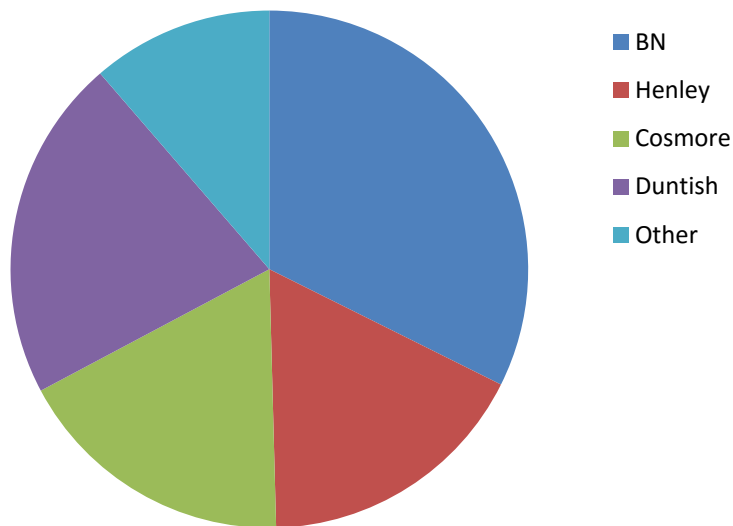


Question 2. Where would you like to see new housing?

	Buckland Newton Village	Henley	Cosmore	Duntish	Other hamlets
Total responses	77	41	42	51	27

Number of responses:





Comments made:

In fill
 All plus bookham, sharnhill & bockhampton
 Lydden Meadow
 As needed for local people eg Lydden Meadow young & elderly, so elderly stay in the area
 Any - keep it low density
 Bookham
 Bookham
 Need small, open market, affordable homes plenty of exec houses now
 Spread over the entire parish - affordable if a need is indicated
 None at all
 Pulham
 Rew & Beaulieu
 Wherever needed
 Bookham
 Any of these
 Wherever is is most suitable
 Wherever appropriate - restrictions on 2nd homes and encourage to downsize
 Village only
 Anywhere
 Bookham area
 Bookham, Sharnhill Green, Rew, Brockhampton, Beaulieu Wood
 Between shop & hillbillies
 Each case judged on merits
 Depends on space available & planning consent
 Bookham, Sharnhill Green, Rew, Brockhampton, Beaulieu Wood
 Anywhere in parish
 All
 Bookham, need affordable but spread around the community & housing for elderley, redevelop
 Cranes Meadow
 Close to school & shop
 Pulham, Brockhampton, south of Henley
 Brown field
 Nowhere
 None
 Any
 Spread evenly

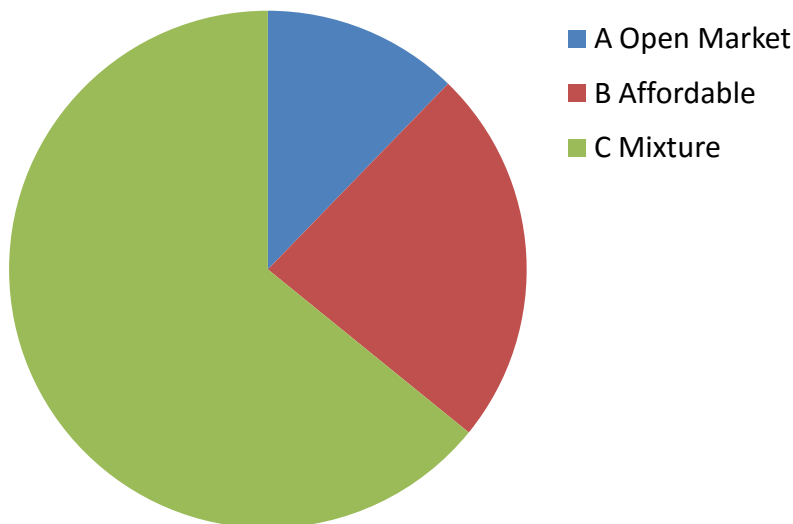
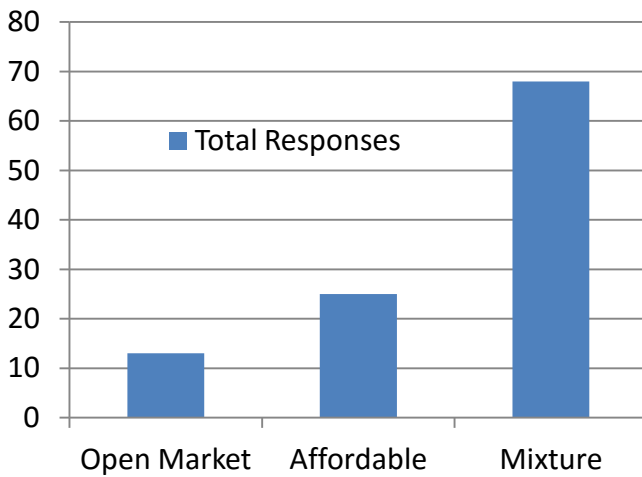
Question 3 What type of housing would you like to see?

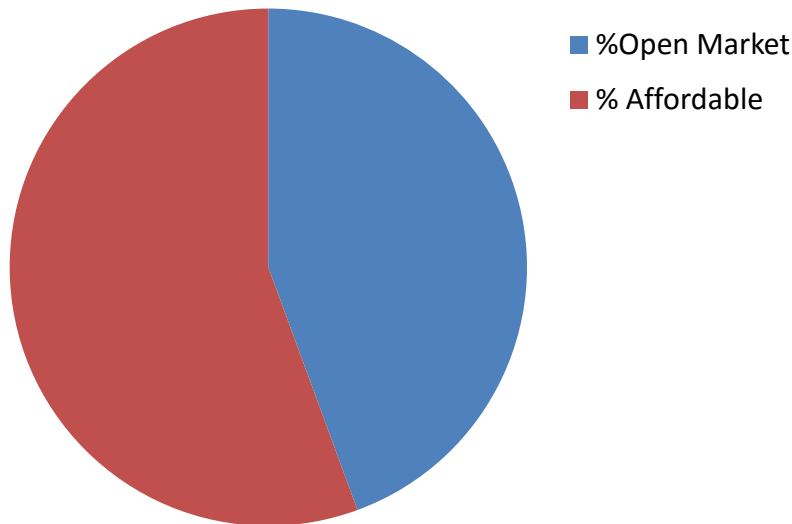
- a) Open market housing (no restrictions on who lives there)
- b) Affordable housing for local people (such as Lydden Meadow)
- c) A mixture of open market and affordable housing

If c), please give proportions of open market to affordable housing

	a	b	c	If mixture		Total	
	Open market	Affordable	Mixture	% open market	% affordable	% open market	% affordable
Total responses	13	25	68	51	49	45	55

Total Responses





Discussion meeting on houses and population - 4th October 2012

Just over 40 residents came to hear Nicki Barker (ex- District Councillor and vice chair Parish Council) and Paul Derrien (West Dorset District Council Housing Enabling Team Leader) give short presentations, before we broke up into groups to discuss various set questions.

Nicki, having lived in Buckland Newton for 35 years, gave us the historic view. The number of houses in the village had greatly increased in that time, and because the building had been done bit by bit, they have by now all fitted into the community. But, she said, although there is a need for the community to develop in the future, at the moment we have more than enough 'executive' houses and a real lack of small cottages, little terraces of the 2-up, 2-down kind which suit both young couples with one child and elderly people. We have a good balance of age groups in Buckland Newton and that needs to be maintained

It is worth noting that research has shown that over the years Buckland Newton has increased its number of houses while the population has actually dropped. More people are living alone, so we should not depend on house building alone attracting more people into the village, especially young people with children.

Paul said that in West Dorset 3500 people are on the housing list, waiting for accommodation. Where Buckland Newton is concerned, 7 want houses here, and 2 want to come and live here because they already have family here. (It was not clear whether these people have connections with the village; were born here and want to return home; want to live here because they work here; are renting privately here and want a more secure future in the village; or simply want to come and live here.)

There was some discussion on the issue of affordable housing as the majority seemed to agree that Buckland Newton needed more affordable housing, and more provision for elderly people who want to downsize and stay in the community. While developments such as Lydden Meadow can be built on an 'exception' site (that is a site outside the development line) and Open Market Affordable Housing, given the right conditions, could

also be built on an exception site, but this would exclude any development which combined Open Market and Affordable houses.

It was explained that Open Market Affordable Housing would have strict covenants in place, controlling who can buy them, and ensuring that if they are resold it would have to be at the original discount. The Neighbourhood Plan could set the conditions, including the amount of discount. (It should be pointed out here that most developers would not necessarily be willing to build nothing but affordable housing because of the lack of profit.)

Nicki made it clear that there would not be another 'Lydden Meadow' development for some time, because of the debt owing to the Council who had been a major backer of the scheme. However, she then mentioned the issue of flooding. Most people will be aware of how much rain we are now getting (2" in one night last week for example) and this has to be thought about when planning any new build schemes. She described the flood attenuation scheme at Lydden Meadow, very necessary because of its location, and said it had added a third to the cost of the scheme.

Paul gave us some information on housing schemes for the elderly in other parts of West Dorset. The issue of empty houses was raised. Jacqui Cuff said there were 3 empty properties that she knew of (there are more) spoke about the grants/funding available to help the owners bring derelict properties back into habitation. People can contact the District Council if they know of any other properties.

It was also made quite clear that what we put into our Neighbourhood Plan regarding what we want in the way of development in our community – the maximum number per year, size, type and location etc. – will, if our Plan is adopted, become **law**.

As people were already sitting at tables and thus in small discussion groups, we were then given a series of questions to answer. There was a lot of lively, not to say noisy debate, and it proved almost impossible for everyone to focus on answering all the questions. And, although most of the groups were expecting to be asked to give a report on the results of their discussions, unfortunately we were not given the opportunity to hear other peoples' opinions and conclusions.

Lesley Docksey and Jan Burnett

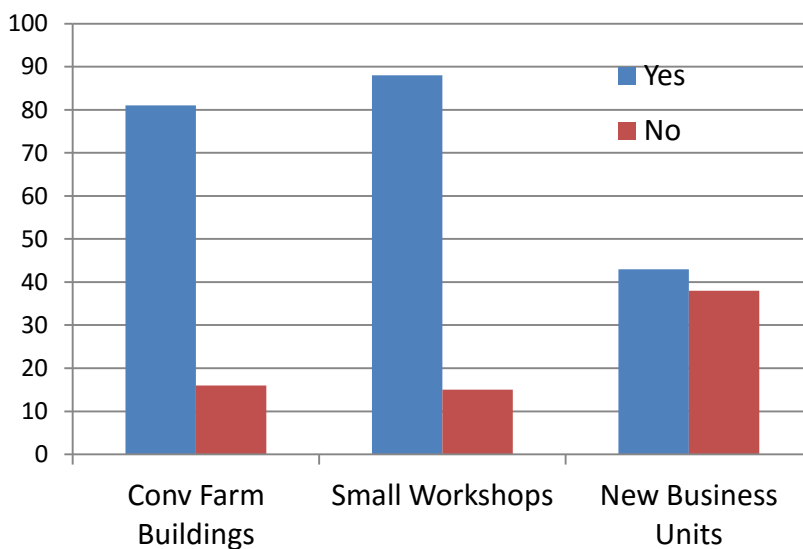
It has now been decided that a second meeting on this subject will be held at the Village Hall on Thursday 1 November at 7:00 pm.

Employment and Local Business

Question: Over the next 10 to 15 years, would you be happy to see, subject to situation and appropriate planning conditions:

- a) Suitable redundant farm buildings converted to business use
- b) The provision of small craft workshops/small business starter units
- c) The provision of a small number of new business units to rent?

	Convert farm buildings	Small workshops	New business units
Yes	81	88	43
No	16	15	38



Comments received:

Attract younger people, nursing/shelter urgently needed

Rural employment needs to increase to satisfy local demand

Utilise redundant farm buildings before new build

SMALL units using redundant farm buildings, style, traffic, noise & access all priorities

Happy for light industry not heavy or noisy

Existing businesses empty for several years

Worried about the new light industrial development replacing piggery at Castle Lane not to undermine the natural beauty of the area

Because it increases the density of traffic especially delivery vans

Only address new need (a) when existing enterprise parks full, b) ensure traffic implications thought through, c) current broadband speeds make new bus units impractical

Steven's walk offices not viable; are villages places for businesses?

Some farm buildings possibly suitable for affordable housing conversion rather than holiday lets

Need to be competitive, accessibility, cost (fuel etc) factors in take up

Small

Small units spread over parish, noise & traffic an issue, must have good vehicular access and minimum impact on the environment

None at all

The 2 office units next to village hall remain empty

Keep BN a village to enjoy without the increased traffic

Need to integrate housing & local employment strategy, ensure locals employed and new housing occupants must contribute to the village

Must have reasonable vehicular access

Small

Proviso that workshops/bus units in existing units

Activities & vehicles should not destroy tranquillity, no light pollution

Surplus already, if there was demand should employ local people

If needed

Appropriate business development that does not overwhelm village infrastructure

Should be local and sustaining local economy, jobs & in keeping with rural aspect

Providing there is demand, current units empty

Though there units currently empty

Vacant business units show new units not needed, no building on green belt

Convert to residential also

Enough in village as not all let

Prohibition on industrialisation of large farm buildings, types should be retail, office, storage & light industry (B1) with regard to noise, traffic & impact *

Change of use not allowed for GOG

New business should have planning permission & comply with AONB regulations

New business should have planning permission & comply with AONB regulations & no heavy industrial

Size important else extra traffic would be danger or nuisance

No heavy industry, units should be low impact

Ensure empty units used before new development, farming practice may change & redundant buildings may be needed for farming

More local businesses to provide local employment & increase investment in village, improve internet speed & mobile reception to enable home workers

Encourage other local services with related employment opportunities eg care home

Scale of development important, no large lorries in lanes

No heavy lorries and internet speed improved to facilitate e-business
 Already an oversupply, Sharnhill green, Court Farm and village offices all have vacancies
 More small units at affordable rent, existing too expensive
 No new capacity, as local road infrastructure would not support it
 Only new business units if no redundant premises available
 Units built and then stand empty because they are unaffordable
 B & C would be catered for by A

Discussion meeting on Business and Employment - 18th October 2012

Summary of Workshop Responses

1. **What does this area need and you would like to have with regard to business and employment?**

- Care home
- Chiropodist (visiting village hall?)
- Hairdressers
- Library
- Dentist (rentable space)
- Doctor
- Complementary treatments
- ✓ Produce more, impact less
- ✓ Increase opportunities for the future incl offering apprenticeships
- ✓ Encourage local food businesses
- ✓ Consider annual food event
- ✓ Low impact care home
- ✓ Village Hall as a meeting hub for business
- ✓ Improve communications between each other and outside world
- ✓ A central information office
- ✓ Convert small farm buildings

2. **What support can we offer existing businesses?**

- ❖ Continue to encourage and use shop, pub and all local businesses if possible
- ❖ Create a trade directory to advertise services
- ❖ Create a Trades Agency
- ❖ Make better use of BN Website, consider who it is aimed at, what it is for etc
- ❖ Put Lydden Vale News on website
- ✓ Be more positive about local businesses already here and put ourselves out to support them
- ✓ Encourage tourism
- ✓ Improve public transport
- ✓ Consider mobile phone mast, sympathetically placed, poss on church tower? To help improve communications
- ✓ Consider accommodation for young people and temporary workers, Houses of Multiple Occupancy (HMOs), Static mobile Homes and/or log cabins

3. **What are the things that you do not like and would like to get rid of or improve**

- ❖ Poor broadband
- ❖ Poor mobile network
- ❖ Road network cannot sustain heavy vehicles (farm vehicles) accept large vehicles, rural area
- ❖ Certain narrow parts of the road could be widened
- ❖ Small /slow development
- ❖ Use redundant buildings
- ❖ More units to be made available for small businesses
- Move bus shelter to bus stop to encourage more people to use the bus
- Internet car/lift sharing site
- Lydden Vale News - Free email pdf to non subscribers, better used as communication tool
- Ensure no change of use of village pub
- Improve signage – allow signs to pub/shop, other businesses
- Repair and replace and have more fingerposts
- Improve business premises – need variety of size and rent, craft workshops 200-500 square feet
- Live/work units – problems with business rates
- What size of enterprise should be encouraged/discouraged
- Allow small units automatically in existing buildings say up to 500 square feet

4. **What are the strengths and positive features of business and employment in this area?**

- Employment for local people may need more private affordable housing (occupancy controlled)
- provide services for the community
- local businesses generate local income
- May encourage younger business people and families
- improved local security
- Keep village viable and alive
- Young families will have positive impact on village school
- Importance of school 10/14 employed live within 5 mile radius
- Positive feature of the road – businesses at Court Farm, needs to be adopted
- Need affordable, low cost housing to get people here to employ
- Workers become integrated into the community eg care
- Offers alternatives, when one shrinks another opens eg technology
- Local businesses to use garage, plumbers etc
- Change of use of redundant farm buildings is very important instead of being left to deteriorate – suitable for hi-tech businesses, non industrial
- Workers use the pub and shop so would benefit if more in the village and more using the school
- Working locally reduces travel, time and carbon footprint
- ❖ Local businesses tend to be locally run and provide employment to the village
- ❖ Majority are quite small

- ❖ many local people use local services/businesses
- ✓ affordable/low cost housing for people to live and work in area poss for key workers and carers
- ✓ encourage young business people and families
- ✓ improve local security by not being a dormitory village, will be more active and vibrant
- ✓ would have positive impact on school
- ✓ ring fence school/pub/village hall and shop
- ✓ Business Directory/Lyddon Vale Nes/Website and printed too.
- ✓ Remember the 'goose that lays the golden egg'
- ✓ Beauty/focus on attractions of area, peace and views
- ✓ Heart of Thomas Hardy Country
- ✓ Footpaths and bridleways

5. What are the businesses that you value and would like to keep and encourage?

- Garage and motor services, car repairers
- Local shop and post office
- Pub (and coffee shop)
- Builders/Maintenance associated trades
- B & B, Holiday cottages
- Cabinet makers/ kitchen design
- Electrician/plumbers
- Locksmith
- Fencing
- **** need for local business directory
- School
- Farrier
- Gardeners
- Farmers
- Pet sitting and boarding
- ❖ IT
- ❖ Horticulture
- ❖ Cleaners
- ❖ Carers
- ❖ Taxi
- ❖ Thatcher
- ❖ Tea Room
- ❖ Child Care
- ❖ Leisure and Recreation
- ❖ Equestrian
- ❖ Hydro Power
- ❖ Construction
- ❖ Static Caravan Park

- ❖ Discrete Mobile Homes
- ❖ Micro Brewery
- ❖ All are valuable

6. What are the negative features of business and employment in this area?

- Effect of increased traffic
- Unsuitability of local roads, size and number of vehicles
- Noise
- Pollution/environmental impact
- Damage to tourism and AONB
- Impact on house prices
- Climate change eg increased rainfall, effects need to be addressed
- Noise
- Traffic
- Odours
-

7. What can we do to improve employment prospects in this area?

- Nursing home
- Affordable Housing
- Forestry
- Improve transport and roads
- Adopted roads for easy access to businesses
- Transport
- Mobile phone coverage
- Buildings suitable for businesses
- Simplify employment laws (national problem), benefits adjusted accordingly
- Concessionary business rates
- Reduce red tape/regulations
- Appropriate parking
- Signage
- Succession planning
- Cheaper housing e.g static caravans, flats, log cabins (these do not increase in value like other properties)
- Apprenticeships
- Expand existing businesses
- Local support for local businesses from the community
- Better public transport – to Sherborne as well as Dorchester
- Broadband and improved mobile phone coverage
- Speed up planning process
- Produce more, impact less
- ✓ Need for a variety of type and size, esp smaller end scale eg craft, dog grooming etc up to 500 square feet
- ✓ Communications – broadband, website, Lydden Vale News
- ✓ Directional signage for shop/pub/school/village hall
- ✓ Fingerposts

- ✓ Improve transportation – car share info/ matchmaking

Questions to ask businesses:-

Why they came here?

How did they come here?

Why do they stay?

Roads, Traffic and Transportation

The ranked results from the questionnaire were as follows:

Issue No	Description	Times mentioned
1	Speeding (inc agricultural traffic)	70
2	Lack of Public transport	27
3	Large vehicles in narrow lanes	23
4	Poor road maintenance (& verges)	21
5	Need pavements/footpaths	11
6	Lack of/Undisciplined parking by shop	8
7	No footpath to shop	7
8	Flooding on roads	6
9	Lack of signage/poor signage esp to beware of pedestrians	5
10	Hedges need cutting	5
11	Parking at the school	5
12	Crossroads at the school/ 4 way stop	5
13	Pedestrian safety around school	5
14	Lack of parking	4
15	Poor sight lines/lack of visibility @ road junctions	
16	Lack of concern by drivers for walkers, horses & cyclists	4
17	Duntish junction hazardous when verge overgrown	3
18	20 mph needed at school	3
19	Traffic volume increasing part. HGVs	3
20	Bus Shelter- demolish & replace with simple one in the right place	3
21	Dangerous Conditions in winter	2
22	State of road south of village esp since bank has collapsed	2
23	Extension of speed limit to top of hill at Henley	2
24	Lack of 30 mph from top Knapps hill to Duntish	2
25	Broken fingerposts	2
26	Re-route Dorchester traffic to avoid B3143	2
27	lack of speed deterrents eg pinch points, speed bumps, cameras	2
28	No bus service through Cosmore	2
29	Speed of traffic through Cosmore	2
30	Transport to doctors	1
31	Narrow roads	1
32	Restrictive speed limits	1
33	Light industrial devpt @ castle lane/Sharnill Green	1
34	Cats' eyes	1
35	Road at top Majors Common	1
36	Inconsistent speed limits	1
37	Danger of B3143 south of shop	1
38	Lack of late night trains from London	1
39	Allow private exits to have mirrors on council verges	1
40	Bridleway access	1
41	Road from Gaggle to Henley in poor repair	1
42	Affordable Housing for local families	1
43	Affordable Housing for young people	1
44	No street lighting	1
45	20 mph from Lydden meadow to shop	1
46	Many blind spots	1
47	Car emissions in narrow lanes	1
48	20 mph around church/gaggle triangle	1
49	Early delivery of goods to pub	1
50	Mirror at BN crossroads	1
51	Mirror opposite school car park	1

52	Dependence on private car - council spending always favours car users	1
53	Road to Glanvilles Wooton is being undermined by badgers	1
54	Indifference of council to support road signage	1
55	Noise of traffic	1
56	Need traffic calming through Duntish	1
57	Very little monitoring of excessive speeds	1
58	Road through Cosmore unsafe to walk to bus stop at Middlemarsh	1
59	Unsafe to drive out of driveway in Cosmore	1
60	Volume of traffic on Revels Hill/Tiley Knapp	1
61	Preservation of the rural nature of the village	1
62	Maintenance of demand for the village shop	1
63	Need to create facilities for the young	1

Good things	Description	Times mentioned
1	30 mph limits and other limits - appropriate	11
2	Road surfaces eg Knapps hill	10
3	Repairs to roads happen quickly	8
4	Rural feel (understated lighting pavements street furniture)/stars visible	7
5	Limited bus service better than nothing	6
6	Low level of traffic	4
7	Lack of street lights and therefore light pollution	4
8	Good consideration of other road users - walkers, riders/law abiding	3
9	Parking on main street	3
10	Bus service to Dorchester	3
11	Mirror facilities in awkward spots eg Knapps hill	2
12	No pavements	2
13	People helpful about transporting neighbours	2
14	Quiet at night	2
15	volunteer drivers to the surgery	2
16	Bus service	2
17	Lanes very attractive	1
18	School Bus - so that children not have to walk dark roads in winter	1
19	Better pedestrian marking by school	1
20	Good links to Sherborne & Dorchester	1
21	Mostly traffic uses C12 rather than B3143	1
22	Village gates	1
23	There are no road humps and few traffic lights	1
24	White lines on hill to C12 (Knapps Hill)	1
25	Knapps Hill/Top road improvements	1
26	Court Farm hgv track	1
27	Fixed narrow spots such as Hillings to pub	1
28	Very few cars parked on the main road	1
29	Accessible roads	1
30	Good to see police speed checks	1
31	Good sign posting	1

Other concern/solutions	Description	Times mentioned
1	Regular buses to Sherborne/Dorchester	8
2	Traffic management to slow traffic from the shop to Duntish junction	4
3	Mirror needed at school crossroads	3
4	Still some poor road surfaces and potholes	3
5	20 mph past school	2
6	Prohibit use of village lanes for large vehicles except for deliveries	2
7	Poor visibility at junction by Bridge House	2
8	Heavy rain washing stones onto roadway	2

9	road narrowing to create 'Dartmoor' type lanes to encourage low speeds/through traffic	2
10	finding alternative routes for large ag & comm. Vehicles	1
11	Obtain a mini gritter to grit minor roads that the council don't	1
12	Slippery surface of the stones on pathway leading out of churchyard	1
13	30 mph approaching BN needs to be 40, extend 30mph to Henley	1
14	Cutting of flower verges too early	1
15	Creation of bridleway/footway adjacent to road but through the field B3143	1
16	Speed camera	1
17	Painted speed limits more visible than overgrown road signs	1
18	additional parking when events at village hall	1
19	Signs at each end of village flashing 'slow down'	1
20	Hedgerows better maintained	1
21	Upgrade C12 Old Sherborne rd to shift valley traffic	1
22	Better advance warning of 30 limit from Henley	1
23	Declassify B3146 between Duntish Cross & GW, then sat navs would not find it	1
24	Tests for older drivers - some driving who should not be	1
25	Clear, large print bus timetable	1
26	Regular road sweepers	1
27	Old Dorset finger posts should be maintained	1
28	Remove road markings to help slow traffic esp Duntish to GW	1
29	20 mph past shop	1
30	Lorry ban at school time	1
31	Better parking at school at start and end of day	1
32	New businesses could create excess of heavy vehicles Volume of traffic	1
33	Village notice board for connecting people for car sharing	1
34	B3143 too narrow for lorries to pass	1
35	No footpath to shop	1
36	flooding & mud on roads	1
37	Dial- a-bus	1
38	Light pollution at night	1
39	Traffic calming through Duntish - very dangerous	1
40	Parking made available in field opposite shop	1
41	Reduce speed limit to Cosmore & extend to BN turning	1
42	Speeding in cosmore	1
43	Increase in heavy non-agricultural traffic through Cosmore	1
44	Speed humps on the B3143	1
45	20 mph limit around village centre & Duntish	1
46	need for community transport	1
47	mini round about at Buckland Cross	1

For the purposes of drawing up the Parish Plan, where issues and concerns mentioned were similar in nature, or where they were mentioned in a different section of the questionnaire, these have been amalgamated as follows:

There were 63 issues mentioned of which the 5 most frequently listed were:
responses

- | | |
|--------------------------|-----------|
| 1. Speeding | 95 |
| 2. Public transport | 53 |
| 3. Safety | 51 |
| 4. Poor road maintenance | 29 |
| 5. Pavements/footpaths | 23 |

Environment

The ranked results from the questionnaire were as follows:

Issue No	Description	Times mentioned
1	Dog fouling on recreation ground/private land	23
2	Lack of maintenance stiles/public footpaths/signs	21
3	Not enough recycling eg plastics	19
4	Litter on verges etc	17
5	fly tipping	16
6	Flooding	8
7	Rights of way remain clear - blocking & ploughing	6
8	No windfarm	6
9	Industrial/light industrial business in the parish	4
10	woodlands	3
11	Bonfires burning during the day	3
12	Overgrown roadside hedges	3
13	Tree planting with more unusual trees	3
14	Solar panels	3
15	River Pollution	3
16	Importing of building/other waste & dumping on farmland	3
17	Noise & fumes from helicopter operating in village	3
18	Lack of renewable energy	2
19	Listed buildings / not being altered in keeping	2
20	Conservation - wild life	2
21	Landowners not clearing hedge clipping - blocked drains burst tyres	2
22	New build to be in keeping eg colours of Lydden Meadow	2
23	Not enough care to native trees in farmland	2
24	Horse droppings on roads- slippery for bikes	2
25	Dogs wandering freely	2
26	Ancient monument protection	1
27	Poor maintenance of roads	1
28	Parking outside village shop	1
29	Trespass - rights of way/agricultural land	1
30	Entrance to village from the south	1
31	Verge cutting too early	1
32	Dustmen leaving litter	1
33	Stabilisation of banks by B3143 betweeb BN & Henley	1
34	Control of water after heavy rain	1
35	Noisy vehicles (excluding farm vehicles)	1
36	Industrial units at Brockhampton too large	1
37	Improve look of village with better entrance upkeep	1
38	Maintain recreation area	1
39	Fast tractors & trailers	1
40	Landslides due to lack of trees & poor maintenance	1
41	Woods not managed and overgrown	1
42	Building & Development encroaching into green areas	1
43	That village keeps its character & not changed too quickly	1
44	Industrial noise	1
45	Off road motorcycling and the noise caused	1
46	Domestic Renewable energy	1
47	Conversion of bridal path to roadway without planning permission & abuse of AONB	1
48	Roadside bins not always emptied on regular basis	1
49	Hedges thinning and trees dying	1
50	Lack of support for renewable energy	1
51	Depositing of 'doggy bags' in hedges	1
52	System of management of village field, too much mowing	1

	squandering wild flower rich grassland habitat and very little sport played	
53	Solar panels should blend in with roof	1
54	Dogs	1
55	Hilling lane road surface	1
56	Stones/gravel on B3143 after heavy rain	1
57	Over dependence on imported energy use	1
58	Overhead power cables laid underground	1
59	Lack of amenities for the young eg tennis court	1
60	Increasing light pollution	1
61	Risk of urbanisation	1
62	Heavy Industrial/Farm traffic in village	1

Good things	Description	Times mentioned
1	Public rights of way	21
2	Rural landscape	17
3	Good community spirit and pride in the village	7
4	Maintenance of rural setting, village life AONB	7
5	Peaceful environment	6
6	Recycle bins & bags	6
7	Playground	6
8	No street lighting/low light pollution	6
9	Allotments	5
10	People keep their own environment clear - clean & tidy	5
11	Air quality	4
12	Open spaces & access	4
13	Listed buildings	4
14	Diverse flora & fauna	3
15	Parish council good on preserving peace & beauty	3
16	No windfarms/unsightly renewable energy projects	3
17	Trees/Woodland Trust	3
18	Woodlands	3
19	Litter/fly tipping not a problem	3
20	Active parish council and provision of open space	2
21	Great place to live	2
22	Different styles of buildings etc/Quality of architecture	2
23	Green spaces	2
24	People kind enough to litter pick	2
25	New housing has been carefully considered	2
26	Woodlands & well farmed land	2
27	Stunning views	2
28	Excellent maintenance of cemetery - last ancient grassland habitat in village	2
29	Hedges	2
30	Sign posting	1
31	Control over development	1
32	No excessive traffic	1
33	Good dog walks	1
34	Well maintained ponds and variety of hedges	1
35	Not busy- village not 'picture postcard' therefore not many visitors	1
36	Regular rubbish collection	1
37	Grass verges kept trimmed	1
38	Blend of old and new	1
39	spread out housing	1
40	Quiet at night	1
41	Farmers who endeavour to survive current economics	1
42	Size of village- we do not want to enlarge it too much	1
43	Presence of warning signs about cattle on field gates	1
44	No 'eyesores'	1
45	All alright	1
46	Pam Lewis & Fizz Lewis' wildflower meadows	1

47	Idea of Lydden Meadow - not so good in practice	1
48	Solar Panels	1
49	Village shop	1
50	Mostly not concreted over, therefore redeemable	1
51	Tree planting on parish field	1
52	Very little pollution	1
53	WDDC pick up fly tipping very quickly when contacted	1
54	No pylons - great	1
55	Village hall	1

Other concern/solutions	Description	Times mentioned
1	Village tree planting scheme	3
2	Recycling bins sited at village hall	2
3	Dog bins needed in other parts of village (eg church end)	2
4	Volunteers to clear rubbish, drains etc	2
5	Low flying helicopters/aircraft - some late at night carry out tests at sea	2
6	group purchase of energy by village	2
7	Too many owners blocking up rights of way	2
8	Pollution of Lydden stream	2
9	More environmental awareness	2
10	More effective local environment agency	2
11	Lack of maintenance to drainage- clear gulleys etc	1
12	New bus shelter needed	1
13	People may build in gardens and spoil the look of the village as a whole	1
14	New buildings should maximise use of permeable surfaces to reduce runoff effect	1
15	Need to actively minimise light pollution	1
16	Posters not taken down after event	1
17	Houses permanently unoccupied	1
18	Tractors after 11 pm	1
19	Solar Panels becoming a real eyesore	1
20	New govt planning framework create local tensions, need a moderating process to facilitate gracious & purposeful change	1
21	Planning development to take account of climate change/drainage	1
22	overall the Parish have the right balance	1
23	Provide better footpath signage with directions & distances	1
24	No windfarms blighting countryside	1
25	Poor maintenance of footpaths/bridleways	1
26	General lack of interest in maintaining quality of countryside SEP	1
27	Parish council should investigate <u>all</u> planning applications	1
28	Cycling clubs using bridleways	1
29	Village recycling centre	1
30	Community renewable energy production	1
31	Poor drainage leading to flooding	1
32	Follow the cemetery's example for the church yard	1
33	Poor management of verges, playing field and church - need more wild flowers	1
34	Educate children to maintain a clean, litter-free environment	1
35	Local garden/organics waste tip to save wasteful unecological journey	1
36	Need plastic bottle bank	1
37	Need public nature reserve	1
38	Replace poor agricultural land with agri-forestry for timber/wood/fruit/nuts	1
39	Replace current unsustainable agricultural practices with small scale organic/permaculture	1
40	Parish find a p/t person to maintain general village environment	1
41	Plastic planters are suburban & out of place- use locally made	1

	wooden gates if entrance needed	
42	New saplings should be marked in hedges to avoid them when hedges cut	1
43	Local walks maps to be produced and made available	1
44	Noise from business in the old wood yard	1
45	all layby to have signs 'Take your litter home'	1

Discussion meeting in the Built and Rural Environment - 25/10/12

Around 27-28 people attended this meeting and formed four discussion groups. The meeting was opened by Lesley Docksey, who welcomed Jennifer Clarke, the Dorset Area of Outstanding Natural Beauty (AONB) Landscape Officer. Jennifer gave a short and useful summary of what the AONB is and how it is maintained:

The Dorset AONB was designated in 1959 and covers 42% of the county. It has a wide variety of landscapes and is home to internationally significant wildlife. It has a long geological history (the Jurassic Coast), many prehistoric earthworks and monuments, and a rich cultural history which still inspires artists. It is also one of the most heavily populated AONBs.

Jennifer then outlined the various ways in which local authorities have a statutory duty to regard the conservation and enhancement of natural beauty when making decisions. They also have to produce a Management Plan for their area. The AONB Partnership plays a key role in the delivery of this Plan, and partnership members include the NFU, the National Trust, English Heritage and Natural England.

The AONB team consists of 8 members, each with a different responsibility, and they are involved in various projects, some of which are relevant to our community.

Traffic in Villages – a tool kit which helps communities to understand and solve traffic issues. (Their public access and transport officer Sue Mitchell has already contacted me and is willing to come and discuss our problems with speeding.)

Dorset Fingerpost Project - Sue is also involved in this. The fingerposts are an important and unique feature of Dorset and the aim, having mapped and surveyed the condition of every fingerpost in the AONB is, working with local authorities and community groups, to find cost-effective ways of restoring them.

Planning Protocol – this is Jennifer's task, working with local authorities to ensure that policies and proposals do not have a significant negative impact upon the AONB.

Land Character Assessment – this helps the team to identify what makes our landscape special, so that any proposed change does not harm those qualities. They are also involved in **Land management and Local Food**.

Finally, she told us about the **Sustainable Development Fund**, managed by Katharine Wright. This fund has helped many small community projects, and although funding availability is under pressure, this is something we should look at. Several ideas come to mind that would make suitable projects, and we should get in touch with Katharine to discuss how best to formulate them. She will be accepting applications in February. Jennifer gave us copies of the AONB Management Plan 2009-2014 (which will be available to anyone who wants to consult it), and two AONB publications, Traffic in Villages and a booklet about the Dorset AONB Sustainable Development Fund, both of which we could make good use of.

Following various questions about the AONB, including concerns about wind turbines, Stephen White asked whether we could get National Park status for the West Dorset AONB, as had the Sussex Downs. It would mean more funding would be available but – it would take an enormous amount of work and lobbying.

Lesley gave a short presentation on the very long history of Buckland Newton, stressing that we cannot separate the 'green' from the 'built' environment. 'Environment' simply means 'surroundings' and that includes everything – the natural surroundings, the buildings, roads, activities with their resulting noise, smell, traffic etc. result in a Living Environment.

This area has been occupied since Neolithic times, and there are traces to be seen in our landscape. The spread out nature of our community can be traced back to early Norman times. The Domesday Book records that there were three separate landholders here and each would have had its own cluster of dwellings forming hamlets. 100 years later there was a fourth hamlet, somewhere at Knoll, but all traces of this have disappeared. Unlike other villages with a defined centre or a High Street where many old houses are to be found side by side, Buckland Newton only has a few scattered about the parish. One answer as to why this is can be found in the Domesday Book, where it says that Buckland has pasture land amounting to about 3-4 miles long by $\frac{3}{4}$ mile wide, with 'woodland, as much'. With so much wood available, almost all early houses would necessarily have been of wooden construction, and as such would not have lasted. (Someone commented afterwards that much of our woodland could have been felled during WWI. But the 1899 map shows there was no more woodland then than there is now.) Even later cottages have disappeared, those down Rue Lane being an example.

Like most villages, ours has developed slowly over the centuries, with each built change having time to fit in and become part of the whole. It is only in the last 60 years or so that the rate of change has increased. If we want to remain as a village that fits so well within the landscape, we need to maintain the slow growth that allows change to be easily accommodated. And we must always remember, when planning for the future, how ancient our environment is.

People were then asked to discuss some of the following questions, which were designed to get them to think of our parish in the round, rather than to just focus on housing, traffic or other isolated concerns:

1. We live in an Area of Outstanding Natural Beauty

What are the benefits of a beautiful view? What value does it add to our community, our lives and our health? Do you think its preservation and protection is important? Because of the spread-out nature of Buckland Newton, there are many green spaces between groups of buildings. Do you think these green spaces add to the individual character of the village?

2. People and Place

How much is the structure of the village (i.e. no obvious centre, with satellite hamlets) a factor in giving Buckland Newton its character? Is it the people and the way they contribute to village life that makes the village successful? How important is the village's structure in this respect? Would a more defined and enhanced centre be an improvement? Where and what form could that take?

3. Noise – Church bells or Chainsaws

Noise can affect us all - how loud - how often - where from? What level and type of noise is tolerable in a rural community? What do you like hearing? What grates on your ears? And how important are those moments of total quiet? Do you think about the noise you make and how it might affect your neighbours?

4. Mobility – Tracks and Traffic

Do you use the many footpaths and bridleways in the area? Do you value your access to them? Do you think of them as one of our assets? Should they be protected from off-road vehicle use? We all use cars, we help create traffic. Do the levels of traffic on narrow

village lanes worry you? How many vehicles? How frequent? How big? How much more traffic could the community accept? Could we cut down on our own traffic by making our roads more 'walker-friendly'?

5. Odours – from honeysuckle to muckspreading

What smells do you associate with the countryside? What smells do you notice? What smells do you appreciate? Do you readily accept some odours as being part of farming? Do you value our clean country air? Or take it for granted? Do you notice the difference between burning garden rubbish and burning rubber or plastic?

6. Wildlife, Waste and Water

How big a part do you think wildlife plays in our surroundings? Would you miss it if it disappeared? How much would you miss it, and why? Do you feel some forms of wildlife add more to our surroundings than others? What do you feel about the dumping of waste (such as fly tipping) where it can pollute the land and affect wildlife? Do you worry about our streams becoming polluted from waste and chemical run-off?

7. Buildings and what they're made of

Apart from buildings used for farming, what building materials best fit your picture of our community? What do you think blends in best with our surroundings? Would you accept eco-buildings made from materials such as straw bales? Houses used to contain 3 or 4 generations of a family. Could you live like that now? Are you happy with the sight of solar panels on roofs, knowing it helps create renewable energy?

For each question people were also asked to consider how they thought their views and actions affected what's best for future generations?

The groups were very much in agreement over the different subjects and a summary follows. It was very clear that we really value where we live in all its aspects. Please note: none of the groups addressed all the questions. And I have added some comments in italics.

1) The benefits of a good view. This provoked a lot of positive comments. We're surrounded by good views; they are what qualify this area to be part of the AONB. A good view makes you smile, promotes health and general well being, brings peace and calm and relieves stress. It's relaxing and meditative, good to come home to. But it is also good for business and is an important part of tourism. People 'vote with their feet', they want to come here, to both visit (supporting the holiday and B&B businesses in the parish) and live in our community. Everyone was agreed that the preservation and protection of our views were vital. They also agreed that the green spaces between groups of buildings were important, add to the character of the village and help to break up the vistas.

Buildings are also part of the view along with the woods and the hills, but are often hidden from sight, helping to maintain the feeling of a rural community.

On the slightly negative side, although it was noted that the views add to the value of our houses, this does sometimes stop people from buying! And it was felt that a lot of villagers don't venture out and enjoy our environment by exploring all our rights of way. (*Does anyone have any ideas as to how these people can be encouraged to explore?*)

2) People and place. People thought that the structure of our community, with no obvious centre and satellite hamlets, worked in our favour and made our community distinctive. It stopped Buckland Newton from being 'a chocolate-box village' so we don't suffer from excessive day visitors and traffic. All parts of Buckland Newton have equal importance. The benefits of not having a defined centre mean that we can avoid such things as street lighting. And development can be spread out; one or two new houses in the different hamlets rather than all in the main village would lessen the impact. One group stressed that it is the people and the community spirit which make Buckland Newton successful, although more young volunteers are needed. It was noted that it is up to us to make an

effort to support the community – ‘you have to give into the village to get anything out.’ For instance, helping the pub to be a success will make it a social centre, encourage mixing through darts, skittles and meetings.

The main village can be said to have three ‘centres’ – the church, the pub and the stretch of road from the school to the shop. This is not as pedestrian-friendly as a village where all these things are close together. And that is not so good for elderly or disabled residents. But even so, we like the way we are, and no one thought we should have a defined centre.

3) Noise - church bells or chainsaws. It was clear that some noises are not welcome! Occasional noise is okay, but persistent noise is not. Unexpected noise or noise at unsociable hours was felt to be obtrusive and inconsiderate. Early morning deliveries at the shop (before 7:00 am) were not liked. Other unpopular noises included: builders working to music, industrial noise, helicopters. If you are informed of noise about to happen (such as a late party next door) it becomes more tolerable – so being considerate makes a lot of difference. It was pointed out that the brain can become used to necessary noise. All sounds linked to agriculture are acceptable as is something like lawn mowing. So are the noises made by birds – except for rooks and crows! Moments of absolute quiet were said to be ‘essential, and ‘wonderful’. Some people loved church bells and birdsong and the sound of horses going by. One positive point was made – that because the houses are spread out, so is the noise coming from them. But generally it was clear that while most people try to consider their neighbours, we could all do with a little more consideration.

4) Mobility – tracks and traffic. Most people used the footpaths and bridlepaths, for walking, riding, work and taking the dogs out. But it was felt that the footpaths are under-used, and some are more accessible than others. They are valued, reduce traffic and it is safer for pedestrians to walk about the village using the footpaths. They are a valuable asset, something other countries don’t have. And all agreed they should be protected from off-road vehicle use (the dreaded BOATs – Byways Open to All Traffic).

Regarding traffic, it was more the speed and size rather than the number of vehicles that was a concern. But some felt that pedestrians, dog walkers and riders should also bear responsibility – wearing visible clothing, carrying a torch at night and walking towards oncoming traffic. (*And can I make a personal plea here to dog walkers: please walk between your dog and the traffic so that it can’t run out in front of vehicles.*)

The amount of vehicles was unquantifiable, and it appears that much of the traffic is through-traffic, not local. (*Perhaps we should do a study on this?*) A ban on lorries using village roads was suggested. Another problem is that, because of the classification of roads, SatNavs direct drivers onto unsuitable minor roads. Most felt that our roads could be more ‘walker-friendly’, but no one wanted pavements (looks urban) or traffic calming by sleeping policemen. And chicanes could create more noise because of gear changes. But if roads were more walker-friendly and rights of way more family-friendly, it would encourage families to stay in the village.

Visibility mirrors are essential on difficult junctions. A final comment was that footpaths should be more accessible for walking dogs.

(*Note: the AONB booklet on village traffic solutions that Jennifer Clarke left with us is full of ideas we can use to help slow vehicles down.*)

5) Odour – from honeysuckle to muckspreading. Only one group tackled this question. Smells associated with the countryside included cut grass, cow muck, silage, fresh air, coffee and fresh bread, chickens and pigs, dead animals, wood smoke and flowers. They were all equally noticeable and it was felt that they were all part of the rich matrix of living in the country. Agricultural smells are readily accepted as part of country living, and the clean air is valued. The group felt that the smell from burning plastic or rubber, easily

distinguishable from ordinary bonfires, mostly came from domestic premises, rather than commercial or farming premises.

In comments following the reporting of these conclusions, a point was made that rubber and plastic produce black smoke as well as an offensive smell, and as such should be reported to the District Council. And it was suggested that the village had a community bio-digester.

6) Wildlife, waste and water. Again, only one group tackled this question. The wildlife is absolutely integral to our environment, and it is very rich (more than 60 varieties of moth were counted in Dominey's garden and the Carder bee has been seen in Duntish). If we lost any part of the wildlife, we would starve without it – our food is part of the whole web – everything interweaves. The range of habitat is very important and so are all the different forms of wildlife – although rabbits aren't so popular!

Tipping waste anywhere is wrong, and it was thought that the charges Council tips make was part of the problem. There was some discussion about Lanscombe and Gypsy Lanes being used for tipping, and an idea was put forward- that every so often a communal skip should be provided (perhaps parked in the village hall car park) for villagers to dispose of their rubbish.

And keeping our streams clear of 'run-off' is a worry, whether from roads or other sources. Buffer zones could help.

And a suggestion that came up after reporting these results had to do with the landslips into the road up at Henley Common after the recent heavy rain: many hedges are missing their trees and it was the tree roots that helped to keep the banks stable. Perhaps we could do some replanting?

7) Buildings and what they are made of. Everyone agreed that traditional materials were the choice for what fits our picture of the village and what best blends in with our surroundings: clay, cob, flint, stone, clunch, brick, lime render and mortar, timber, thatch, tiles and slate. But what was chosen also depended on the site, its setting within the community and the landscape. There should be no 'grand designs'. New houses should retain the character of the village by being built in traditional materials.

The question on eco-houses produced varying responses. One group had no problem with them if they were privately funded (presumably meaning they did not want to see them used for affordable housing). Another group approved, provided they were proven to be sustainable and practical. (*It is worth emphasising here that true eco-houses are only built from sustainable and renewable building materials.*) The third group approved of sympathetically built houses, but these would only be acceptable if adequate research had been done. Mould and mites in straw bales were cited as a problem. (*This is not something I have come across and the Ecology Building Society, which supports and offers funding for straw bale buildings, has never mentioned it in its reports.*)

Having more than two generations under one roof was seen as a problem and potentially stressful. Nor is it always practical, unless the house is large enough and can accommodate the needs of the different generations. One group thought that if it was possible, we should be able to encourage it. And they added the comment that older residents need to be able to downsize, allowing families to move into their larger houses. Visually the design of solar panels was generally considered to be a problem – people don't like them and would prefer them to be placed where they are not visible. One comment was, 'Could they not be designed to fit in with the roofing material?' And one group noted that, as we are within the AONB, solar panels should be part of the planning process.

And the final comment, with future generations in mind: houses should be built to last a long time.

Just for fun, all the groups were asked to list their favourite places in Buckland Newton, and the list was very long and comprehensive! All the groups then reported on their findings and there was further discussion. I have tried to include any comments/suggestions made then in the summary above.

Lesley Docksey

For the purposes of drawing up the Parish Plan, where issues and concerns mentioned were similar in nature, or where they were mentioned in a different section of the questionnaire, these have been amalgamated as follows:

There were 62 issues mentioned of which the 5 most frequently listed were:

	responses
1. Litter and fly tipping	35
2. Rights of way, lack of maintenance, blocked paths etc.	35
3. Dogs, most particularly dog fouling	27
4. Not enough recycling and lack of recycling facilities	20
5. Flooding (including blocked drains, ditches etc.)	11

Community Facilities and Services

The ranked results from the questionnaire were as follows:

Issue No.	Description	Times mentioned
1	Mobile Signal	48
2	Bus shelter	30
3	Internet speed	28
4	Improve toilets at parish rooms	27
5	viability of Pub	18
6	Viability of shop	9
7	TV reception	8
8	Sports Facilities	4
9	More post office opening hours	4
10	viability/reliability of post office	3
11	Use of some of the school sports facilities after hours	2
12	No need for toilets	2
13	Loss of school	2
14	Improve pub - sympathetic refurbishment inc externals	2
15	Signposts	2
16	Village hall to be let to outside organisations to raise money for improvements	2
17	Website should be more dynamic/inclusive/foster the community	2
18	Toilets installed in the church	2
19	Pub reverts to being village pub with local activities eg skittles etc	2
20	Village Hall generate more income and not be a cost	1
21	Hege cutting & maintenance of play area	1
22	upgrade village hall for business meetings	1
23	Improve variety of activities at Village hall	1
24	Gaggle being used for non-pub purposes	1
25	Parking outside of school at end of the day	1
26	Clubs & Societies	1
27	Upgrade parish rooms	1
28	Pub could be more child friendly	1
29	Children picked up outside bustop not residential houses	1
30	People willing to volunteer to develop our community	1
31	Toilets that are not locked	1
32	Parking for parish field	1
33	Banks failing to support businesses after ruining economy	1
34	No DAB radio signal	1
35	Community magazine has no local news about residents, ie births, deaths etc	1
36	A bench at Major's common bus stop	1
37	sports pavilion on the playing field	1
38	Promotion of BN as a tourist base	1
39	Promotion of village hall as a venue for hire	1
40	Potholes	1
41	Verges at junctions	1
42	Local TV news not available from Mendip transmitter	1
43	Parish field maintenance	1
44	Shop no longer offering organic produce	1
45	Bettter communication - LVN boring!	1
46	Pub food early for children	1
47	Tennis courts	1
48	Dustbin lorry drops rubbish onto the road	1
49	Parish field given over to sport that is v rarely played	1
50	village shop too limited to rely on	1
51	Too much money & maintenance of Parish field for Cricket club who do not play at home very much	1

52	People putting commercial waste in the residential collection	1
53	Lack of shop & post office at short notice	1
54	Facilities/clubs for children/teens	1

Good things	Description	Times mentioned
1	Village shop	75
2	Good village hall	50
3	Play area and Parish field	36
4	Village pub	32
5	School	19
6	Church	16
7	social/community atmosphere & neighbourliness	10
8	Post office	10
9	Variety of societies/events	9
10	Village Cafe	7
11	Lydden Vale news	5
12	Lunch club	5
13	Artsreach	3
14	Affordable Housing	2
15	Allotments	2
16	Youth club	2
17	Friends of practice voluntary drivers scheme	2
18	Inclusive to all	1
19	Website	1
20	Mobile library	1
21	volunteers that keep things going	1
22	Playgroup	1
23	Open spaces	1
24	Footpaths	1
25	Good choice of venues for meetings & events	1
26	Good range of facilities	1
27	Bellringing	1
28	Tidiness of the village	1
29	Delivery service from shop	1
30	Buses	1
31	Prescription delivery to shop	1

New facilities	Description	Times mentioned
1	Community Transport	29
2	More frequent buses inc evening service	9
3	Full time post office/more conv opening hours	8
4	Faster internet - 'infinity'	5
5	Tennis court & club facilities for all ages/all community	5
6	Sugery/doctors outreach centre	4
7	Return of 'Cinema night' at village hall	3
8	Decent village toilet that is maintained and cleaned	3
9	Services for elderly	2
10	Local trades & services list	2
11	A welcome return to a community minded publican at the Gaggle	2
12	Road past shop to be gated halfway to slow down traffic/chicanes	2
13	More benches	2
14	More use of village hall	2
15	Local TV via Mendip transmitter	2
16	Renovations to pub/restaurant	1
17	More educational talks	1
18	More & varied clubs/societies	1
19	Reinstate Hountwell Pump	1
20	Assisted housing for older residents	1
21	Better care & maintenance of roads & hedegrows	1

22	Erection of street/road names	1
23	Better recycling facilities	1
24	Transport system <u>not necessary</u>	1
25	Mobile library - date & time of visits in LVN	1
26	Swimming Pool	1
27	Member of Parliament surgery once or twice a year	1
28	sports pavilion on the playing field	1
29	Improved mobile reception	1
30	Improved parking to encourage tourism & use of facilities e.g. Shop	1
31	Locals board at shop - for transport issues etc	1
32	Film bank at village hall	1
33	Community woodland	1
34	Village map & Information board	1
35	Toilets in the church	1
36	Pavements on the B3143	1
37	20mph speed limit in Henley	1
38	Community orchard/woodland on part of Parish field	1
39	Tennis court	1
40	Suggestion box outside a communal area	1
41	Boules pitches	1

Solutions	Description	Times mentioned
1	Transportation and shopping for elderly & needy (akin to 'friends of practice')	3
2	Small Village bus to Sherborne & Dorchester	3
3	Using village facilities to raise funds for their own and the good of the village	2
4	Younger generation taking on more voluntary work	1
5	Visitor scheme for elderly/lonely people	1
6	Raising money to facilitate needs	1
7	No concerns- everything low profile and not busy	1
8	BNCPT will generate significant funds - build upon this valuable asset	1
9	Upgrades to village newsletter and website	1
10	TV/Phone repeater above village	1
11	Local fresh produce market	1
12	More sporting facilities on playing field	1
13	Promise from planning authorities with regard to pub	1
14	Campaign to improve phone & radio signals	1
15	Include local news via internet	1
16	Banning HGVs from centre of village/lanes	1
17	A village lottery to raise funds for things like community bus	1
18	Upgrade and use of school's sports facilities out of hours	1
19	Volunteer network co-ordinator (connect volunteers with projects)	1
20	Mirror on crossroads of Fordown Lane/Hillings Lane	1
21	Dog fouling signs	1
22	Signposts to Henley	1
23	Right to roam	1
24	Persuade BNPC to relinquish power over the Parish field & managed creatively by seperate committee	1
25	Use increased precept to fund BNVH & parish field outfit	1
26	survey by shop to see what people want/need to tailor stock	1
27	Mobile companies to investigate improved reception	1
28	Resite/combine bus shelter and parish toilets	1
29	Provision by community to cover shop when owners away	1

For notes on Discussion meeting held on the 13th October 2012, please refer to end of Health and Social Care Section

For the purposes of drawing up the Parish Plan, where issues and concerns mentioned were similar in nature, or where they were mentioned in a different section of the questionnaire, these have been amalgamated as follows:

There were 54 issues mentioned of which the 5 most frequently listed were:

	responses
1. Mobile signal	48
2. Bus shelter	30
3. Viability of shop / pub / post office	30
4. Internet speed	28
5. Improve toilets at Parish Room	27

Young People's Interests

The ranked results from the questionnaire were as follows:

Issue No.	Description	Times mentioned
1	Lack of transport	11
2	More sport for the young - eg tennis court	10
3	More Involvement in village activities	6
4	Lack of variety in activities	4
5	No public transport to Sherborne	4
6	Nothing much to do	3
7	Youth Group	3
8	Road safety/traffic speed	3
9	Keep school going	3
10	No National institutions eg Scouts, Guides etc	2
11	Communal coffee facility	1
12	Under utilisation of play areas	1
13	Not many facilities	1
14	Encourage more families to live in the village to keep school numbers up	1
15	Loss of local youth due to unemployment or housing	1
16	Litter	1
17	A Youth Cricket team	1
18	No regular facility for socialising/activities since pub got rid of seating/games	1
19	Few local employment opportunities (part or full time)	1
20	Playground needs vegetation control	1
21	Poor mobile reception	1
22	Cycle locking facilities	1
23	Petty Crime	1
24	More Serious Crimes	1
25	Feeling safe to walk around the village	1

Good things	Description	Times mentioned
1	Youth Group	42
2	Open spaces/playing fields	24
3	School & pre-school	15
4	Playgroup fantastic	4
5	Family service at church	3
6	Safe environment	2
7	Local adults doing their best to care for young people's welfare	2
8	Church activities	2
9	sport	2
10	School children singing to entertain older people	1
11	Shop (sweets etc)	1
12	The young play an active role	1
13	Solid support	1
14	Youth Moves	1
15	Plenty of clubs	1
16	Lots of helpers at school	1
17	Annual Pantomime	1
18	Monetary support given by village to Youth club	1
19	Business actively employing local young people	1
20	Dance group	1

Other facilities	Description	Times mentioned
1	Tennis court	5
2	What the young people want and are prepared to work for & support	3
3	Youth football league	3
4	Establish more village teams from skittles & cricket involving all age groups	3
5	Skate park	2
6	Swimming Pool	2
7	Tesco express/small co-op	1
8	Garage	1
9	Fish & Chip shop	1
10	Upgrade Parish room to Pavilion to encourage use of playing field	1
11	Adventure trail	1
12	Young people's choir/music group	1
13	Local employers giving work experience to local children	1
14	Something for the 'inbetweeners' (Youth club & pub) eg coffee shop	1
15	Small library for everyone	1
16	More bicycle storage/bicycle lanes	1
17	village band/music club	1
18	More things going on for the younger people	1
19	Traffic calming measures on B3143	1
20	Parking by village shop	1
21	Local businesses offering jobs/apprenticeships/work exp for young people	1
22	More sports facilities eg basketball/tennis/mini skate park	1
23	More age appropriate park activities eg mini assault course	1
24	Youth club take a more active role in village eg litter pick, gardening in community facilities	1
25	Right to roam	1
26	Parish field broken into mosaic smaller child/friendly areas- more fun to play in	1
27	Cubs/scouts/brownies/guides	1

For the purposes of drawing up the Parish Plan, where issues and concerns mentioned were similar in nature, or where they were mentioned in a different section of the questionnaire, these have been amalgamated as follows:

There were 25 issues mentioned of which the 5 most frequently listed were:

	responses
1. Lack of transport	15
2. Nothing much to do / lack of variety / no Scouts/Guides	13
3. More sport for the young, eg tennis court	10
4. More involvement in village activities	6
5. Safety / crime	6

Crime and Safety

The ranked results from the questionnaire were as follows:

Issue No.	Description	Times mentioned
1	No Police presence	22
2	Neighbourhood watch not in evidence	12
3	speeding - danger for walkers	11
4	Burglary	7
5	Antisocial behaviour	5
6	Outbuilding thefts	4
7	Inconsiderate driving through valley	4
8	fly tipping	3
9	Distance and therefore response time for emergency calls	2
10	Stealing of oil from tanks	2
11	Everybody should be involved	1
12	No police local knowledge to deal with crime	1
13	Better communication eg website LVN	1
14	Unused buildings seized for housing assoc use with problem families reloc here	1
15	Trespass on private/agricultural land	1
16	Road at top of Majors common	1
17	Police indifference to crime	1
18	Damage to car & property	1
19	Petty crime	1
20	More serious crimes	1
21	Feeling safe to walk around village	1
22	Unseen criminal activity due to remoteness	1
23	Doorstep sales- potential burglaries	1
24	Police following up phone calls	1
25	Unleashed dogs that attack pedestrians	1
26	School lights at night	1
27	Police to make themselves known	1
28	Inconsiderate parking	1
29	Loud Music	1
30	V wide tractors speeding through the village	1
31	Dangerous driving by post van	1
32	Vehicle emissions/pollution	1
33	Lack of traffic enforcement	1
34	Icy roads in winter at bottom of Revels Hill	1
35	No speed monitors in Cosmore	1

Good things	Description	Times mentioned
1	Very rare incidents	20
2	General community spirit and look out for problems	19
3	Sense of safety	12
4	Neighbourhood watch/rural watch	10
5	Visual presence of community Police Officer	5
6	Good overall - adequate	4
7	good Police communication	2
8	No anti-social behaviour	2
9	No street lights	2
10	Low level of domestic crime/burglary	2
11	police follow up of reported incidents	2
12	Little evidence of dog fouling	1
13	PCSO involvement at school	1
14	Good relationship with local police	1
15	Police community support	1

Other concerns/ possible solutions	Description	Times mentioned
1	Regular police presence, better clear-up rate	4
2	Relaunch Neighbourhood watch scheme to increase info	4
3	Communication to more of the community	3
4	No traveller sites	1
5	Improve police response time to petty theft	1
6	Random visits by Police	1
7	Tractors should have width & speed restriction	1
8	Enforce speed limits/engineer roads to reduce use	1
9	ensure wealth gap is narrowed	1
10	legalize controlled drugs to reduce drug crime	1

For the purposes of drawing up the Parish Plan, where issues and concerns mentioned were similar in nature, or where they were mentioned in a different section of the questionnaire, these have been amalgamated as follows:

There were 35 issues mentioned of which the 5 most frequently listed were:

	responses
1. No Police presence / Police indifference	26
2. Speeding / inconsiderate driving	19
3. Crime	18
4. Neighbourhood Watch not in evidence	12
5. Anti-social behaviour	10

Health and Social Care

The ranked results from the questionnaire were as follows:

Issue No.	Description	Times mentioned
1	Poor access to surgery for non drivers	14
2	No doctors or dentists surgery/veterinary provision	8
3	Distance to health facilities(inc opticians, dental etc)	6
4	Care in the Community/ need for carers	4
5	Response to emergencies	3
6	Cost of care in old person's own home	2
7	Inadequate foot-care at surgery	2
8	Lack of info about facilities when ill (eg counselling, hospice etc)	2
9	More affordable housing for older people too	1
10	Home visits out of hours	1
11	Transport to hospital	1
12	transport when older	1
13	CA surgery not cope with more population	1
14	Availability of local hospital with health organisation changes	1
15	My health	1
16	Lack of road/lane names so that emergency vehicles have problems	1
17	difficulty of organising home visits for dentistry/optometry,podiatry,chiroprody	1
18	Icy roads in winter	1
19	Lack of people in the village who are available	1
20	Poor doctor's service at weekends	1
21	No surgery on Saturday morning	1
22	Poor treatment at A&E	1
23	social care not needed	1
24	Appointment booking at surgery	1
25	Outreach surgery from Cerne Abbas	1
26	Retention of air ambulance	1
27	Retention of Portland Coast Guard facilities	1
28	Destruction of the Health Service	1
29	Adequate	1
30	Trespass on private land	1
31	dog fouling on private land	1
32	Invasion of privacy by trespassers	1

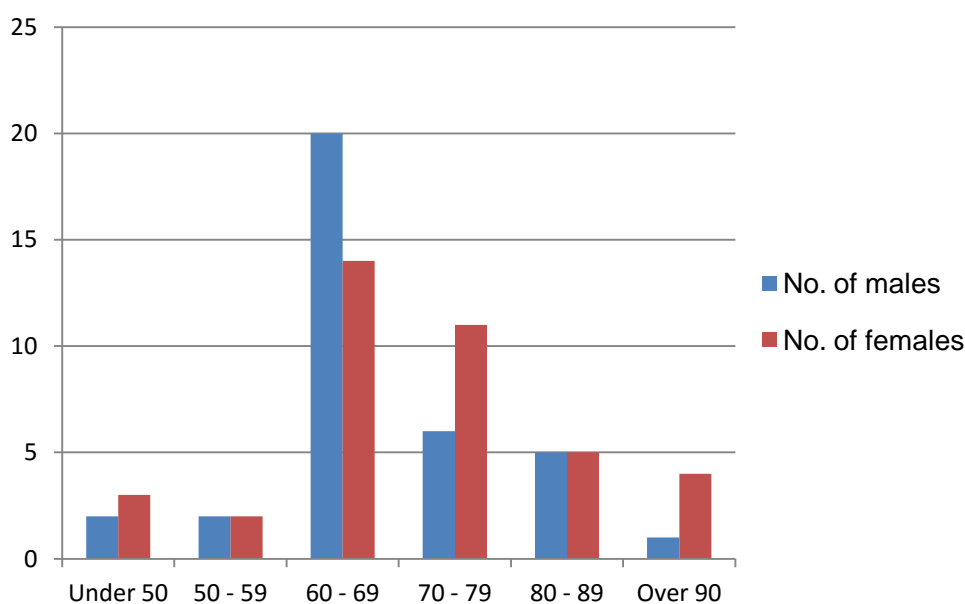
Good things	Description	Times mentioned
1	Cerne Abbas Surgery	31
2	Delivery of medicines to shop	24
3	Friends of Practice' transport scheme	10
4	Neighbours helping each other	10
5	Very Good	7
6	Apex care visiting	2
7	Cerne surgery at Hazelbury	2
8	Excellent response from emergency services	2
9	Shop	1
10	Lunch club & other societies good for socialising	1
11	Adequate care to allow elderly people to stay in their own home	1
12	Hospital transport	1
13	District nurse & enablement team very helpful	1
14	Good surgery nurses	1
15	Good network of social care based around village hall	1
16	Pub could be potentially good	1
17	Dorset Air Ambulance - wonderful	1

18	Good out of hours medical service	1
19	Ability to collect medicines from surgery	1
20	Good Community Health team	1
21	Acces to open countryside	1
22	Low noise pollution	1
23	Uncrowded environment	1
24	Realtively clean air	1

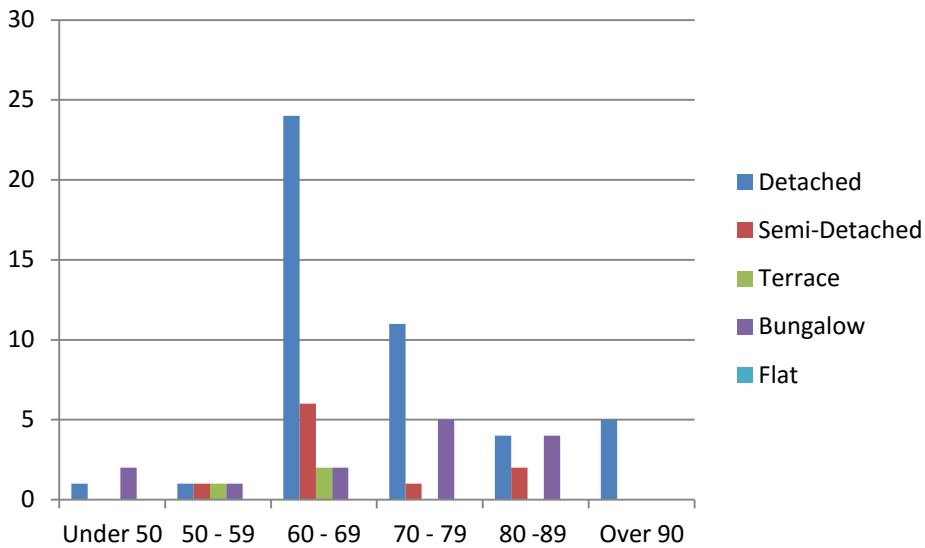
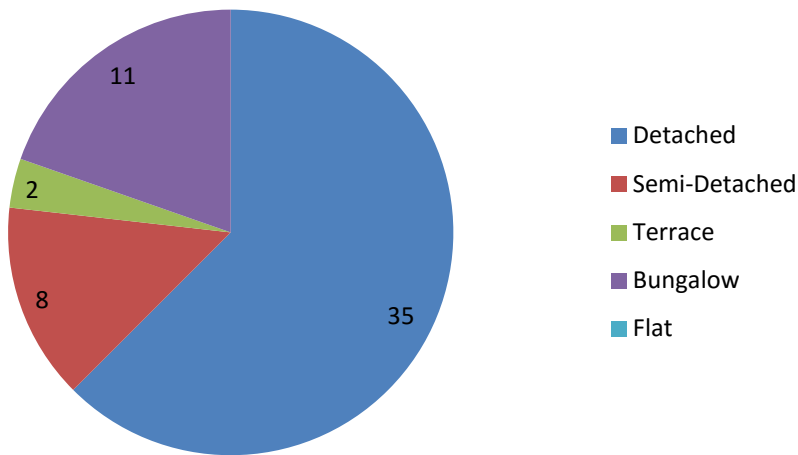
Other concerns/ solutions	Description	Times mentioned
1	Outreach surgery from Cerne Abbas	3
2	Step up volunteers to tranport people	2
3	First responders	2
4	Add a doctors or something useful for elderly	1
5	Seeing the next generation stepping in to continue caring ethos	1
6	Older peoples warden controlled accomodation	1
7	Residential Home	1
8	Is there a local GP and 'out of hours' cover provided	1
9	first aid classes	1
10	Chiropodist to visit a group session in the village hall	1
11	Support for cancer patients - has it changed in last 8 years?	1
12	Bonfire smoke from farms & households	1
13	Appointment booking at surgery should be more flexible esp for people going out to work	1
14	More information in getting help for emergencies put up permanently at shop/pub/village hall	1

Health and Social Care Supplementary Questionnaire

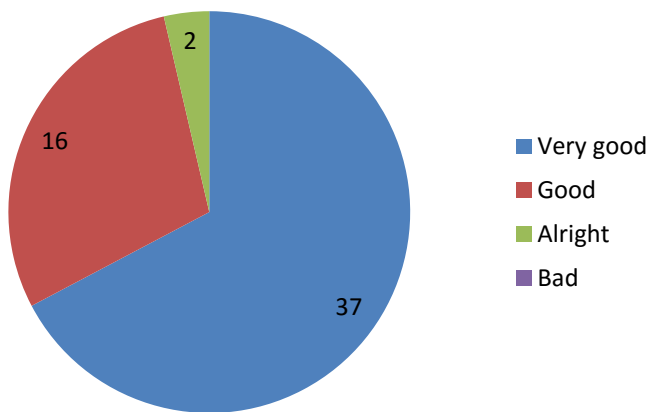
Age of participants



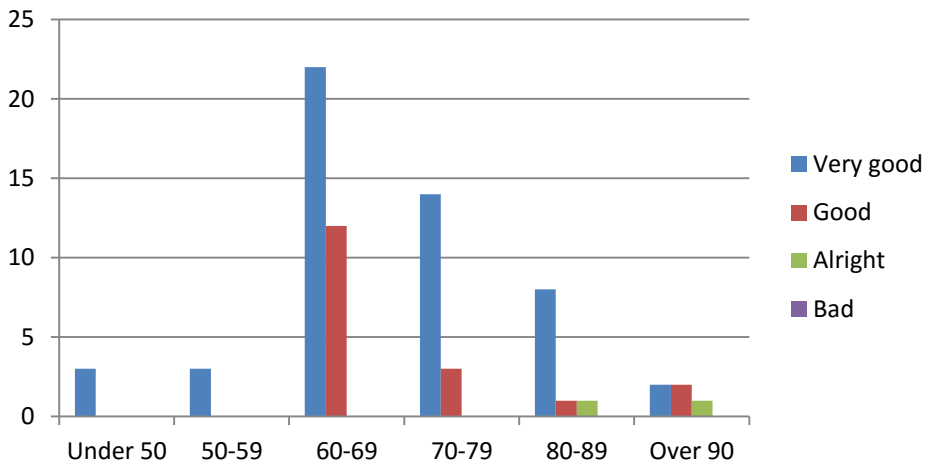
What kind of home do you live in?



How do you rate your quality of life in Buckland Newton as a whole?

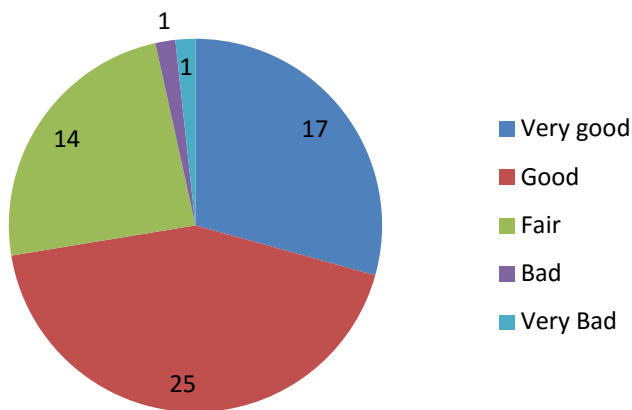


Males and Females

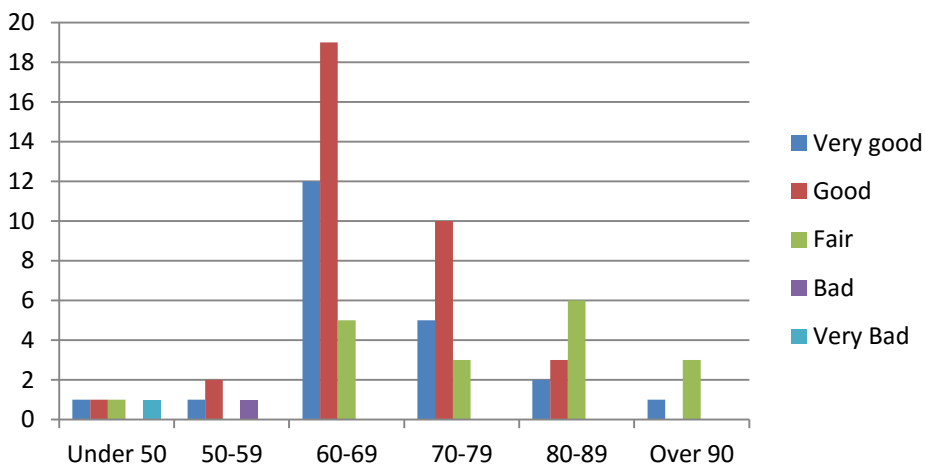


How is your health in general?

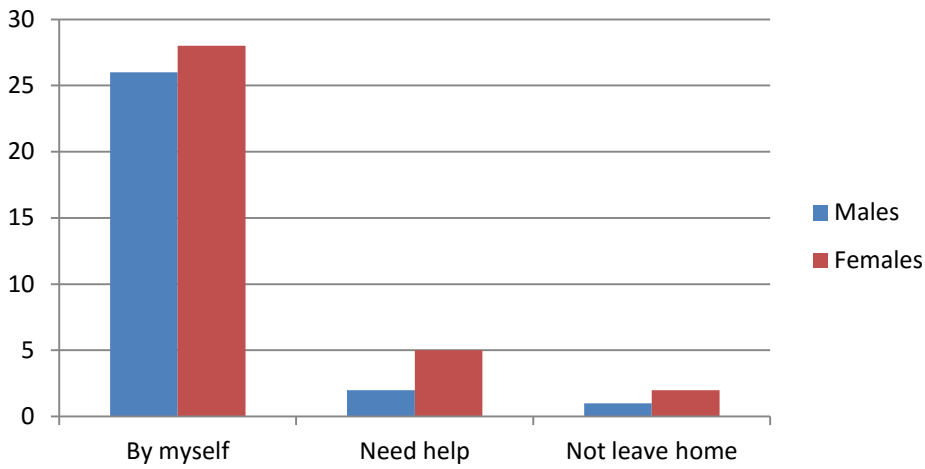
Total



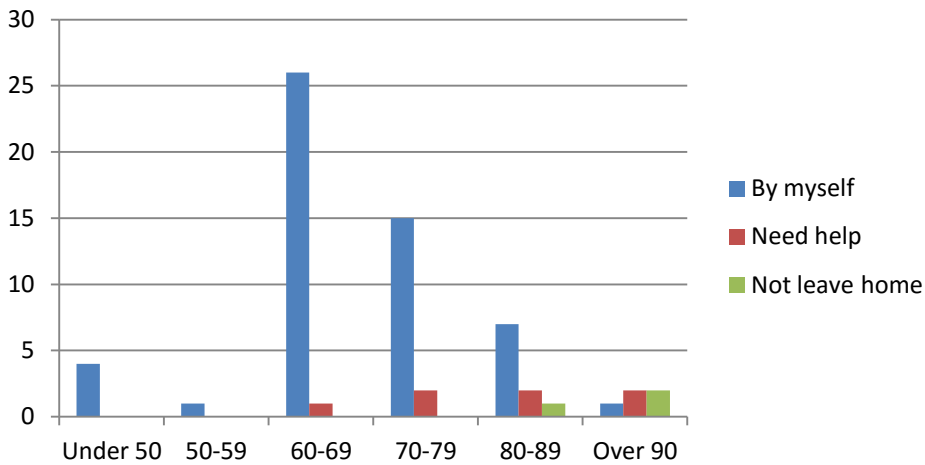
Males and Females



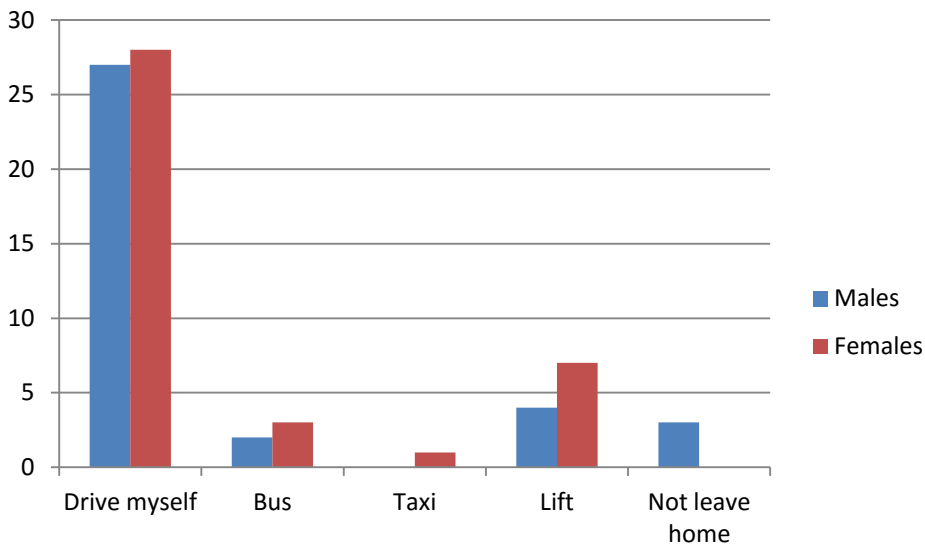
How do you manage getting around the village?



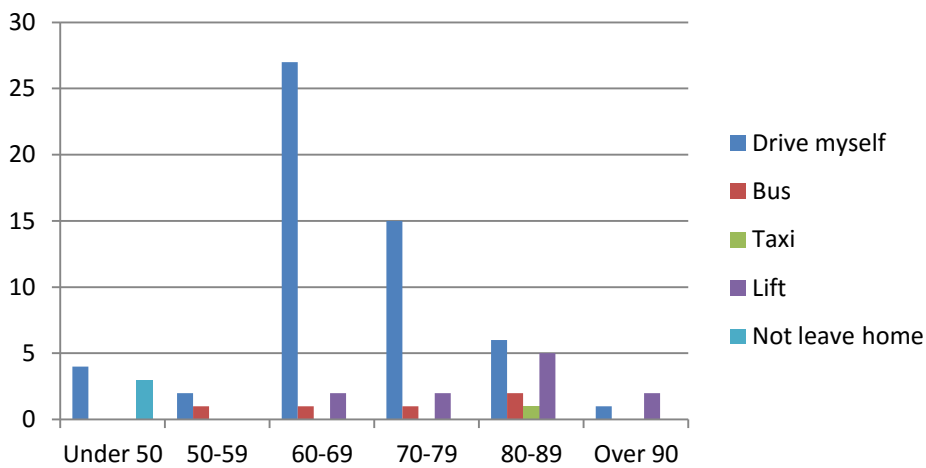
Males and Females



How do you normally travel to places outside the parish?

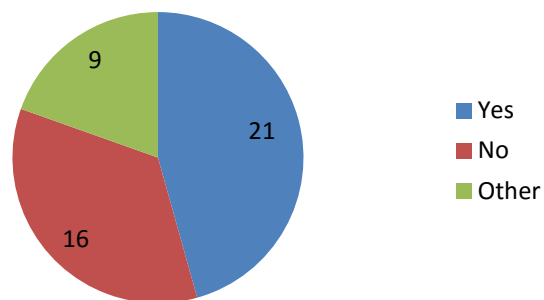


Males and Females

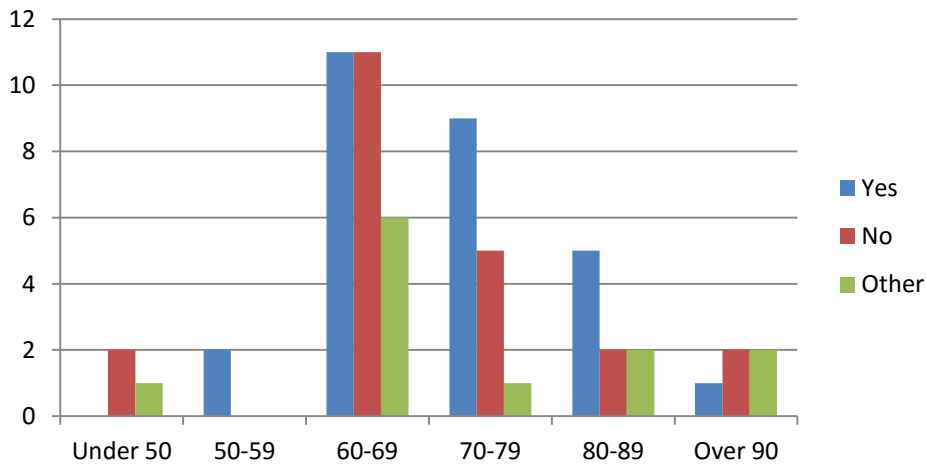


If there was a community based transport scheme set up would you use it?

Total

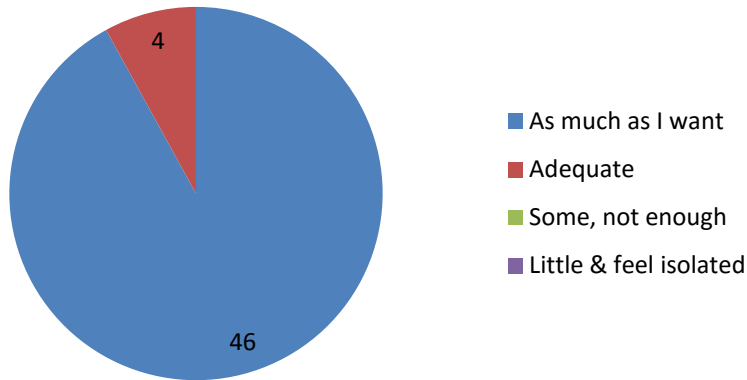


Males and Females

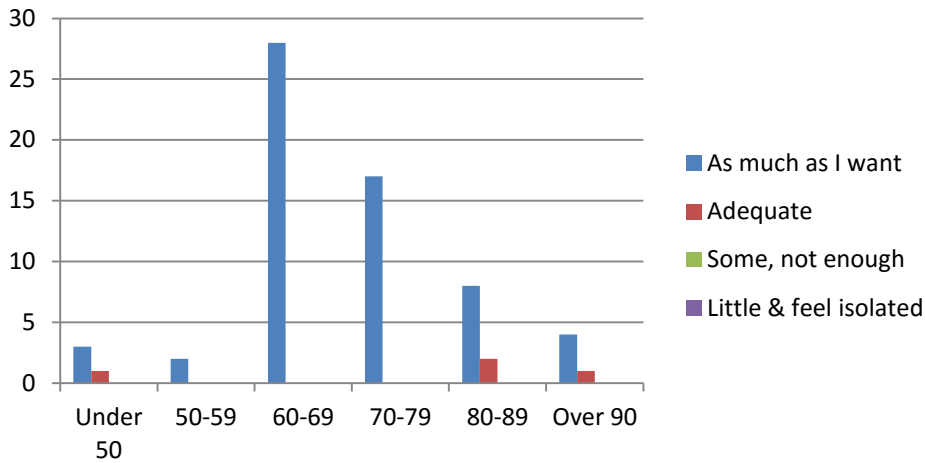


How much contact do you normally have with other people?

Total

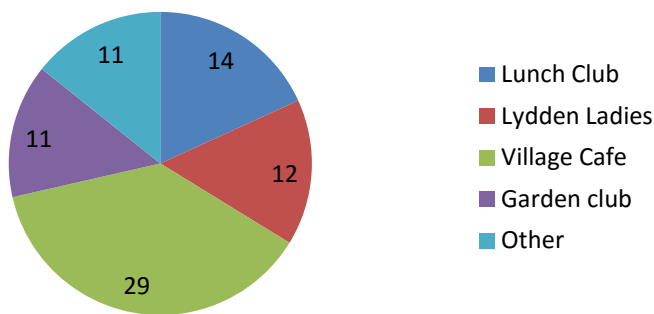


Males and Females

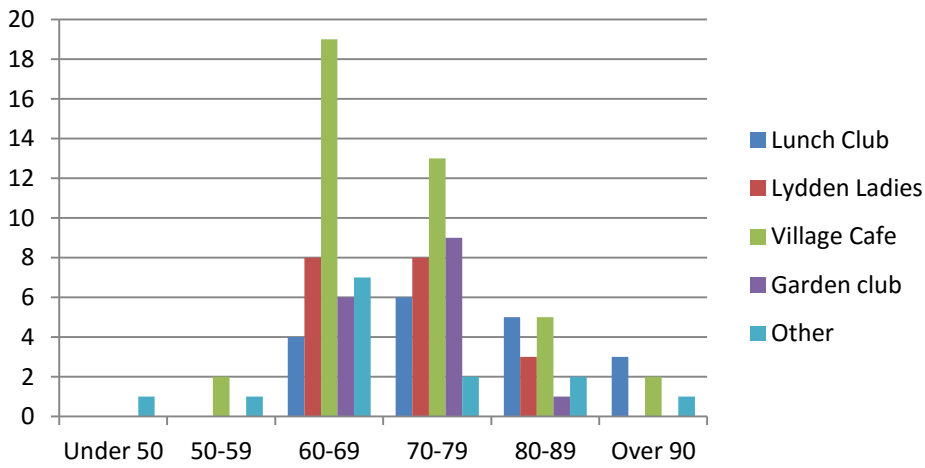


Do you attend any social groups or clubs in the village?

Total

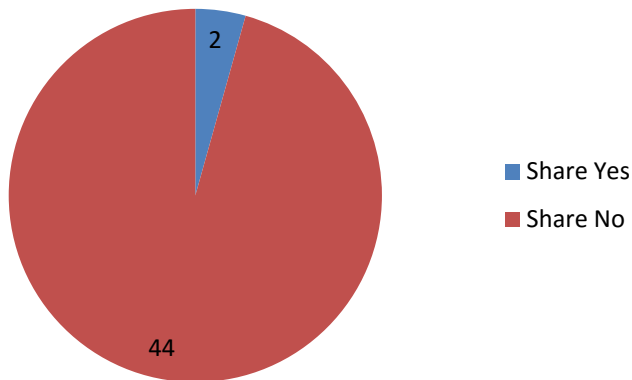


Males and Females

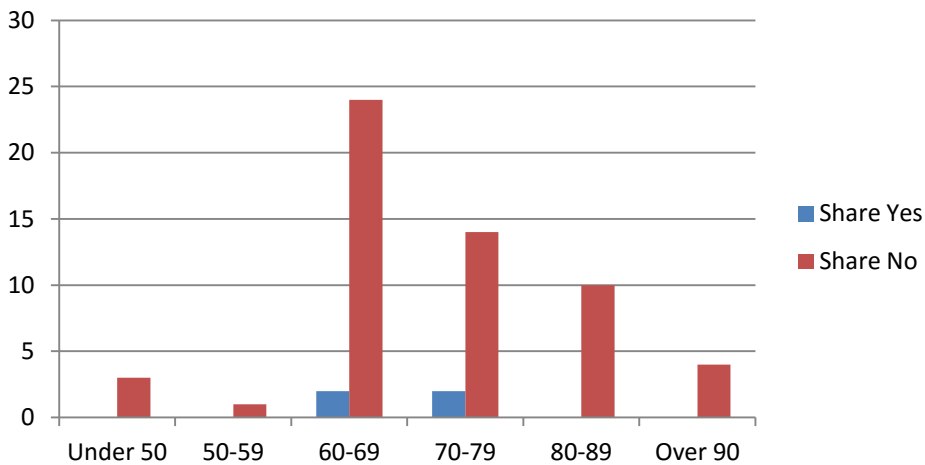


If you think your home is getting too much to cope with, would you share?

Total

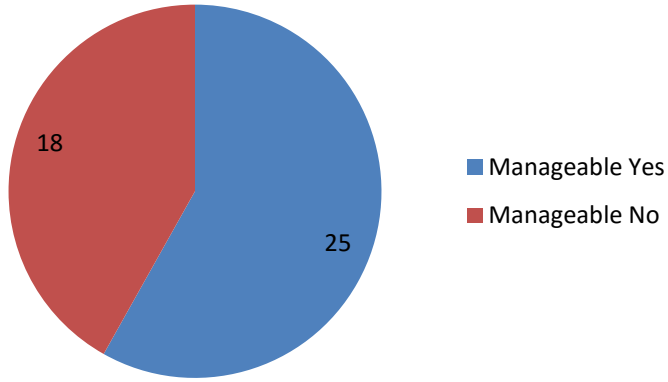


Males and Females

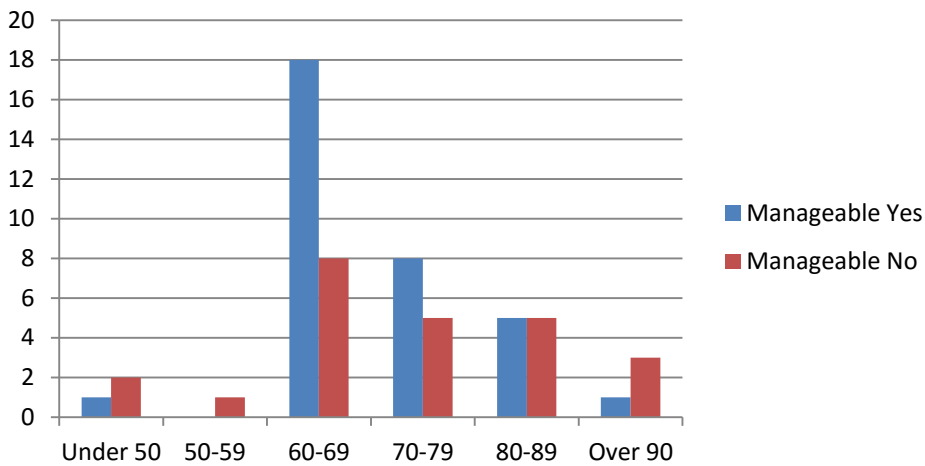


If you think your home is getting too much to cope with, would you prefer to live somewhere more manageable?

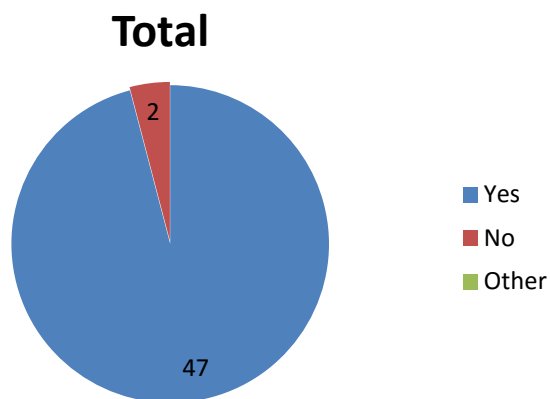
Total



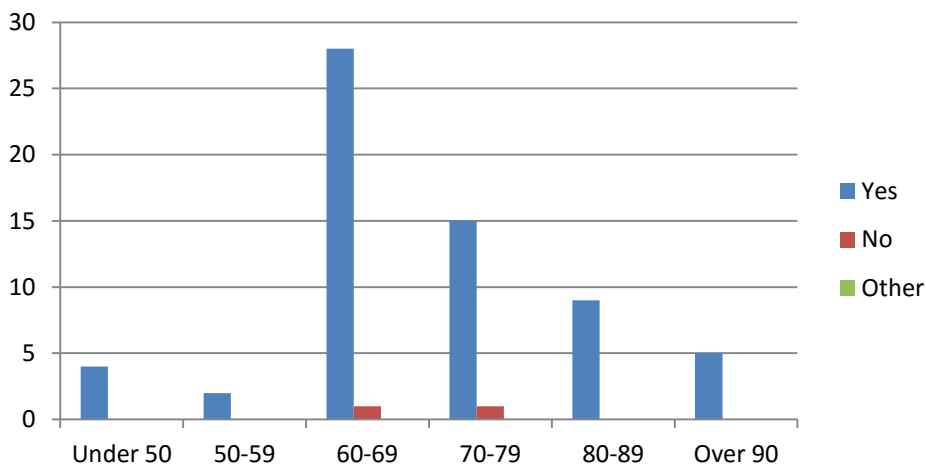
Males and Females



Would you like to stay and live in the parish as long as you are able to do so?



Males and Females



Discussion meeting on Health, Care & Community Facilities – 13 October 2012

About 40 people attended this discussion in the Village Hall, and it was a very productive meeting giving much food for thought.

Participants sat in groups around tables and Jan Burnett explained that each table had a separate topic for discussion. If there was a topic anyone was particularly interested in, they could move to the appropriate table or even take part in more than one discussion. She introduced the two speakers who gave short presentations which helped to get everyone thinking.

Nicki Barker (vice chair of the Parish Council) spoke about how important community spirit is, particularly in a scattered community like Buckland Newton where we depend so

much on good neighbours helping each other. She mentioned some of the challenges the parish has faced – the possible closures of the shop, post office and pub, and how the community came together over them.

She then emphasised that, whatever ideas and solutions to problems come out of consultations like this, we have to think through the whole idea. To present a 'wish list' is not enough. We have to think about how any scheme would be funded, who would set it up and who would run it – so much of what happens in Buckland Newton is because of a pool of willing volunteers, and volunteers need to be recruited in order to help push through any improvement to our community.

She listed the many assets we have here. The Village Hall, the Parish Room, the playing field, the bus shelter, the village pound, the Church, the Hountwell Pump at Henley (which has supplied water to the village since 13thC) are all owned by the village and need to be funded and cared for. The allotments, given the possibility of rising prices and food shortages, are a vital asset now and for the future. There are the commercial assets like the shop and the pub – we will only keep these going if we use them as much as possible. She pointed out the need for an improved broadband service. There are also many groups running in the village – run by volunteers naturally! Again, she emphasised that if we wanted a new group to be set up we have to ask ourselves who would set it up and keep it running – the implication being that if we want something we have to be prepared to do much of the work ourselves.

Nicki also explained the process for undertaking a one-off community project and the role the Parish Council can play. If it is something that would benefit the whole community (rather than just a small minority) the Council could explore what funding might be available to us and then raise the Parish Precept (the amount of our Council tax that comes to the village) to cover any shortfall. This could only happen with the approval of the residents and would only apply to raising funds for that one project.

Julian English, who lives in Cattistock and works for the Partnership for Older People Programme (POPP), gave us a short description of some of the problems facing older people living in a community like ours. A major issue is getting access to shops and services. Many elderly have no car or no longer drive, yet they need to shop and get to their doctor, dentist, chiropodist etc. let alone visit friends. Public transport is not always an option. He then gave us some possible solutions. We could have a neighbourhood car scheme – this covers both medical and non-medical transport and can be a real lifeline for some people. We could consider getting a village minibus which would be invaluable in helping people with doing their 'big shops' at supermarkets. Older people could be helped to shop on line and have their shopping delivered. We could set up a telephone or internet list that linked those with transport to those without.

A First Responders scheme could be set up. This entails several people within the village being trained and equipped to provide emergency medical care within a few minutes, covering the gap between calling an ambulance and it actually reaching the patient. We could set up a 'friendship' service. As Julian reminded us, for many old people loneliness is a problem – something easily solved by good neighbours setting up 'tea and a chat' for those who are housebound. He also raised the issue of housing. Many older people are asset rich and finance poor, i.e. they own their house but don't have the money to maintain it. Could we help older people to downsize and still remain in the village?

One comment to all of the issues and suggestions raised by Nicki and Julian was 'Where are the younger people at this meeting - because all the volunteers are rapidly falling off the perch!' And it is quite true that all the volunteers that keep our community running are of a 'certain age' and we need to find people in their 30s to 50s to get involved.

Each group then had about 20 minutes to discuss the topics at their tables. The results, when each group reported its findings, were very productive; problem issues were highlighted, and there were lots of ideas and suggestions for solving the problems or setting up schemes that would improve the quality of life.

1) Transport & Mobility.

The main issue that came up was **road safety** particularly the **speed** of vehicles going through the village. Something needs to be done to enable the elderly to walk safely anywhere in the village. Where possible, helping them to keep walking would be good for their health. The speed of vehicles, particularly on the B3143, can be a real danger to those walking or using mobility scooters when going to the shop. There was quite a discussion on how vehicles could be made to keep to the speed limit, whether it could be lowered or if such things as sleeping policemen or chicanes could be installed. Chris Hildred has made efforts to get the police involved with little success. Trevor Marpole (Parish Council chair) told us that County Highways Department is (at some point!) implementing a scheme of painted lines delineating a pedestrian walkway and a 'box' scheme to help control traffic at the crossroads.

There was also a suggestion that a **footpath** should be installed on the road side of the playing field, as several children walked to and from the school along the road. Nicki said this had been suggested when planning Lydden Meadow, but there were objections from people living along the B3143 so they had opted to put the footpath on the other side of the playing field. Whether people would still have the same objections could perhaps be explored.

Public transport is available, but only if you find it easy to get to the pick-up places and only if you want to go to Dorchester rather than Sherborne or Sturminster. This is where a **community minibus** would help. (Providing transport for the elderly was also covered under Health Issues and in the final general discussion.

- SAFETY & SPEED issues a recurring problem for pedestrians and mobility scooter users; Suggestions of sleeping policemen or chicanes especially at approach to the shop
- Neighbourhood car scheme suggested for those without transport for trips to the shop, Dorchester, Sherborne etc. Problem of insurance cover might need to be investigated
- Bus service and route at present too limited – e.g. only goes to Dorchester and its route is fixed to the B3143
- Community mini bus would be a useful asset for young and old
- Footpath on the road side of the playing field would be much safer for those who at present walk up along the main road

2) Care

It was agreed that **First Responders** (people in the village trained to give emergency care while waiting for an ambulance to arrive) were needed.

Although not everyone attends the **Cerne Abbas Surgery**, it was felt that the service provided there was good. While neighbours are happy to drive people to Cerne Abbas for

their appointments, it is never possible to coordinate those appointments so that two or three people could be taken over in one trip. To solve this problem it was suggested that perhaps a **weekly surgery** could take place in the Village Hall for prescription needs or regular appointments. This idea was welcomed.

A Telehealth Pad link to the surgery is under trial for people with chronic conditions, allowing them to self-monitor their condition. It links them directly to the surgery which can advise them if any action is needed.

Another issue that was raised was **Aid Alarms**. These can be costly, and some people need help in finding affordable alarm schemes.

Loneliness was discussed and the idea of a weekly 'tea and a chat' arrangement was good, but many people who could visit need to get over their natural reticence about calling on someone in case it is seen as an intrusion.

It was also suggested that regular tea and chat sessions (in the Hall or pub) could be enhanced by combining them with lessons for a craft or computer use. This would make it much more interesting and social if several people could take part.

- Toe nail cutting service not adequate and a problem to access for many suggestion that a something could be set up at Village hall along with tea and chat/drop in on a monthly basis
- The out of hours service at Cerne Abbas surgery was judged to be good as was the day to day service
- A surgery once a week in the Village Hall as happens at Hazelbury Bryan would be useful for those with transport problems
- Tele-health-pads used for those with a chronic condition for self- monitoring with links to the surgery was considered an excellent idea.
- Transport to the surgery could be better coordinated
- Mike Downes' taxi service considered an asset
- First responders would be a life saving asset for a village like BN at such a distance from A&E
- Tea and chat sessions in the Hall or pub combined with lessons

3) Managing home, garden and other responsibilities.

As people get older many need **help with gardening, cleaning** and so on. **Handymen** are also needed. Form filling is another area where help may be welcome. This is where 'Wayfinders' (part of POPP) could help.

Another suggestion, arising out of people needing help in emergencies, was setting up a parish register of volunteers with numbers people could ring. This led to the suggestion of having a **FREE parish newsletter** which would list all the necessary phone numbers plus any other useful information.

Downsizing was discussed. Many older people find it hard to manage a house that has become too large and want to live in something more manageable. It was felt that many would want to **downsize and** stay in the community that they know. This would mean providing suitable **housing** (bungalows), and housing for the elderly should be distributed around the village, not all located in one place.

The final suggestion was to pull down Cranes Meadow and **rebuild** something a lot better.

- SERVICES commonly needed were gardeners, cleaners and handymen (in that order)
- Help with form filling
- Help with emergencies
- A parish register of 'volunteers' who could help with the above would be very useful

NB this idea lead to thinking that every household should receive a magazine FREE if it were to contain such info as suggested

- There was a definite interest in the idea of downsizing AND staying within the village, if there was the appropriate housing . Bungalows were seen as the preferred option for those with mobility problems.
- Some preferred the idea of such a development being integrated within open market property to avoid a 'ghetto'. But this was balanced with the idea of a warden /carer complex.

4) Health & Care Issues

It was felt that there is a real lack of **information** on all different aspects of health. This sort of information ideally could go into a free newsletter, along with information on how to find the help you need. And some people, or their families, have to pay for care. They need to have easy access to all the latest information when arranging or amending it. Some organisations can help the elderly but it was felt that, of those available, Age Concern was no good. The Cerne Abbas surgery on the other hand is good and its after-hours service is okay, but accessing a **chiropodist** is a real problem. But, as with everything else to do with older people living in a rural community, **transport** was seen as a problem. This is something where a well-organised **neighbourhood car scheme** is needed.

- Alarm aids should be more affordable
- Lack of information a problem and Age Concern not found to be helpful
- The financing of care an unknown...again information difficult to access
- Parish magazine could have a directory of where to find such info
- Those with personal experience spoke well of the care received from APEX

5) Community Facilities

The **next generation** down needs to be more involved before some of the current pool of volunteers become too old or wish to sit back. It was mentioned that people in their twenties tend to move out of the village, but they do come back in their thirties and forties. The Youth Club could be encouraged to be more involved in village activities –helping at the fete, and litter-picking were mentioned. Another area where they would be interested in getting involved is helping to sort out computer problems.

The village needs a **modern public toilet block** – those at the back of the Parish Room are not very nice!

Sheltered housing was mentioned as being an option. Another suggestion was ‘could Buckland Newton follow Cerne Abbas and make room for a nursing or retirement home somewhere?’ It would certainly provide employment within the village.

The final suggestion put forward was using redundant farm buildings as **rural craft workshops**. Again, it might help to provide **employment** but there could be problems with the increased **traffic**.

- Need for younger people to become more involved
- Could the youth club become more community minded by helping with the fete or litter picking?
- There is a missing age group...the late teens to 30s
- There is a need for proper toilets to replace the antiquated block off the parish room; question of maintenance & cleaning raised
- Need for more 'sheltered' housing for the elderly,
- Could an organisation/company be attracted to build such a development or a retirement home in the village with all the employment opportunities

- Craft workshops in redundant buildings would be an asset
- Village swimming pool (and tennis court) would be good
(tennis court issue raised at the last meeting and suggestion was to ask school if the old court could be reinstated)

Compiled by Jan Burnett & Lesley Docksey

For the purposes of drawing up the Parish Plan, where issues and concerns mentioned were similar in nature, or where they were mentioned in a different section of the questionnaire, these have been amalgamated as follows:

There were 32 issues mentioned of which the 5 most frequently listed were:

	Responses
1. Transport and distance to surgery / medical services	21
2. Access to and availability of medical services	19
3. Care in the community	7
4. Response to emergencies	5
5. Need for information relating to help	2

Publicising the results of the Public Consultation

Public displays were held in the Village Hall on Thursday 21st February and Saturday 23rd February 2013 with the results of the analysis of the questionnaire.

This was followed by a summary of the results as an insert in the April edition of the Lydden Vale News.

The Next Steps

The Community Plan comprises two separate plans; a Parish Plan which deals with non planning issues (such as speeding, community facilities, footpaths, etc.), and a Neighbourhood Plan which deals with issues which come under the Planning Acts (such as allocation of land for homes and businesses). So far they have been progressing together to prevent duplication, such as consulting the parishioners about their concerns and vision for the future. Although they remain relevant to each other, they will be now following their own paths.

The Parish Plan

The Parish Plan, where it is feasible, will deal with the major concerns and issues raised by you in the questionnaire and meetings, and perhaps other issues where it is possible to easily find and implement a solution. For the main topics of Roads, traffic and transportation, Environment, Community facilities and services, Young people's interests, Crime and safety, Health and social care, a Draft Plan for addressing these issues will be drawn up by the Community Plan Working Group and several Focus Groups made up of parishioners. This will detail actions to be taken, by whom and with a target date for each action.

The Draft Plan will be available for public consultation this summer for you to make your comments. Any necessary amendments will then be made before the Parish Plan is approved and adopted by the Parish Council.

The Parish Council hopes you will all become involved in helping to address some of the issues raised – this is for all of our community.

The Neighbourhood Plan

Put simply the Neighbourhood Plan deals with anything that requires planning permission in our parish, for example, allocation of land for homes, businesses, and perhaps community facilities and renewable energy projects.

The Neighbourhood Plan follows a different path to the Parish Plan, in that it becomes a legal document which effectively becomes part of the West Dorset Local Plan. The Community Plan Working Group is currently working towards a Draft Plan based on the information from the public consultation.

This Draft Plan will be available for public consultation this summer. Once your comments have been received, the plan will be amended to take these into account. You will have the opportunity to vote on this plan in a referendum. Only if it receives a majority in the referendum will the plan come into force. For a more detailed account of the process please visit our website

www.bncommunityplan.co.uk .

Land for homes

Recently concerns have been raised in the community about the Housing Focus Group looking at potential sites for homes.

The Housing Focus Group is currently trying to identify potential sites in the Parish for the 2 to 4 houses per year voted for by the parishioners in the questionnaire. They are looking at sites to see

if it is possible to build, **not at the desirability of the sites – that is for you as parishioners to decide.**

The Group is following a step by step procedure, namely:

1. Identify **all** sites that are either infill or adjacent to existing development.
2. Assess them using West Dorset District Council's (WDDC) Housing Land Assessment sheets as an objective set of criteria and **exclude** those that have problems, such as being in an area that floods, have poor access/visibility, inappropriate terrain, adversely affecting neighbouring properties, etc. (This is what the Housing Focus Group is currently doing).
3. Speak to owners of potential housing sites to see if they will consider selling them (we must produce a plan which has the potential to deliver the homes), and **exclude** those where the owners are not willing to consider selling over the next 15 years.
4. Forward the Assessment Sheets to WDDC Planning for checking and then to be sent to the 'Statutory Consultees', such as the Environment Agency, Conservation and Highways, for their observations.
5. The remaining potential sites will be presented to the Parishioners in a Public Consultation to be held this summer. The Parishioners will be asked to identify their preferred sites and rank them in order of when they should be developed.

Please note that the Housing Focus Group (or its individual members) will NOT be choosing sites for inclusion in the final Plan, or recommending any particular sites, but will only be presenting for your consideration sites that meet certain objective criteria.

It will be up to you, the parishioners, to choose the most appropriate sites and the order in which they should be developed over the next 15 years.

Once the sites are chosen, the Housing Focus Group will consider and recommend the type and number of houses appropriate for each site, and include this in a Draft Plan. At this stage there will be another Public Consultation to be followed by any amendments and then a Referendum. Once approved the Plan will dictate what can be built and where, and will be binding until the Plan is revised, probably in 10 to 15 years. The Plan will also include provisions to ensure the sites are developed gradually over the 15 years, not all at once.

It will be up to the individual landowner to develop or sell the site. Only what is approved in the Plan can be built on that site, and the developer will have to apply to West Dorset District Council in the usual way for Planning Permission for the layout of the site and design details.

If any land owners have land, particularly in the outlying hamlets, which they think meets the basic criteria and they wish to be considered for a house or houses, then please contact either John Baker on 345385 or Jacqui Cuff on 345405. Initial contacts will be treated in confidence, but the sites will obviously become known to the Parishioners if they are put forward to the next stage.

Appendix 1: Buckland Newton Parish map



Appendix 2: Questionnaire

Buckland Newton Parish Council

Buckland Newton Community Plan

Parishioner Questionnaire

One questionnaire per household is being issued, but if you require additional copies please contact your local distributor named below.

The purpose of this questionnaire is to ask you and your household about your vision for the future of Buckland Newton, and to find out about any issues and concerns you have. We hope you can find a little time to complete this questionnaire.

There is more information about the Community Plan on the following page.

This is your community, and your chance to have your say.

If you would like some help in completing this form, please contact your Local Distributor who will arrange for someone to help you.

Your Local Distributor is Telephone No.....

Returning this form:

You can either return this form to your local distributor who will call on

or you can leave it in the special Community Plan box at the Gaggle of Geese or the Old Chapel Stores

Deadline for return is the 31st October

Your replies will remain confidential - only a summary of the findings will be published to help us put together our Community Plan

Buckland Newton Community Plan – Parishioner Questionnaire

With the introduction of the Localism Act, Buckland Newton Parish Council decided in early 2011 to prepare a Neighbourhood Plan for the whole parish. This will enable us as a community to have more say in the future development of the parish. Later it was decided to draw up a Parish Plan at the same time.

A **Neighbourhood Plan** deals with any development or issues that normally come under the Planning Act, such as housing, business premises, and anything else needing planning permission.

A **Parish Plan** deals with community issues and concerns that parishioners may have, such as public transport, dog fouling, clearing footpaths, allotments, local care facilities, etc.

Together these two plans will be called the Buckland Newton Community Plan.

The results of the replies from your household will help develop a Community Plan for the next 10 or 15 years.

If you require any more information please visit the Community Plan website www.bncommunityplan.co.uk or contact:

John Baker on 01300 345386 or Jacqui Cuff on 01300 345405

A report summarising the findings of this public consultation exercise will be published early in 2013.

Please enter the number of people in your household in each age group. (We need feedback from all age groups).

Age	No. of males	No. of females
Under 11		
11 – 15		
16 – 17		
18 - 22		
23 - 44		
45 - 64		
65		

Population and Housing

Background Information

Between 1981 and 2001 (census data)

- there was an increase of 28% in the population of Buckland Newton Parish from 483 to 618 people
- there was an increase of 41% in the number of households in the parish from 179 to 252
- there was a decrease in the average number of people per household from 2.7 to 2.4
- Age splits: Age 0-15 dropped from 22% to 21%
Age 16 – pensionable age increased from 53% - 62%
Pensionable age dropped from 25% to 17%

Preliminary data from the 2011 census suggests that since 2001 the population has fallen slightly to 600 (-3%), but the number of households has continued to rise to 284 (+13%). Thus the number of people per household has continued to fall to 2.1

Growth or no growth?

There are always likely to be a small number of new houses built over the years, so the choice is one of either minimum growth or promoting low growth in the parish.

There are pros and cons for each choice: The pros for each choice may be described:

Minimum Growth

- No changes to the lifestyle of the inhabitants
- No internal traffic increase
- No noise increase
- No encroachment into the open countryside

Low Growth

- Halt the decrease and even increase the number of pupils at the village school ensuring its future
- Possible provision of more affordable houses for local families
- Increased viability for existing local businesses such as the village shop and pub
- Potential for more amenities/ continuing viability of existing amenities (e.g. youth club)

Question 1. Over the next 10 or 15 years, do you wish to see

- a) No new housing except for a small number of individual houses
- b) An average of 2 to 4 new houses per year
(e.g. 20 - 40 houses over 10 years)
- c) An average of 5 or 6 houses per year
- d) More than 6 per year

Question 2. Where would you like to see new housing?

(You may tick more than one box)

- Buckland Newton village
- Henley
- Cosmore
- Duntish
- Other hamlets
- Please state where.....

Question 3. What type of housing would you like to see?

- a) Open market housing (no restrictions on who lives there)
- b) Affordable housing for local people (such as Lydden Meadow)
- c) A mixture of open market and affordable housing

If c), please give proportions: Open market _____%

Affordable _____%

Employment and Local Business

Background Information

There are in the region of 80 organisations and businesses in the parish providing employment for well over 100 people, in both full and part-time jobs. These include the school, pub, shop, farmers, etc, and well as many individual people working from home. There are three sites providing business units for rent, all as converted or replaced redundant farm buildings, plus two office units next to the Village Hall.

Over the next 10 to 15 years, would you be happy to see, subject to situation and appropriate planning conditions:

	Yes	No
Suitable redundant farm buildings converted to business use	<input type="checkbox"/>	<input type="checkbox"/>
The provision of small craft workshops /small business starter units	<input type="checkbox"/>	<input type="checkbox"/>
The provision of a small number of new business units for rent	<input type="checkbox"/>	<input type="checkbox"/>

Comments / any other issues concerning employment and business:

The following sections are to find out your views to help us develop a Parish Plan; there are no specific questions – we would like to hear what your concerns or issues are, and also what you think is good. If you want more space, please continue on a separate piece of paper.

Roads, Traffic and Transportation

Including speeding, provision of public transport, pedestrian facilities, parking, specific road safety concerns

Three issues that concern you the most:

- 1.
- 2.
- 3.

Three things you think are good regarding roads, traffic and transportation in the parish:

- 1.
- 2.
- 3.

Any other concerns and possible solutions:

Environment

Including public rights of way, dogs, plants and trees, recycling, litter/fly tipping, woodlands, ponds, listed buildings, domestic renewable energy, commercial/community renewable energy, etc

Three issues that concern you the most:

- 1.
- 2.
- 3.

Three things you think are good regarding the environment in the parish:

- 1.
- 2.
- 3.

Any other concerns and possible solutions:

Community Facilities and Services

E.g. shop/post office, pub, village hall, parish field and play area, internet speed, village news/website, TV and mobile reception, clubs and societies, sports facilities, entertainment, etc.

Three issues that concern you the most or could be improved, e.g. bus shelter, parish toilets:

- 1.
- 2.
- 3.

Three things you think are good about community facilities in the parish:

- 1.
- 2.
- 3.

What NEW facilities and/or services would you like to see, e.g. community transport scheme

- 1.
- 2.
- 3.

Possible solutions to your concerns:

Would you be willing to pay a little more Council Tax (Parish Precept) if that money is used only for improving our community?

Yes

No

Young People's Interests

Including youth club, transport, sports facilities, etc

Three issues that concern you the most:

- 1.
- 2.
- 3.

Three things you think are good about Young People's Interests in the parish:

- 1.
- 2.
- 3.

What other facilities would you like to see?

Crime and Safety

Including neighbourhood Watch, community policing, antisocial behaviour, etc:

Three issues that concern you the most:

- 1.
- 2.
- 3.

Three things you think are good regarding crime and safety in the parish:

- 1.
- 2.
- 3.

Any other concerns and possible solutions:

Health and Social Care

Including local health facilities, transport to surgery, provision of care

Three issues that concern you the most:

- 1.
- 2.
- 3.

Three things you think are good regarding health and social care in the parish:

- 1.
- 2.
- 3.

Any other concerns and possible solutions:

Thank you for completing this questionnaire

If you are retired, or are younger but have a serious health or social care issue, we would be grateful if you would answer the following Health & Social Care supplementary questions. Your answers will remain totally confidential, but will help us to plan for more appropriate facilities in our community.

Health & Social Care Supplementary Questions

If you are retired, or are younger but have a serious health or social care issue, we would be grateful if you would answer the following supplementary questions. Your answers will remain totally confidential, but will help us to plan for more appropriate facilities in our community.

1. Are you Male? Female?

2. How old are you? Under 50 50-59
60-69 70-79
80-89 Over 90

3. What kind of home do you live in?

Detached house Semi-detached
Terrace Bungalow
Flat

4. How do you rate your quality of life in Buckland Newton as a whole?

Very good Good
Alright Bad

5. How is your health in general?

Very good Good
Fair Bad
Very bad

If you have any issues with your health, please answer the following questions:

How do you cope with your condition? Please tick all appropriate boxes.

Visits from Community Matron/Nurse/Occupational Therapist

Carer provided by County Council

Self funded Carer

Cared for by Partner

Cared for by Family

Cared for by Neighbour

What kind of help do you receive? Please tick all appropriate boxes.

Help in getting up

- Help in preparing a meal
- help in cleaning the home
- Help in gardening
- Personal care
- Help in getting to bed

Other (please write in).....

6. How do you manage getting around the village?

- I can get to all the places locally that I want by myself
- I need help in getting to all the places locally that I want
- I do not leave my home

7. How do you normally travel to places outside of the parish?

- Drive myself
- Go by bus
- Go by taxi
- Get a lift from family/friend/neighbour
- I do not leave my home

8. If there was a village community based transport scheme set up, would you use it?

- Yes No

9. How much contact do you normally have with other people?

- I have as much social contact as I want
- I have adequate social contact
- I have some social contact, but not enough
- I have little social contact and feel isolated

10. Do you attend any social groups or clubs in the village?

- Lunch Club Village Cafe
- Lydden Ladies The Garden Club

Other (please name).....

11. If you think your home is getting too much to cope with, would you:

consider sharing your house with a companion or lodger?

Yes No

prefer to live somewhere more manageable?

Yes No

If 'Yes', would you be interested in renting or buying more suitable accommodation in the village?

Yes No

12. Would you like to stay and live in the parish as long as you are able to do so?

Yes No

Are there any specific community facilities you think are needed to make the parish an even better place to live in?

Thank you for completing this questionnaire

Please use this page for any other comments or observations you wish to make

Appendix 3: List of Meetings handout

Buckland Newton Parish Council

Buckland Newton Community Plan **Public Consultation**

We want to find out ***your vision*** for the future of Buckland Newton over the next 10 to 15 years

Meetings at **Buckland Newton Village Hall**

- Thursday **27th September** at 7.00 pm
Launch Meeting – find out about the Community Plan / start the discussion
- Saturday **29th September** 10.30 am – 12.00 noon
Open Morning – come for a cup of coffee and let us know your views
- Thursday **4th October** at 7.00 pm
Discussion about future **Population and Housing** in Buckland Newton
- Saturday **13th October** at 10.30 am
Meeting to discuss **Health, Care and Community Facilities**
- Thursday **18th October** at 7.00 pm
Meeting to discuss **Business and Employment, including Farming, Education and Tourism**
- Thursday **25th October** at 7.00 pm
Meeting to discuss **Countryside/Landscape and Built Environment issues**

Have your say!

For more information please visit our website
www.bncommunityplan.co.uk