



INSPLACE PLANNING LTD

**East Dorset District Council  
PPG17 Open Space Study**

**Section 6**

**Area Profile:  
Ferndown and West  
Parley**

May 2007

## **STRUCTURE**

### **1.0 DESCRIPTION OF AREA – FERNDOWN AND WEST PARLEY**

### **2.0 SUMMARY OF PROVISION AND QUALITY OF OPEN SPACE**

#### **2.1 Open space within Ferndown and West Parley**

#### **2.2 Quality of sites:**

##### **2.2.1 Active Sports Space**

##### **2.2.2 Space for Children and Young People**

##### **2.2.3 Amenity Green Space**

##### **2.2.4 Natural and Semi Natural Green Space and Green Corridors**

##### **2.2.5 Recreation Grounds and Public Gardens**

##### **2.2.6 Education Outdoor Sports Facilities**

### **3.0 SUMMARY OF ACCESSIBILITY**

#### **3.1 Overall access to open space**

#### **3.2 Access to different types of open space**

### **4.0 FINDINGS FROM SURVEY AND CONSULTATION**

### **5.0 QUANTITY OF OPEN SPACE**

#### **5.1 Quantity standards of open space**

#### **5.2 Quantities of different types of open space**

#### **5.3 Key Points: Quantitative Provision of Open Space**

### **6.0 ISSUES ARISING**

## **LOCAL NEED AREA – FERNDOWN AND WEST PARLEY**

### **1.0 DESCRIPTION OF AREA – FERNDOWN AND WEST PARLEY**

Ferndown is the largest settlement in East Dorset and forms a single built-up area with West Parley. The two settlements stand on a low, sandy ridge that runs eastwards from Colehill to Dudsbury Heights, and are separated from West Moors in the north by the valley of the Uddens Water and from Bournemouth to the south by the valley of the Stour. Nowhere does the land rise much above 30 metres (100 feet). To the north, east and west there are important heathlands, designated as Sites of Special Scientific Interest, immediately adjoining the built-up area. These form part of the corridors of open land which separate Ferndown and West Parley from West Moors in the north, from Hurn ('Bournemouth International') airport and St. Leonards to the east and from Colehill and Stapehill to the west.

Ferndown experienced substantial housing development in the 1970s and 80s and Ferndown Upper School and adjoining Leisure Centre were built at that time. The Local Plan notes that the provision of open space within the urban fabric was limited (part of the existing King George V playing fields was lost to the development of the upper school). Further development is constrained by the land designated for nature conservation purposes surrounding the town.

In the north east corner of the LNA lies Ford Lane Recreation Ground adjacent to the Heatherlands Estate. In the south of the LNA as West Parley runs into the outer limits of Christchurch Borough are situated Parley Sports Club and West Parley Recreation Ground; also within West Parley but outside the LNA for this study lies the considerable playing field and sports resources of Bournemouth Sports Club.

The countryside surrounding the built-up area, much of which lies within the South East Dorset Green Belt is extensively used for recreation, with golf courses, riding establishments and sports fields, in addition to the well used network of footpaths and bridleways. Particular care is needed to prevent the landscape becoming degraded.

### **2.0 SUMMARY OF PROVISION AND QUALITY OF OPEN SPACE**

#### **2.1 Open Space within Ferndown & West Parley**

The Accompanying Map shows the location and typology of open space within Ferndown & West Parley. The following sites have been mapped; many were included in the quality audits; detailed scores of the assessments are held on the GIS database and should be referred to as required.

Additional amenity greenspace at KGV playing fields  
Additional Amenity Greenspace at the Recreation Ground  
Additional Grounds at Ferndown First School  
Additional Grounds at Ferndown Middle School  
Additional Grounds at Ferndown Upper School  
Additional Grounds at Parley First School

Amenity greenspace adjacent 133 Coppice Avenue  
 Amenity greenspace at Dugdell Close play area  
 Amenity greenspace at junc of Ford Lane and Medway Road  
 Amenity greenspace between 1 & 11 Dugdell Close  
 Amenity greenspace between 101 and 131 Medway Road  
 Amenity greenspace between 126 and 128 Medway Road  
 Amenity greenspace between 133 and 155 Medway Road  
 Amenity greenspace Between 14 & 16 Severn Road  
 Amenity greenspace Between 37 & 49 Severn Road  
 Amenity greenspace Between 45 & 47 Medway Road  
 Amenity greenspace Between 5 & 15 Tamar Close  
 Amenity greenspace Between 89 & 91 Medway Road  
 Amenity greenspace Footpath at 52 Warren Walk  
 Amenity greenspace Footpath Between 61 & 71 Medway Road  
 Amenity greenspace Footpath between Humber Road & Derwent Close  
 Amenity greenspace Footpath between Humber Road & Medway Road  
 Amenity greenspace Footpath between Medway Road & Derwent Close  
 Amenity greenspace footpath between Severn Road & Tamar Close  
 Amenity greenspace Footpath on Humber Road  
 Amenity greenspace on Humber Road / Trent Way  
 Amenity greenspace on Lockyers Drive  
 Amenity greenspace on the East Side of Turbury Court  
 Amenity greenspace on the south side of 24 Medway Road  
 Amenity greenspace Outside 163 to 189 Leeson Drive  
 Amenity greenspace Outside 17 Larks Rise  
 Amenity greenspace Outside 26 Prunus Drive  
 Amenity greenspace Outside 7 to 19 Severn Road  
 Amenity greenspace to east of Ferndown Upper School  
 Amenity greenspace to north of 45 Dugdell Close  
 Amenity greenspace to north of 75 Dugdell Close  
 Amenity greenspace to south of 31 Medway Road  
 Amenity greenspace to south of 73 Dugdell Close  
 Amenity greenspace to west of 101 Dugdell Close  
 Amenity verge on Barns Road / Corbin Road  
 Amenity Verge on Casterbridge Road (to north of The Angel)  
 Amenity Verge on Gallows Drive  
 Basketball Nets at Recreation Ground  
 Belle Vue Woodland  
 Big Burles  
 Big Copse  
 Birch Woodland, Poor Common amenity greenspace  
 Bluebird Social Club  
 Bluebird Social Club Grounds  
 Brabourne Avenue Woodland  
 Burial Ground at Stapehill Abbey  
 Burrell's Copse  
 Cannon Hill Plantation (part)  
 Conservation Green, Poor Common amenity greenspace  
 Crow Copse  
 Curlew Close LAP  
 Dugdell Close LEAP  
 Ferndown (Middle and Upper) School Playing Fields  
 Ferndown Bowls Club  
 Ferndown Common  
 Ferndown Common woodland

Ferndown First School MUGA  
 Ferndown Forest to east of Stapehill Abbey  
 Ferndown Golf Course  
 Ferndown Leisure Centre  
 Ferndown Middle School Gymnasium  
 Ferndown Middle School MUGA  
 Ferndown Upper School All Weather Sports Ground  
 Ferndown Upper School MUGA  
 Ferndown Village Hall  
 Fitzpain Road Footpath to Poor Common Amenity Greenspace  
 Fitzpain Road LAP  
 Ford Lane LEAP  
 Ford Lane Local Nature Reserve  
 Ford Lane Recreation Ground  
 Heatherlands Centre  
 Heatherlands Centre MUGA  
 KGV Pavilion  
 KGV Playing Fields  
 KGV Playing Fields Pavilion  
 KGV Playing Fields Playground NEAP  
 KGV Playing Fields Skate Park  
 KGV Playing Fields Tennis Courts  
 LAP at 1 Warren Walk  
 LAP at 43 Warren Walk  
 Laymoor Copse  
 Martin's Drive Amenity greenspace  
 Memorial Hall  
 Millennium Park  
 Mountbatten Drive LAP  
 NEAP at Recreation Ground  
 Parley Common  
 Parley Common Nature Reserve  
 Parley First School Hall  
 Parley First School Playing Fields  
 'Parley Leisure Centre'  
 Parley Sports Club  
 Parley Wood  
 Play area on Casterbridge Road, Poor Common  
 Play area on Henchard Close, Poor Common  
 Play area to the rear of 48 Medway Road  
 Poor Common amenity greenspace south of Casterbridge Road  
 Poor Common greenways amenity greenspace  
 Poor Common woodland buffer zone  
 Poor Common woodland buffer zone  
 Proposed amenity greenspace at Bracken Road  
 Redwood Drive LAP  
 Slop Bog Nature Reserve  
 St Mark's Church Hall  
 Stapehill Abbey Grounds  
 Stapehill Village Hall  
 Teenage Shelter at KGV playing fields  
 The Roughs  
 The Warren woodland  
 Tom's Coppice, Woodland to north of Woodland Walk & Gladelands Park woodland  
 Uddens Heath

West Parley Recreation Ground  
 West Parley Sports Field  
 Wollaton Crescent LAP  
 Wollaton Road LAP  
 Woodland adjacent to Chestnut Grove  
 Woodland between Wimborne Road East and Ringwood Road  
 Woodland east of Big Burles  
 Woodland on eastern side of Barrack Road  
 Woodland on south side of Ferndown Common  
 Woodland on Western side of Barrack Road  
 Woodland surrounding Ford Lane Recreation Ground  
 Woodland to east of Ford Lane Local Nature Reserve  
 Woodland to the north of Leeson Drive  
 Woodland to the north of Wimborne Road West  
 Woodland west of Slop Bog Nature Reserve  
 Woodland within Parley Common Nature Reserve  
 Youth Centre to NW of Ferndown First School

## 2.2 Quality of sites in Ferndown and West Parley

*In the following lists 'n/s' means 'Not scored'.*

### 2.2.1 Active Sports Space

Site	Quality
Ferndown Bowls Club	76.6 %
KGV Sports Ground Tennis Courts	70.3 %

Both facilities are in reasonable condition, improving the general management and maintenance of the sites would enhance the user's experience.

### 2.2.2 Space for Children and Young People

Site	Quality
Basketball Nets at Recreation Ground	70.4 %
Dugdell Close LEAP	82.0 %
Ford Lane LEAP	n/s
Heatherlands Centre MUGA	66.7%
KGV Playing Fields Playground NEAP	68.1 %
KGV Playing Fields Skate Park	60.0 %
NEAP at Recreation Ground	85.2 %
'Parley Leisure Centre'	n/s
Play area on Casterbridge Road, Poor Common	89.6 %
Play area on Henchard Close, Poor Common	94.1 %
Teenage Shelter at KGV playing fields	n/s
Youth Centre to NW of Ferndown First School	n/s

The Space for Children and Young People in the area is generally good, the skate park and the playground at KGV Playing Fields requires attention. Ford Lane LEAP has not been scored as it is in a derelict state.

## 2.2.3 Amenity Green Space

Site	Quality
Additional amenity greenspace at KGV playing fields	n/s
Additional Amenity Greenspace at the Recreation Ground	n/s
Amenity greenspace adjacent 133 Coppice Avenue	n/s
Amenity greenspace at Dugdell Close play area	n/s
Amenity greenspace at junc of Ford Lane and Medway Road	n/s
Amenity greenspace between 1 & 11 Dugdell Close	n/s
Amenity greenspace between 101 and 131 Medway Road	72.2 %
Amenity greenspace between 126 and 128 Medway Road	66.6 %
Amenity greenspace between 133 and 155 Medway Road	72.2 %
Amenity greenspace Between 14 & 16 Severn Road	n/s
Amenity greenspace Between 37 & 49 Severn Road	n/s
Amenity greenspace Between 45 & 47 Medway Road	n/s
Amenity greenspace Between 5 & 15 Tamar Close	n/s
Amenity greenspace Between 89 & 91 Medway Road	n/s
Amenity greenspace Footpath at 52 Warren Walk	80.0 %
Amenity greenspace Footpath Between 61 & 71 Medway Road	n/s
Amenity greenspace Footpath between Humber Road & Derwent Close	83.3 %
Amenity greenspace Footpath between Humber Road & Medway Road	n/s
Amenity greenspace Footpath between Medway Road & Derwent Close	83.3 %
Amenity greenspace footpath between Severn Road & Tamar Close	n/s
Amenity greenspace Footpath on Humber Road	n/s
Amenity greenspace on Humber Road / Trent Way	n/s
Amenity greenspace on Lockyers Drive	n/s
Amenity greenspace on the East Side of Turbury Court	n/s
Amenity greenspace on the south side of 24 Medway Road	n/s
Amenity greenspace Outside 163 to 189 Leeson Drive	n/s
Amenity greenspace Outside 17 Larks Rise	n/s
Amenity greenspace Outside 26 Prunus Drive	n/s
Amenity greenspace Outside 7 to 19 Severn Road	n/s
Amenity greenspace to east of Ferndown Upper School	n/s
Amenity greenspace to north of 45 Dugdell Close	n/s
Amenity greenspace to north of 75 Dugdell Close	n/s
Amenity greenspace to south of 31 Medway Road	n/s
Amenity greenspace to south of 73 Dugdell Close	n/s
Amenity greenspace to west of 101 Dugdell Close	n/s
Amenity verge on Barns Road / Corbin Road	n/s
Amenity Verge on Casterbridge Road (to north of The Angel)	n/s
Amenity Verge on Gallows Drive	n/s
Birch Woodland, Poor Common amenity greenspace	n/s
Conservation Green, Poor Common amenity greenspace	77.7 %
Curlew Close LAP	70.0 %
Fitzpain Road Footpath to Poor Common Amenity Greenspace	73.9 %
Fitzpain Road LAP	55.6 %
LAP at 1 Warren Walk	80.0 %
LAP at 43 Warren Walk	80.0 %
Martin's Drive Amenity greenspace	90.0 %
Mountbatten Drive LAP	80.0 %
Play area to the rear of 48 Medway Road	n/s
Poor Common amenity greenspace south of Casterbridge Road	n/s
Poor Common greenways amenity greenspace	n/s
Redwood Drive LAP	68.8 %

Wollaton Crescent LAP	80.0 %
Wollaton Road LAP	85.0 %

In general, the management and maintenance of amenity green spaces across the area was found to be good. A number of sites offer opportunity for improvement:

- Medway Road
- Fitzpain Road
- Redwood Drive

#### 2.2.4 Natural & Semi Natural Space and Green Corridors.

Site	Quality
Belle Vue Woodland	75.0 %
Big Burles	75.0 %
Big Copse	n/s
Brabourne Avenue Woodland	73.3 %
Burrell's Copse	n/s
Cannon Hill Plantation	n/s
Crow Copse	n/s
Ferndown Common	90.9 %
Ferndown Common woodland	62.5 %
Ferndown Forest / Uddens Plantation	n/s
Ferndown Forest to east of Stapehill Abbey	62.5 %
Ford Lane Local Nature Reserve	54.5 %
Laymoor Copse	n/s
Parley Common	90.9 %
Parley Common Nature Reserve	90.9 %
Parley Wood	50.0 %
Poor Common woodland buffer zone	87.5 %
Poor Common woodland buffer zone	87.5 %
Slop Bog Nature Reserve	72.7 %
The Roughs	n/s
The Warren woodland	38.5 %
Tom's Coppice, Woodland to north of woodland Walk & Gladelands Park woodland	n/s
Uddens Heath	45.5 %
Woodland adjacent to Chestnut Grove	n/s
Woodland between Wimborne Road East and Ringwood Road	62.5 %
Woodland east of Big Burles	75.0 %
Woodland on eastern side of Barrack Road	62.5 %
Woodland on south side of Ferndown Common	76.9 %
Woodland on Western side of Barrack Road	n/s
Woodland surrounding Ford Lane Recreation Ground	50.0 %
Woodland to east of Ford Lane Local Nature Reserve	33.3 %
Woodland to the north of Leeson Drive	n/s
Woodland to the north of Wimborne Road West	n/s
Woodland west of Slop Bog Nature Reserve	n/s
Woodland within Parley Common Nature Reserve	50.0 %

In general, the management and maintenance of Natural & Semi Natural Green Space across the area were of reasonable condition. Urgent attention is required to



Ford Lane Local Nature Reserve and Uddens Heath, both sites are in very poor condition.

### 2.2.5 Recreation Grounds and Public Gardens

Site	Quality
Ford Lane Recreation Ground	61.5 %
KGV Playing Fields	69.0 %
Millennium Park	74.4 %
West Parley Recreation Ground	70.4 %
West Parley Sports Field	75.7 %

Ford Lane Recreation Ground and KGV Playing Fields require substantial investment, the access within the sites is poor and the general condition of the parks is not acceptable. These parks are well used and require urgent attention to bring them up to a reasonable standard. (However, in consultation with sports clubs it emerged that King George V playing fields are regarded as excellent).

### 2.2.6 Education Outdoor Sports Facilities

Site	Quality
Ferndown (Middle and Upper) School Playing Fields	n/s
Ferndown First School MUGA	n/s
Ferndown Middle School MUGA	n/s
Ferndown Upper School All Weather Sports Ground	n/s
Ferndown Upper School MUGA	n/s
Parley First School Playing Fields	n/s

No schools within Ferndown and West Parley were quality assessed. The playing fields at Ferndown Upper School are the only ones to have formal dual use agreements. They are managed by Ferndown Leisure Centre under a dual use arrangement and are well used and fully booked throughout the weekend.

All school sites should have a future role in providing for formal sport and recreation. School sites are generally of better quality, as they are secure and generally have some on site management presence in the form of caretakers or management.

## 3.0 SUMMARY OF ACCESSIBILITY TO OPEN SPACE

### 3.1 Overall access to open space

Section 5 of the report outlines access standards to different types of open space within the Local Need Area, a summary of the main standards is shown in Table 2:

**Table 2 Access standards for open space**

<b>Typology</b>	<b>Access Standard</b>
Recreation Grounds and Public Gardens	450 metres
Amenity Green Space	450 metres
Natural & Semi Natural Green space	600 metres
Space for Children	450 metres
Space for Young People	450 metres
Active Sports Space	600 Metres
Routeway/Green Corridor	n/a
Cemetery and churchyards	n/a
Allotments	n/a

The accompanying Maps show local access standards for the various typologies (i.e. Space for Children and Young People, Amenity Open Space, Natural and Semi Natural Green Space, Active Sports Space and Recreation Grounds and Public Gardens).

### 3.2 Access to different types of open space

Table 3 makes observations on access to different types of open space within the catchment area, using the adopted access standards, as shown in the accompanying maps.

**Table 3 Access to open space in the area**

<b>Typology</b>	<b>Provision against access standard</b>
Recreation Grounds and Public Gardens	Access standard not met; gaps throughout much of the LNA
Amenity Green Space	Access standard not met; gaps to the east and west of the LNA
Natural & Semi Natural Green Space	Good provision on outskirts of LNA – Access standard met
Space for Children	Access standard not met; gaps to the east and west of the LNA
Space for Young People	Access standard not met (see above)
Active Sports Space	Access standard not met
Routeway/Green Corridor	No standards set
Cemetery and churchyards	No standards set
Allotments	No standards set

## 4.0 FINDINGS FROM SURVEY AND CONSULTATION

### Citizen's Panel

93 people living in Ferndown and 22 people living in West Parley responded to the Citizen's Panel survey, and placed in the Central Settlements Sub Area (147 in total). This was the largest number of people responding from any one parish. People living in the Central Settlements are less frequent (compared to the district as a whole) visitors to children's play areas, recreation footpaths, country parks, other local countryside and woodland and spaces to enjoy nature and wildlife. Otherwise their behaviour tends to reflect that of the district as a whole.

The types of open space respondents would like to see more of in the Central Settlements Sub Area are children's play areas and space for teenagers

The most important attributes of open space are that they should be easy to get to, clean, and safe and secure. The most important facilities to have in nearby open space areas are: trees, dog bins, seats and facilities for teenagers. Two thirds of respondents would like to use open spaces near them more often: more information, new facilities with more suitable facilities and more spare time (nothing that the district council can do about this!) would be important in encouraging this.

### Local Areas of Open Space in Ferndown

The most commonly visited area of open space in Ferndown is King Georges Playing Fields. Other places mentioned included Ferndown Common and Forest; Heatherlands; Moors Valley, Slop Bog and Ferndown Leisure Centre. Areas outside the district commonly mentioned were Bournemouth sea front; the New Forest and the Poole, Purbeck, Sandbanks areas.

### Other Comments made by Ferndown Residents highlighted:

- Problems with teenagers: open spaces in the vicinity of Ferndown are frequently subject to abuse by teenagers and outlandish unacceptable "loutish behaviour". Another comment: I see little point in providing more open spaces and facilities for the public until vandalism is under control and we can see an improvement in social behaviour. Graffiti is quite common. Wish that 'disaffected teenage population' were given something to do in their spare time.
- Educate youngsters with regards towards destruction of wildlife and possible risk to human life when igniting our local heathlands. Possible visits to local upper/middle schools from fire brigade with stories and photographs of real incidents
- The recreation ground at Ford Lane, Tricketts Cross is neglected and sad. It desperately needs attention and updating. It hasn't changed in years and so is hardly ever used in an area which is relatively deprived and needy. It doesn't feel safe or secure.
- Cost of using Moors Valley: The Go Ape course at Moors Valley is much too expensive (this land is owned by EDDL and the Forestry Commission)

- I think it is very important to keep open spaces and parks in the local area for the benefit of everyone. More formal parks with floral displays (as in Christchurch and Bournemouth) would be nice and allotments would be good.
- More provision of "on road" cycle routes so that the above facilities can be redesigned with greater safety by both children and adults on bicycles and for pedestrians. Increasing facilities for making bicycles secure as all facilities - cycle parks.
- More advertising for hire of tennis courts for free or reduced for people on pension credit or low income.
- More open spaces in housing estates - grass areas with seats where local residents could sit out in fine weather without having to travel very far.
- We are fortunate in Ferndown to have excellent playing fields for Ferndown School - Heathland, Slop Bog to use with the dog.
- I think that Avon Heath Country Park is a bit scruffy, so I always use West Moors Plantation to walk and cycle in.

### Local Areas of Open Space in West Parley

Residents mentioned visiting Parley Common and Poor Common and Ferndown Leisure Centre. The Purbeck area, Highcliffe Beach and the New Forest were the most visited sites outside the district.

### Other Comments made by West Parley Residents highlighted:

- Basically both councils are to be commended on the facilities provided.
- I am not aware of a single flower bed or park in West Parley. I go for a walk in the woods at the end of my garden or down to Haskins Garden Centre. The area around Parley village hall is just a playing field and almost a mile away.
- Christchurch and Poole harbours are wonderful boating resources. A few places to moor a dingy and yacht for a quiet picnic, quiet drink or just admire the scenery would be very much appreciated.
- Reconsider covering every available space with houses and development as infrastructure is overloaded. As a result traffic is gridlocked, quality of life is lowered and services are overloaded. Everyone is getting frustrated.

### Summary of Provision

#### *Ferndown/King George V*

Within Ferndown, provision of play, teenage facilities and sport is concentrated around KGV Recreation Ground and the playing fields at Ferndown Upper School/Leisure Centre; these form a large 'strategic' area of recreational facilities, used seasonally for football and cricket, with tennis courts also and a bowls club.

The pitches at King George V sustain high levels of play, being the first choice for the Bournemouth Football League when organising fixtures.

At Ferndown Leisure Centre (dual use facilities on Ferndown Upper School site) there are 8 full size and 4 mini pitches which are fully booked at weekends with now 2 or 3 regular hirers on Saturdays which is increasing now that pitches are becoming

better maintained (Saturday league). Some training on Saturday mornings from juniors too. On Sundays, commonly 2 games on each pitch – Sunday league in morning, and juniors in afternoon. AFC Bournemouth also use the pitches using for training/matches U8s, 9s and 10s. Generally the pitches cope quite well.

School pupils use the facilities in the day, which is an issue when trying to develop concurrent use by the community.

#### *Other pitch facilities*

Ford Lane Recreation Ground in the far north east corner of the LNA has one pitch used by 3 teams and is bounded by semi-natural greenspace. The Local Plan contains proposals to upgrade and extend this.

West Parley's provision is similarly centred around one main area in the south, where Parley Sports Club and West Parley Recreation Ground lie adjacent to each other. Parley Sports Club has 3 adult and 1 junior/2 mini football pitches, home to two Saturday teams, various youth teams and a range of Sunday sides; Parley CC is also based here running a full complement of Saturday, Sunday, Midweek, friendly and colts sides. West Parley Recreation Ground is a less formal grassed recreation ground predominantly used for football (one junior/2 mini pitches – home to Parley Sports Rangers).

#### *Play Facilities*

First Class Nursery School cater for children in Ferndown, they are 11 to 15 minutes away from a play area. They believe there are enough facilities but would like to see more skateparks/bmx tracks and meeting points.

Pear Tree Montessori Nursery School cover Ferndown and West Parley and have identified there is a need for more tennis courts and 5 aside football pitches. Ferndown Community Pre School who cater for children in Ferndown and Tricketts Cross have identified there are not enough parks, play areas, skateboard parks or outdoor sports facilities and would like to see more play areas and places to sit.

Ickle Angels Day Nursery covers Ferndown and West Moors. They identified there were a lack of parks and play areas and would like to see more adventure play areas and nature sites. They believe Moors Valley Country Park is popular as it has a wide range of activities available. It would be helpful to have toilets at the local park at Ferndown. It is good to have an open area where the children can run around, also safe swings, slides etc.

Ferndown Area Youth & Community Centre would like to see more shelters, seating and meeting places, also cycle routes and nature sites.

#### *Parish Councils*

Ferndown Town Council identifies a need for more football pitches – teams are not well catered for with a shortage of football facilities and floodlit training areas. The parish would like to see an all weather pitch and MUGA.

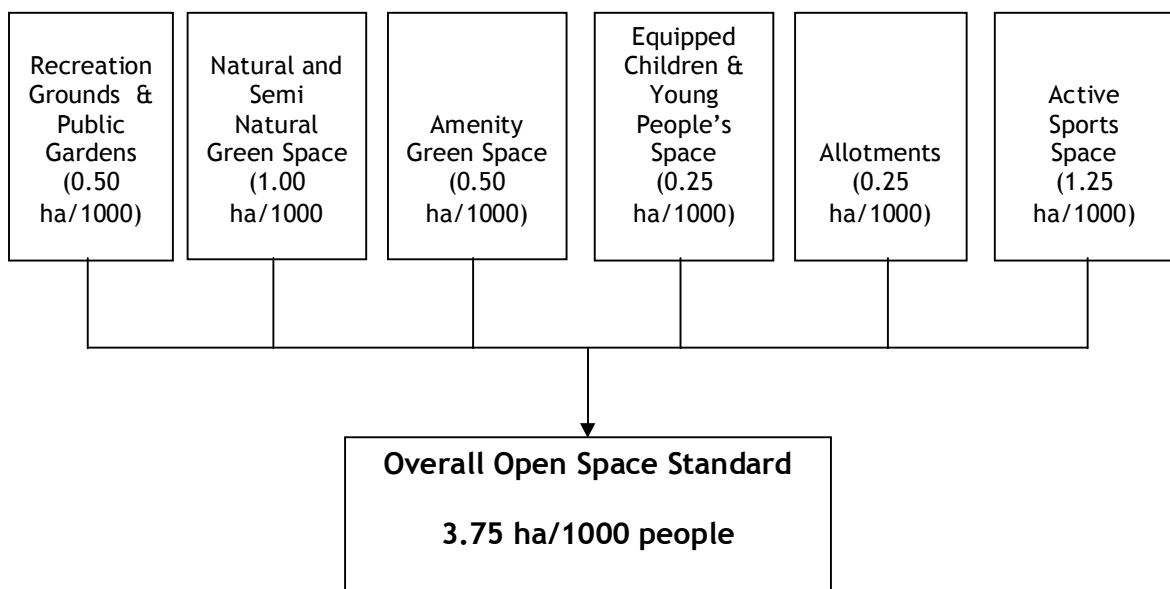
The most used open space in the parish is the King George Playing Fields which are maintained by Ferndown Town Council, along with Ford Lane sports ground, employing 3 full time staff and 4 part-time staff.

West Parley Parish Council have identified the need for more tennis/netball courts and improved bowling facilities as older resident's needs are currently not being met. The Memorial Hall and Parley Sports Centre are used for recreational activities by the residents of West Parley. The most used area of open space is the recreation ground and children's play area which is in need of improvements; the council are responsible for these areas and employ contractors to do the maintenance.

## 5.0 QUANTITY OF OPEN SPACE

### 5.1 Quantity standards for open space

Section 5 of the report outlines the quantity standards for open space within the District; a summary of these draft minimum standards is shown below:



### 5.2 Quantities of different types of open space

These standards have been applied at a local level to determine the provision of different types of open space across the adopted minimum standard, this is summarised in table 4 which shows:

- the existing quantity of open space (existing provision);
- the required quantity of open space for the population of the area (required provision);
- the surplus or deficiency of open space (in m<sup>2</sup> and acres);
- Supply against the standard.

**Table 4 Quantities of open space within the area -  
FERNDOWN AND WEST PARLEY (Pop. 16,664)**

<b>Typology</b>	<b>Existing provision (m<sup>2</sup>)</b>	<b>Required provision (m<sup>2</sup>)</b>	<b>Area of open space above/below the recommended minimum level of provision (m<sup>2</sup>) / (ha)</b>
<b>Recreation Grounds &amp; Public Gardens</b>	106060	83320	22740m / 2.3ha
<b>Natural and Semi Natural Green Space</b>	3938011	166640	3771371m / 377ha
<b>Active Sports Space</b>	5745	208300	-202555m / -20.26ha
<b>**Ferndown Leisure Centre</b>	Approx 50000		5560m / 0.55ha
<b>Space for Children &amp; Young People</b>	9878	41660	-31782/-3.2ha
<b>Amenity Green Space</b>	102311	83320	18991m / 1.9ha
<b>Allotments</b>	0	41660	-41660 / -4.17ha

\*\*With the addition of the pitches at Ferndown Leisure Centre, the existing level of provision within Ferndown and West Parley rises to around 1.03ha/1000.

### **5.3 Key Points: Quantitative Provision of Open Space in Ferndown and West Parley**

The Ferndown and West Parley LNA is just about adequately provided for in quantitative terms by Recreation Grounds and Amenity Green Space, but has insufficient Space for Children and Young People, Allotments and Active Sports Spaces (although the recreation space at West Parley's Sports Field and Recreation Ground are used for Active Sports regularly).

## **6.0 ISSUES ARISING IN FERNDOWN AND WEST PARLEY**

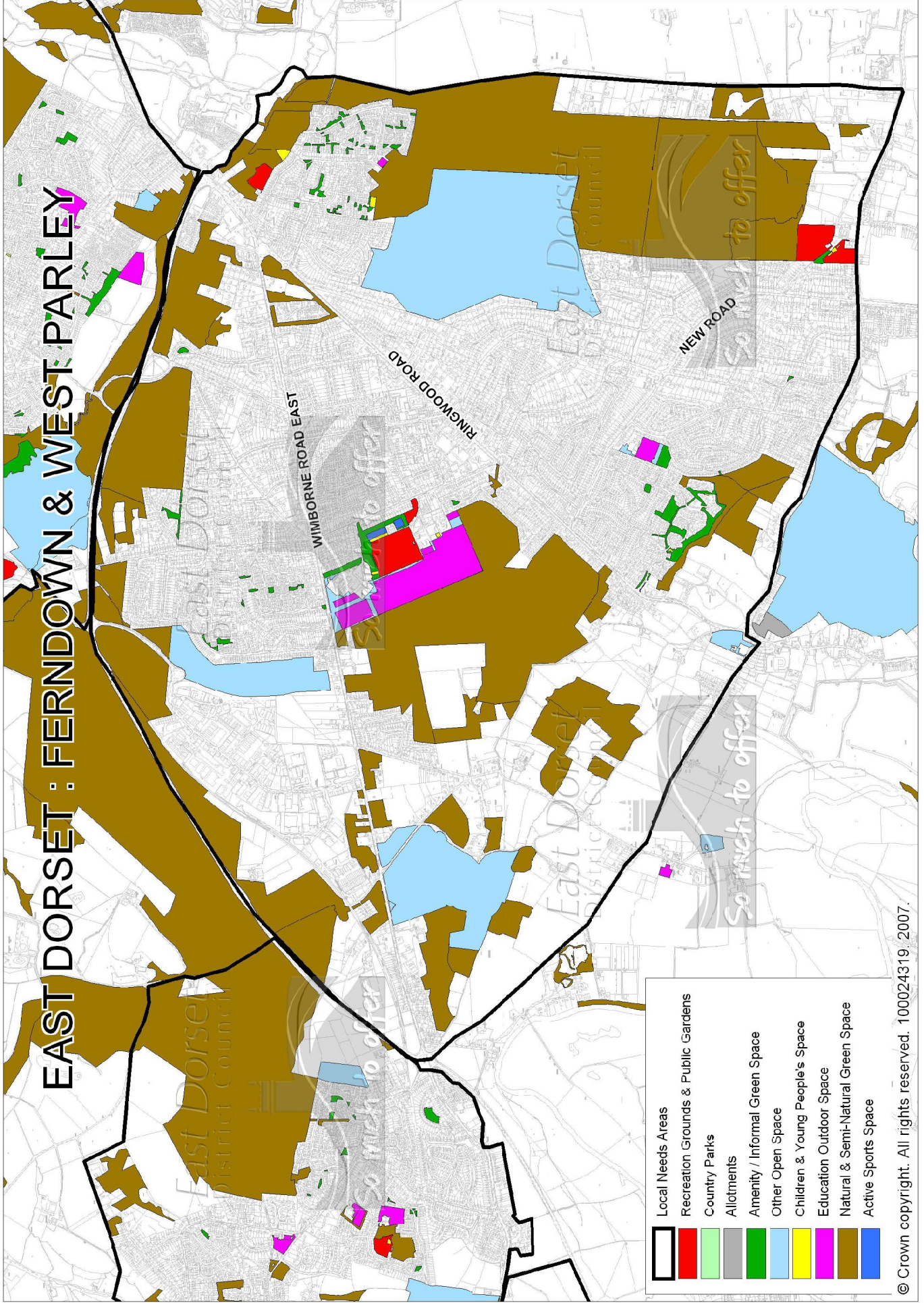
- Ferndown and West Parley is the largest LNA and the main urban settlement within East Dorset. From a formal open space typology perspective, the issue is that there are three main centres of provision:
  - Ferndown Leisure Centre/Upper School/King George V Playing Fields
  - Ford Lane Recreation Ground
  - West Parley Recreation Ground and Parley Sports Club.
- This concentration of facilities - even allowing for different catchment areas and some degree of overlap between Recreation Grounds, play facilities and active sports sites – means that substantial parts of built up central Ferndown lie outside

the accessible distances, and there is not the coverage of amenity open spaces either here to meet even the most basic open space needs.

- The Bournemouth Football League is very successful and the Ferndown pitches are under pressure catering for the demand; it is difficult to assess how many additional football pitches are required, especially as that for the Bournemouth League teams there is some degree of substitutability between pitches in Bournemouth, Christchurch and outlying areas – Bournemouth Sports Club, Parley Sports Club and pitches in Ferndown and West Moors. (At a conservative assessment, probably around 6-8 senior and 6+ junior/mini across the area as a whole)
- With the demographic profile of Ferndown with large numbers of children and teenagers, the existing open space resources are under severe pressure; transport into Poole and Bournemouth is not cheap or regular for youngsters and therefore the facilities are under pressure too.
- A floodlit all weather surface would be a welcome addition to facilities for training purposes to take pressure away from the grassed fields. This is mentioned by the Leisure Centre, Parish Council and clubs in the area.
- Additional smaller multi use games areas would also be useful as youth facilities.
- Because of the use sustained by the play and teenage facilities (skate park) at King George V, it is important that there are adequate resources to maintain these.
- West Parley Parish Council have identified the need for more tennis/netball courts and improved bowling facilities as older resident's needs are currently not being met.
- The planned improvements to Ford Lane Recreation Ground are welcomed .
- Again, in a dense urban area, attention to maximising the use of smaller green areas and improving links between open spaces and schools by cycleways and footpaths will go some way to improving accessibility.
- Across the District, provision of allotments is low and many LNAs have no allotment sites. As set out in Section 5, this Report recommends a new look at the burgeoning interest in allotment gardening, and how new sites can be brought into use to cater for growing demand.



# EAST DORSET : FERNDOWN & WEST PARLEY



Local Needs Areas	
	Recreation Grounds & Public Gardens
	Country Parks
	Allotments
	Amenity / Informal Green Space
	Other Open Space
	Children & Young People's Space
	Education Outdoor Space
	Natural & Semi-Natural Green Space
	Active Sports Space