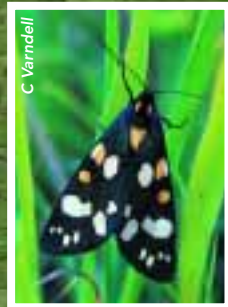


FROME VALLEY TRAIL



Evershot – Maiden Newton

- Car park: Evershot Village Hall
Grid ref: (ST) 5759 0465 (OS Explorer 117)
Local transport: Bus: contact Traveline
Distance: 5.3 miles (8.5 km)
Average time: 2 hours 30 minutes
Degree of difficulty: Moderate/easy - all gates (no stiles)
Countryside type: Downland, riverbank, watermeadows, woodland fringe
Refreshments: Evershot, Cattistock, Maiden Newton





Dorset County Council working in partnership
Access · Conservation · Information · Recreation · Tourism

Contact:

Frome Valley Project
Dorset Countryside Ranger Service
The Barracks
Bridport Road
Dorchester
DT1 1RN

Tel: 01305 224214

email: dorsetrangers@dorsetcc.gov.uk

www.dorsetforyou.com

Leaflet Sales

Environment Services
Dorset County Council
County Hall
Colliton Park
Dorchester DT1 1XJ
Tel: 01305 224214

This leaflet has been produced with sponsorship from the following organisations:



Photography by

C Vardell,

Text and photography

by J Penney, Dorset

Countryside Officer

Design by J Penney

and Dorset Design

dd02821



Recycled paper



Evershot is the second highest village in Dorset at about 700' above sea level. Its name derives from the Anglo Saxon words for wildboar, *edfor*, and *holt*, meaning thicket. So watch out for the wildboar!

Enjoy the classic chalk downland from here, across traditionally farmed landscape. At Chantmarle the magnificent Hamstone house was built in 1612 and intriguingly, has its own resident ghost!

If the river is in flood by the time you reach Sandhills, take the alternative dry route along the road through Cattistock. At Chilfrome link with the Wessex Ridgeway and pass the delightful Church of the Holy Trinity. The site has "enjoyed uninterrupted worship for more than 7 Centuries". In early spring, snowdrops can be seen growing in profusion amongst the grass.

Although sheep are traditionally grazed on the downlands, we know that cows milk was taken every morning to Maiden Newton creamery by cart, and that there were 5 dairies at Chilfrome in 1851.

Approaching Maiden Newton you will see a difference in agricultural methods. Here are the remains of a 200 year old water meadows system. Water level was managed through an irrigation system that raised the temperature of the land early in the season ensuring a richer crop. Look out for the lilac field scabious or yellow marsh marigold seen amongst the grasses, which attract a variety of colourful insects including day time moth the scarlet tiger. In the chalk stream, the brown trout may be feeding off a variety of aquatic insects, while above, a kingfisher or perhaps a banded demoiselle may be spotted.

Enter the village of Maiden Newton and admire the old school clock opposite the post office. The clock was installed to celebrate Queen Victoria's Diamond Jubilee in 1871.