

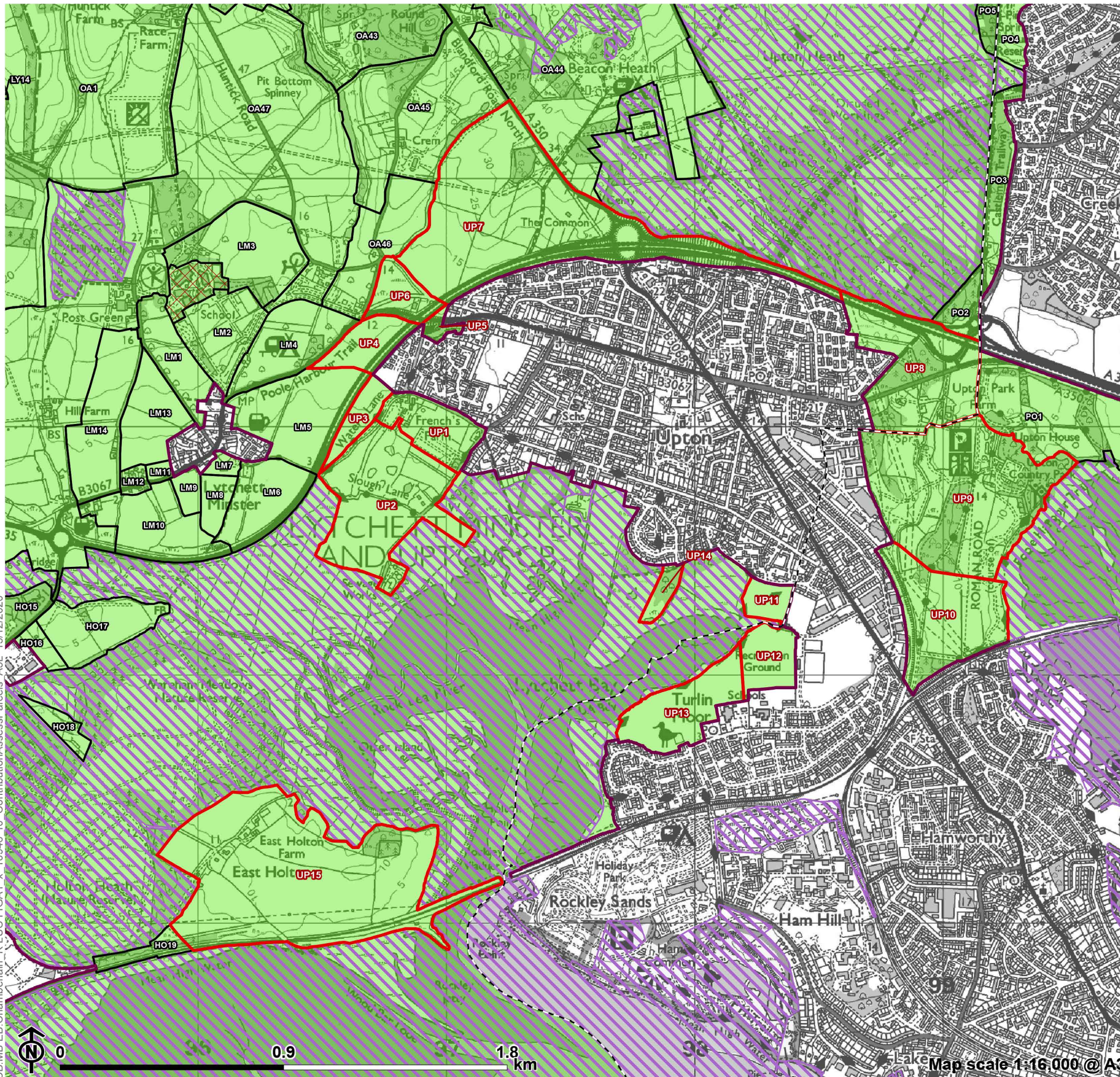
Appendix A

**Maps Showing Contribution
Assessment (for each purpose)
for Parcels around Inset
Settlements:
Upton & Hamworthy**

Figure A1.18

**Contribution Assessment Parcels:
Upton & Hamworthy**

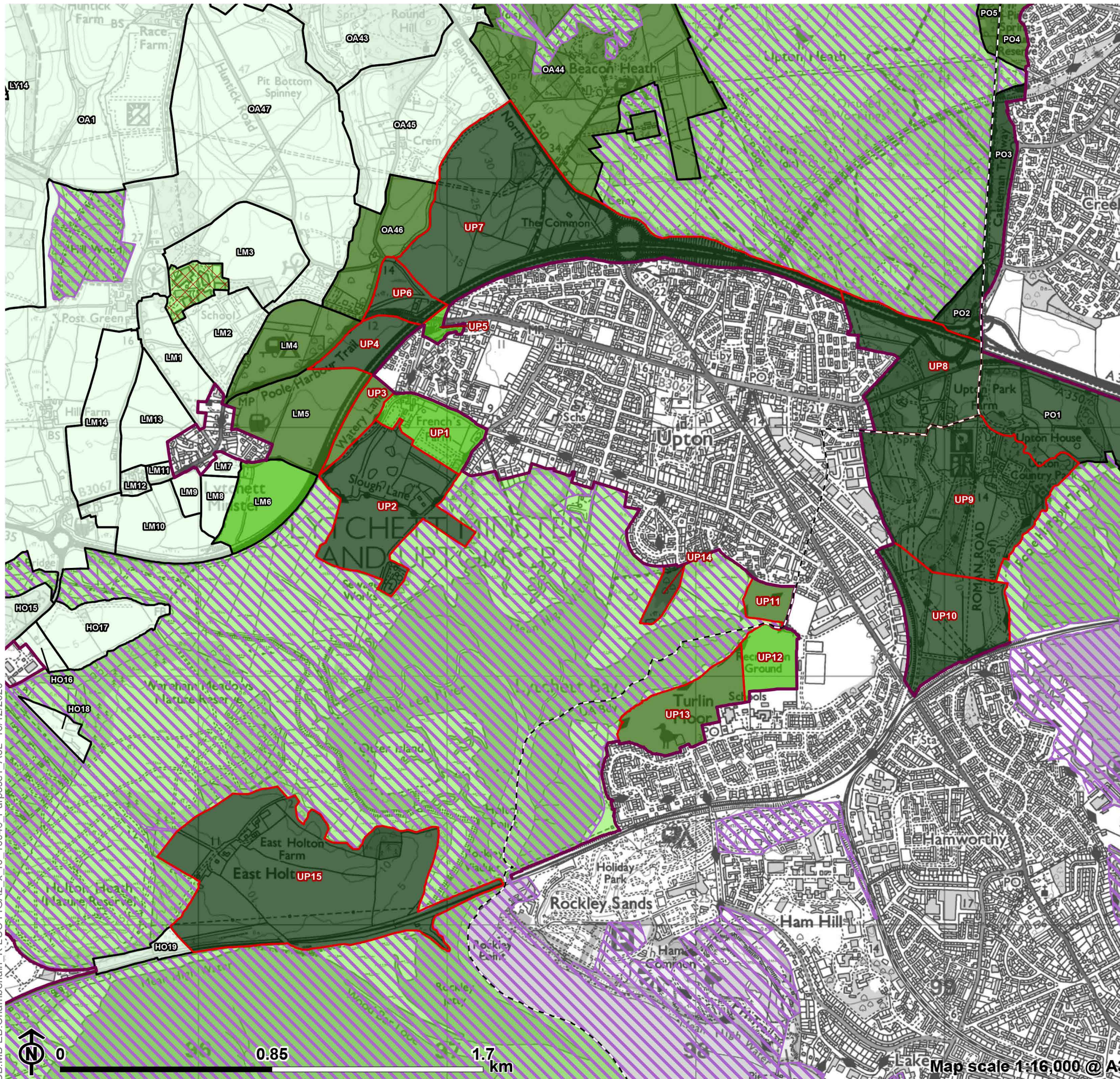
- Local Authority boundary
- Inset area
- Green Belt
- Upton & Hamworthy parcel
- Parcel
- No openness
- Absolute constraint(s)



CB:MB:EB:Chamberlain_K:LUC:FIGA1_x_10946_r0_ContributionAssessParcels_A3L_15/12/2020

Figure A2.18

**Green Belt Purpose 1 Contribution:
Upton & Hamworthy**



- - - Local Authority boundary
- Inset area
- Green Belt not assessed
- ▨ Absolute constraint(s)
- ▨ No openness
- ▭ Upton & Hamworthy parcel
- ▭ Parcel

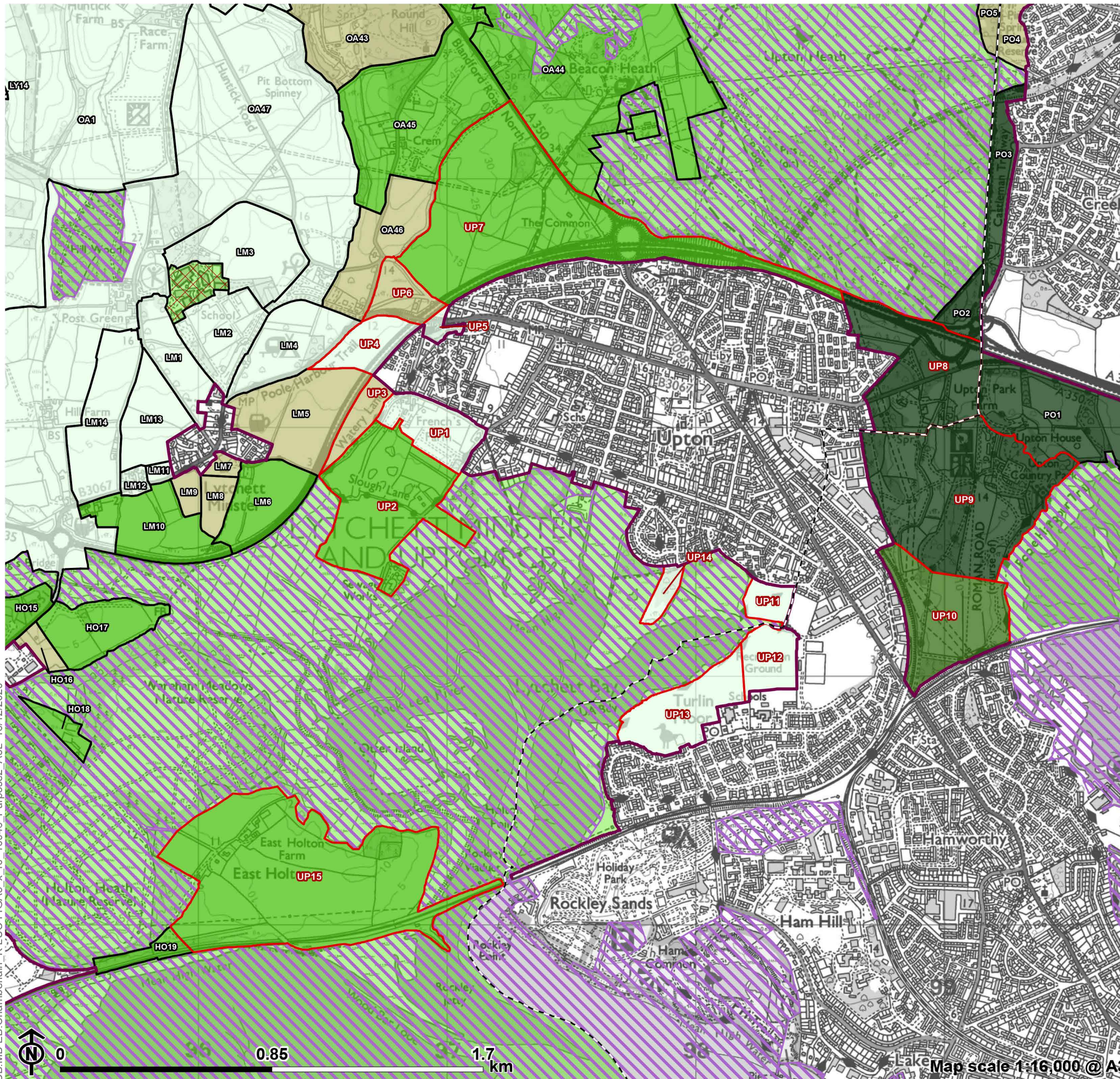
Purpose 1 contribution

- Strong
- Relatively strong
- Moderate
- Relatively weak
- Weak/No

CB:MB:EB:Chamberlain_K:LUC:FIGA2_x_r0_10946_Purpose1_A3L_15/12/2020

Figure A3.18

**Green Belt Purpose 2 Contribution:
Upton & Hamworthy**



- - - Local Authority boundary
- Inset area
- Green Belt not assessed
- Diagonal hatching Absolute constraint(s)
- Cross-hatching No openness
- Red outline Upton & Hamworthy parcel
- Black outline Parcel

Purpose 2 contribution

- Dark Green Strong
- Medium Green Relatively strong
- Light Green Moderate
- Yellowish Green Relatively weak
- White Weak/No

CB:MB:EB:Chamberlain_K:LUC:FIGA3_x_r0_10946_Purpose2_A3L_15/12/2020

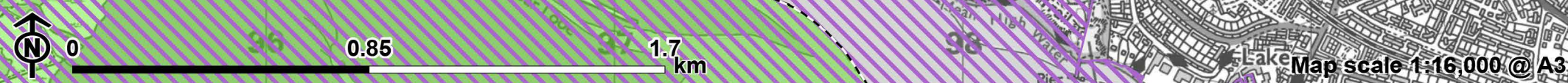
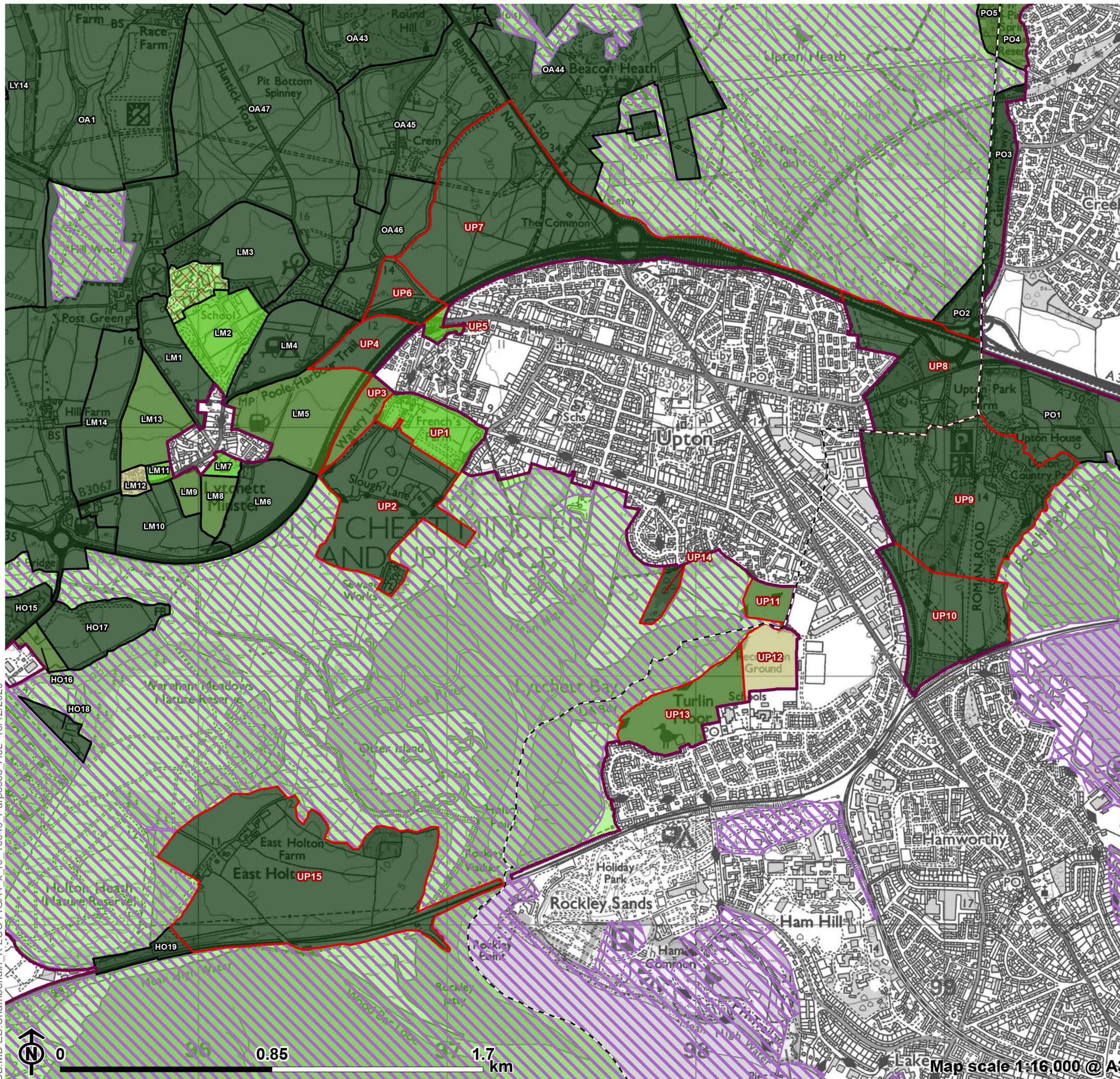


Figure A4.18

**Green Belt Purpose 3 Contribution:
Upton & Hamworthy**



- Local Authority boundary
- Inset area
- Green Belt not assessed
- Absolute constraint(s)
- No openness
- Upton & Hamworthy parcel
- Parcel

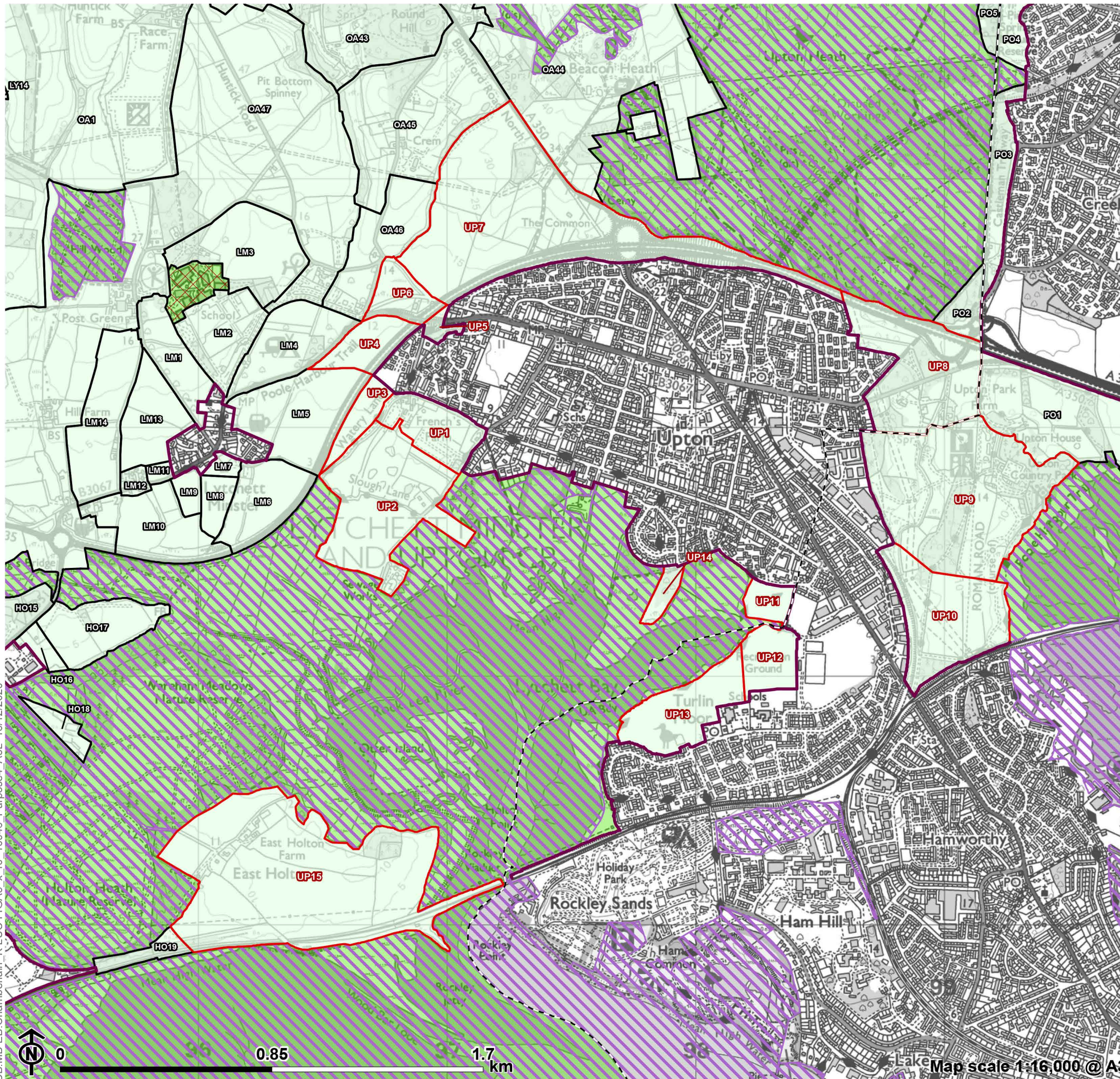
Purpose 3 contribution

- Strong
- Relatively strong
- Moderate
- Relatively weak
- Weak/No

CB:MB:EB:Chamberlain_K:LUC:FIGA4_x_r0_10946_Purpose3_A3L_15/12/2020

Figure A5.18

**Green Belt Purpose 4 Contribution:
Upton & Hamworthy**



- Local Authority boundary
- Inset area
- Green Belt not assessed
- Absolute constraint(s)
- No openness
- Upton & Hamworthy parcel
- Parcel

Purpose 4 contribution

- Strong
- Relatively strong
- Moderate
- Relatively weak
- Weak/No

CB:MB EB:Chamberlain_K LUC FIGA5_x_r0_10946_Purpose4_A3L_15/12/2020