

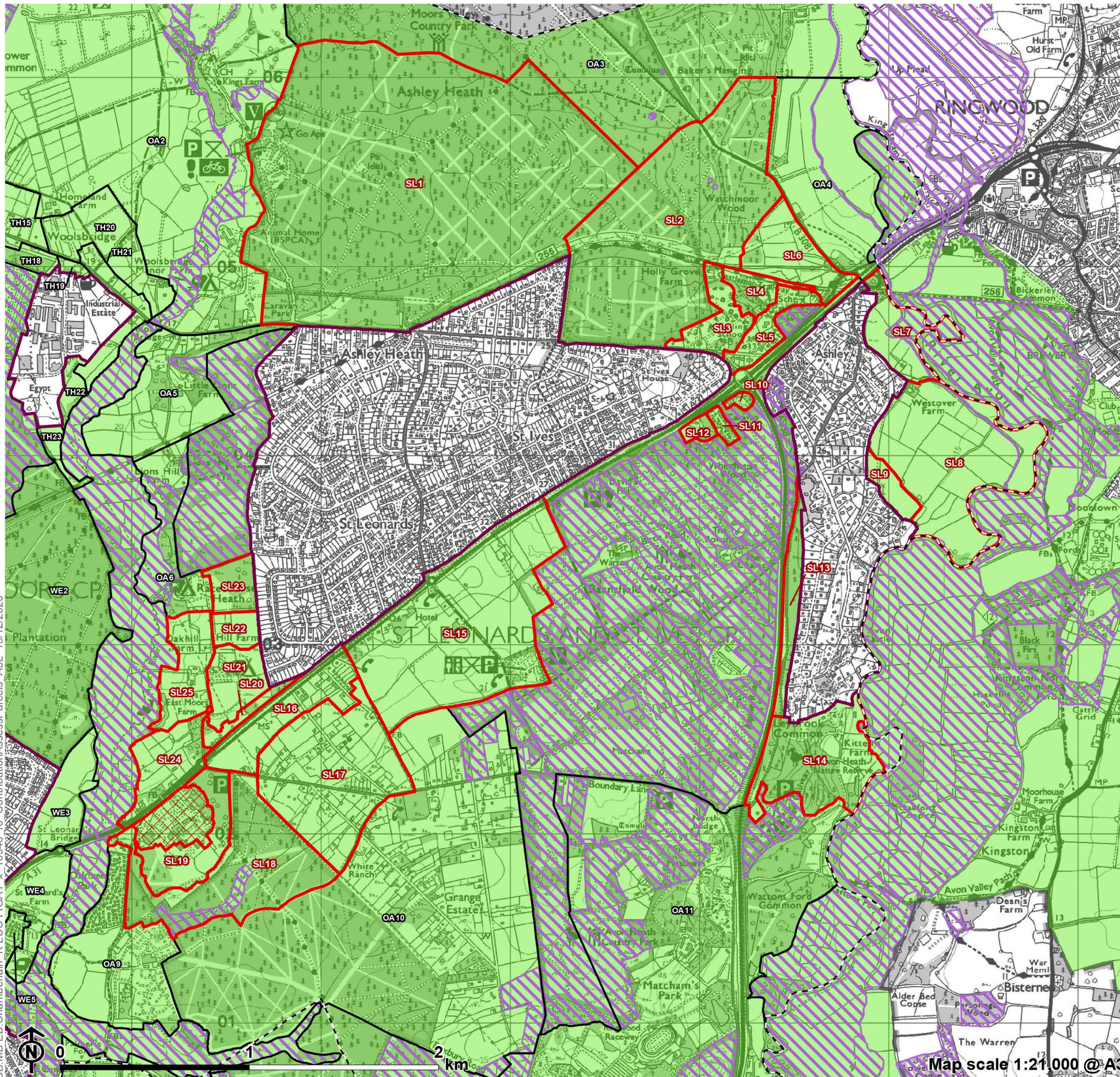
Appendix A

**Maps Showing Contribution
Assessment (for each purpose)
for Parcels around Inset
Settlements:
St Leonards and St Ives**

Figure A1.15

**Contribution Assessment Parcels:
St Leonards and St Ives**

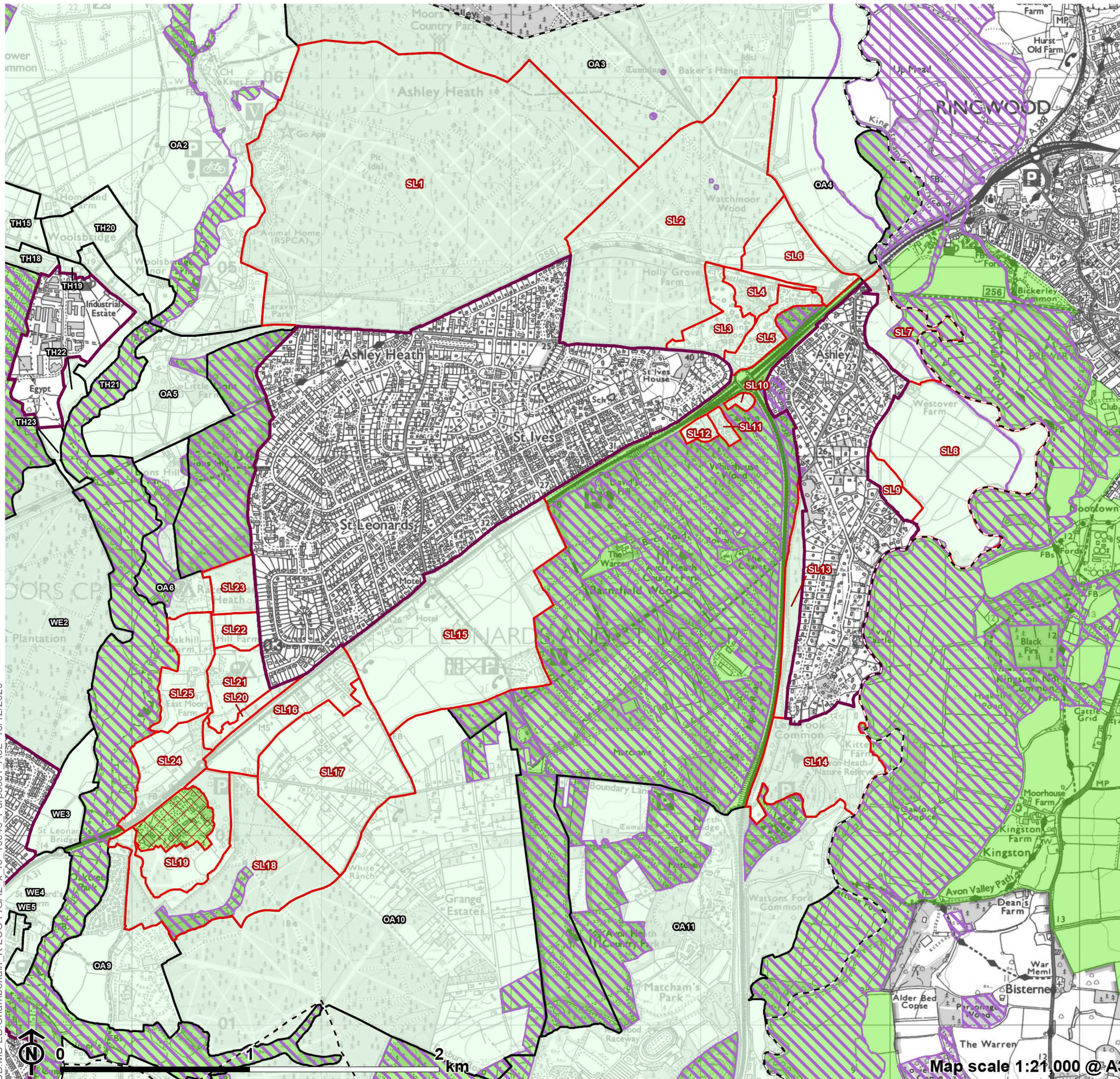
- Local Authority boundary
- Inset area
- Green Belt
- ▭ St Leonards and St Ives parcel
- ▭ Parcel
- ▨ No openness
- ▨ Absolute constraint(s)



CB:MB:EB:Chamberlain_K.LUC FIGA1_x_10946_r0_ContributionAssessParcels_A3L_15/12/2020

Figure A2.15

**Green Belt Purpose 1 Contribution:
St Leonards and St Ives**

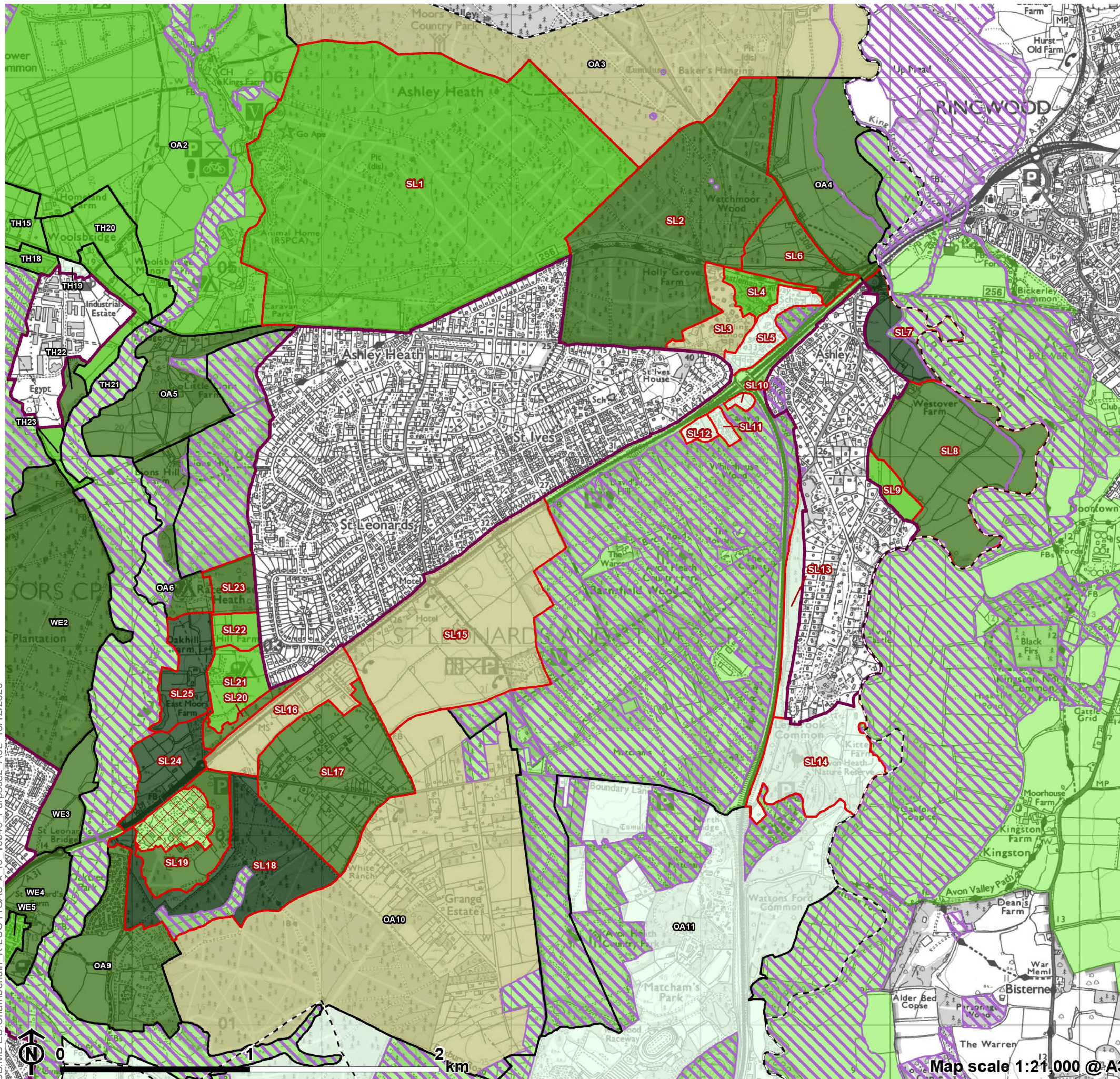


- Local Authority boundary
 - Inset area
 - Green Belt not assessed
 - Diagonal hatching Absolute constraint(s)
 - Red hatching No openness
 - Red outline St Leonards and St Ives parcel
 - Black outline Parcel
- Purpose 1 contribution**
- Dark Green Strong
 - Medium Green Relatively strong
 - Light Green Moderate
 - Yellowish Green Relatively weak
 - White Weak/No

CB:MB:EB:Chamberlain_K.LUC.FIG.A2_x_r0_10946_Purpose1_A3L_15/12/2020

Figure A3.15

**Green Belt Purpose 2 Contribution:
St Leonards and St Ives**

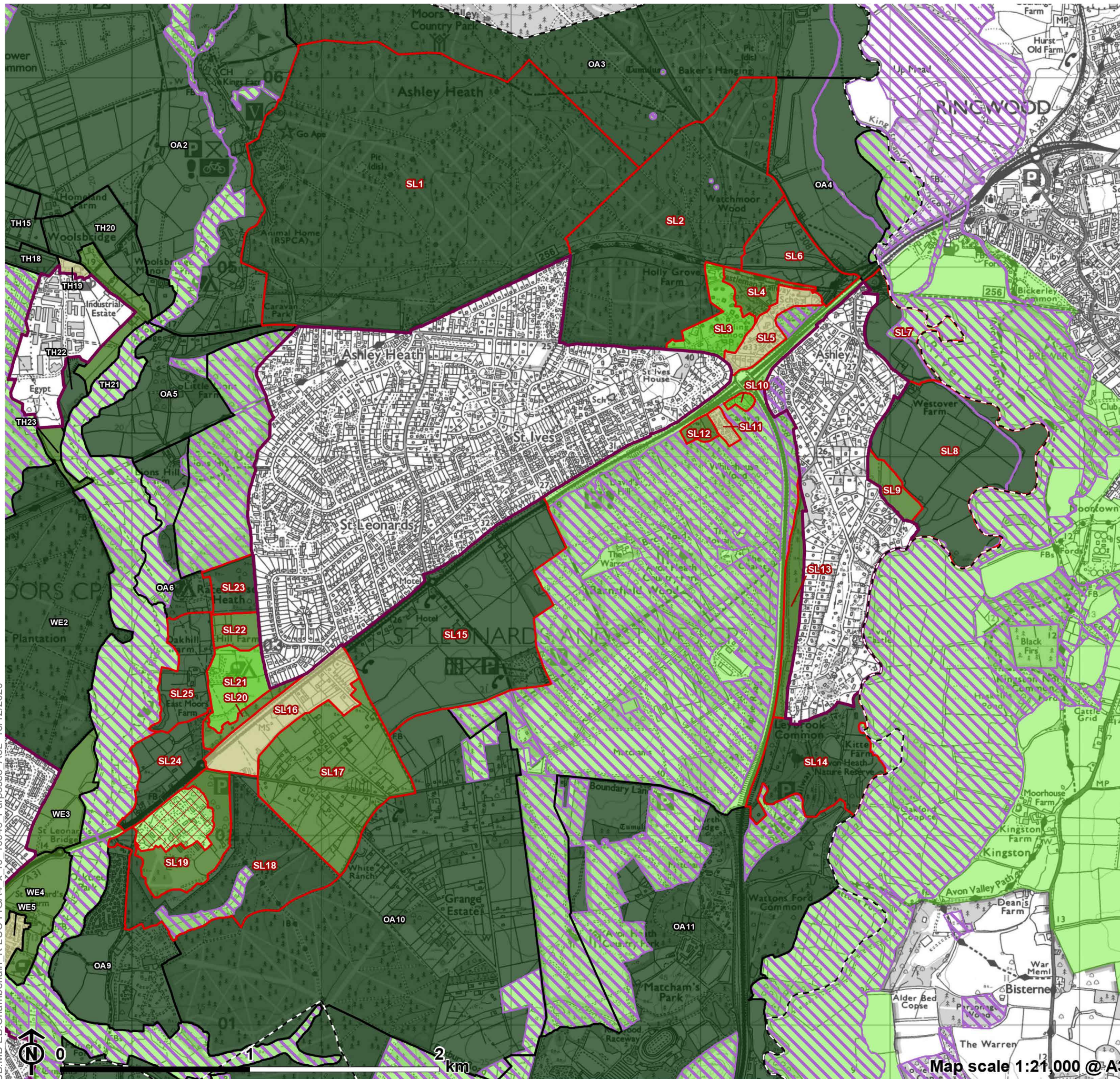


- Local Authority boundary
 - Inset area
 - Green Belt not assessed
 - Diagonal hatching Absolute constraint(s)
 - Red hatching No openness
 - Red outline St Leonards and St Ives parcel
 - Black outline Parcel
- Purpose 2 contribution**
- Dark Green Strong
 - Medium Green Relatively strong
 - Light Green Moderate
 - Yellowish Green Relatively weak
 - White Weak/No

CB:MB:EB:Chamberlain_K.LUC FIGA3_x_r0_10946_Purpose2_A3L_15/12/2020

Figure A4.15

**Green Belt Purpose 3 Contribution:
St Leonards and St Ives**

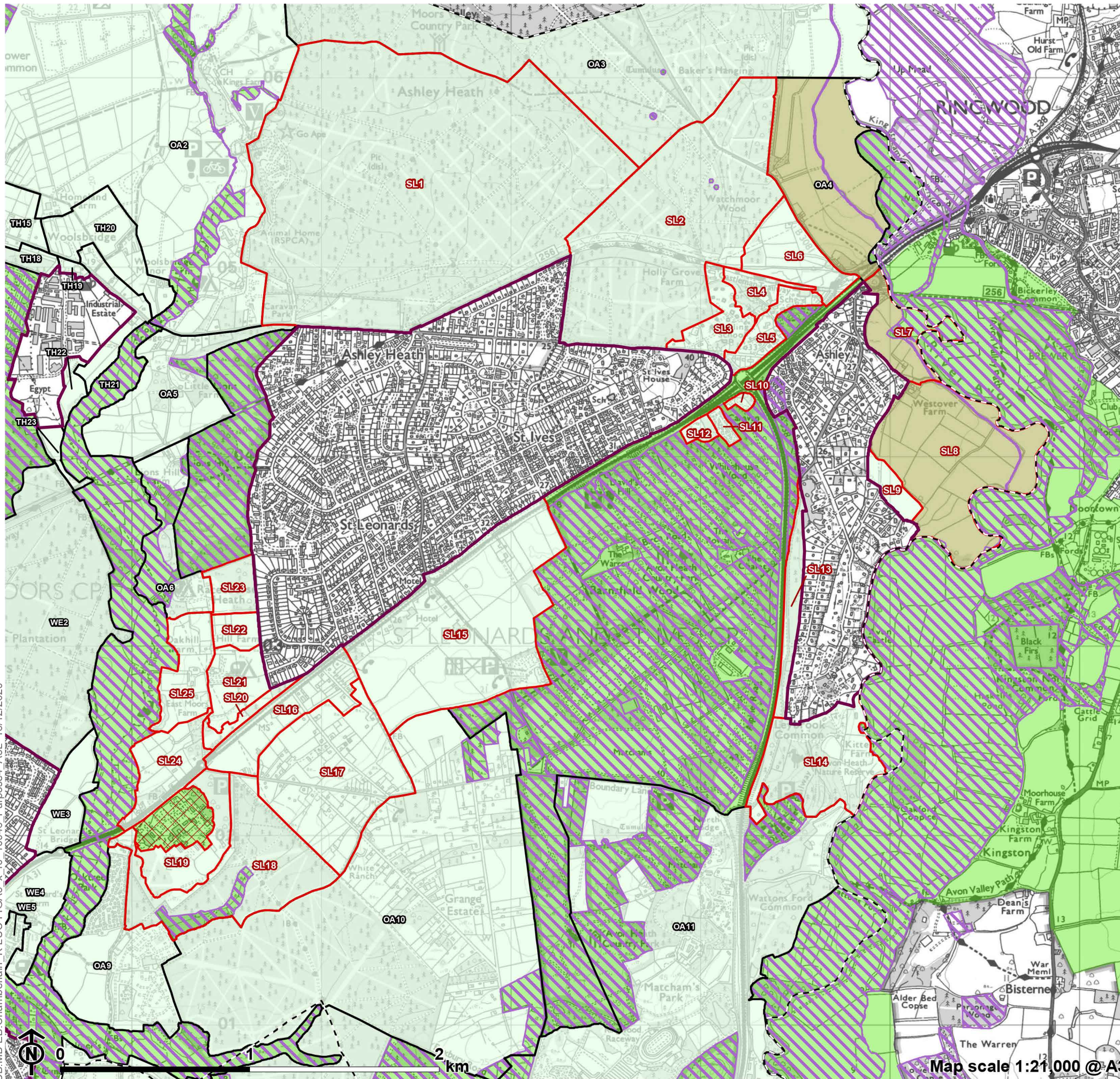


- Local Authority boundary
 - Inset area
 - Green Belt not assessed
 - Diagonal hatching Absolute constraint(s)
 - Red hatching No openness
 - Red outline St Leonards and St Ives parcel
 - Black outline Parcel
- Purpose 3 contribution**
- Dark Green Strong
 - Medium Green Relatively strong
 - Light Green Moderate
 - Yellowish Green Relatively weak
 - White Weak/No

CB:MB:EB:Chamberlain_K.LUC.FIG.A4.x_r0_10946_Purpose3_A3L_15/12/2020

Figure A5.15

**Green Belt Purpose 4 Contribution:
St Leonards and St Ives**



- Local Authority boundary
 - Inset area
 - Green Belt not assessed
 - ▨ Absolute constraint(s)
 - ▨ No openness
 - ▭ St Leonards and St Ives parcel
 - ▭ Parcel
- Purpose 4 contribution**
- Strong
 - Relatively strong
 - Moderate
 - Relatively weak
 - Weak/No

CB:MB:EB:Chamberlain_K.LUC.FIG.A5_x_r0_10946_Purpose4_A3L_15/12/2020