

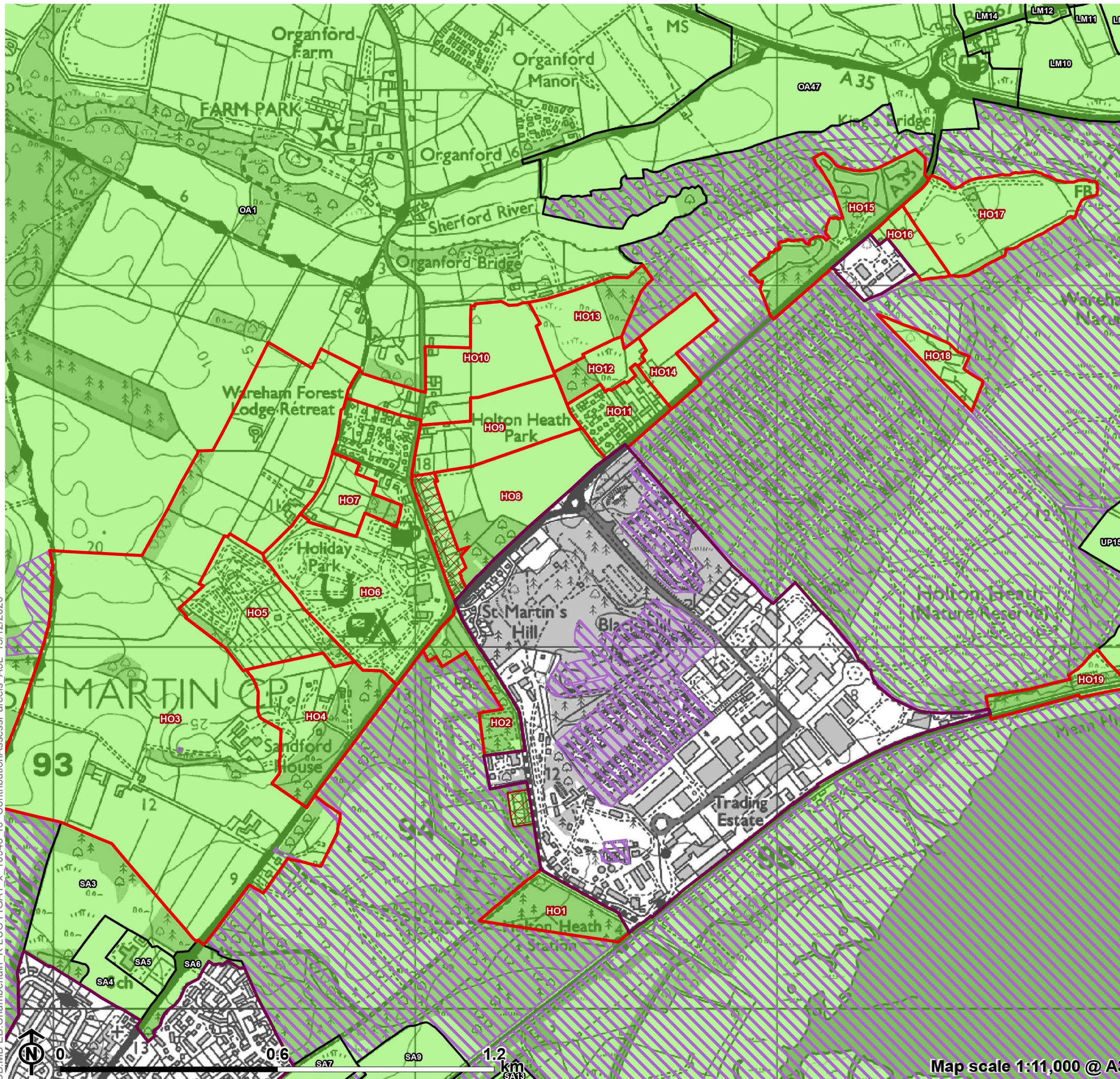
Appendix A

**Maps Showing Contribution
Assessment (for each purpose)
for Parcels around Inset
Settlements:
Holton Heath**

Figure A1.9

**Contribution Assessment Parcels:
Holton Heath**

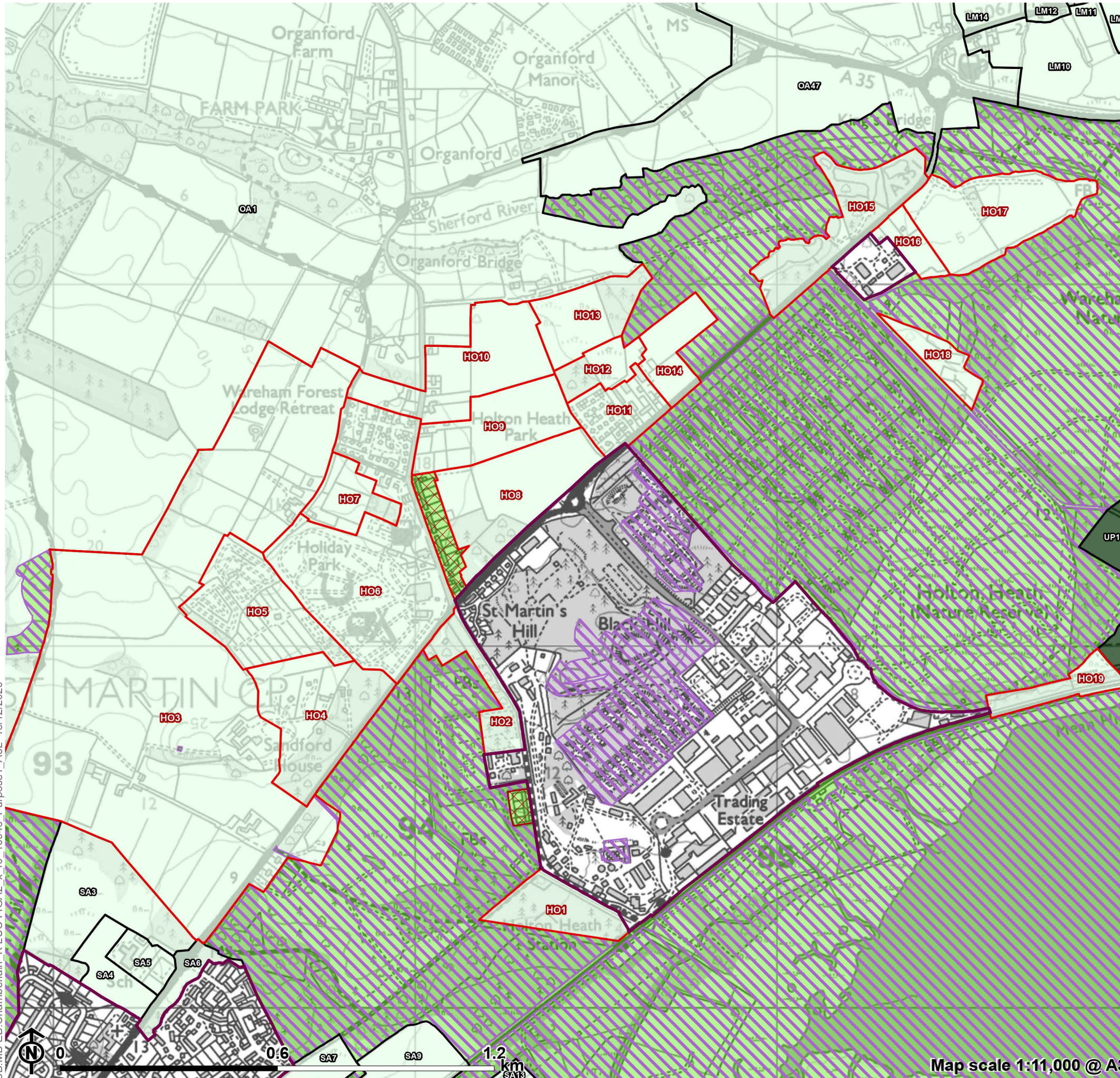
- Local Authority boundary
- Inset area
- Green Belt
- Red outline Holton Heath parcel
- Parcel
- No openness
- Absolute constraint(s)



CB:MB EB:Chamberlain_K LUC FIGA1_x_10946_r0 ContributionAssessParcels_A3L_15/12/2020

Figure A2.9

**Green Belt Purpose 1 Contribution:
Holton Heath**

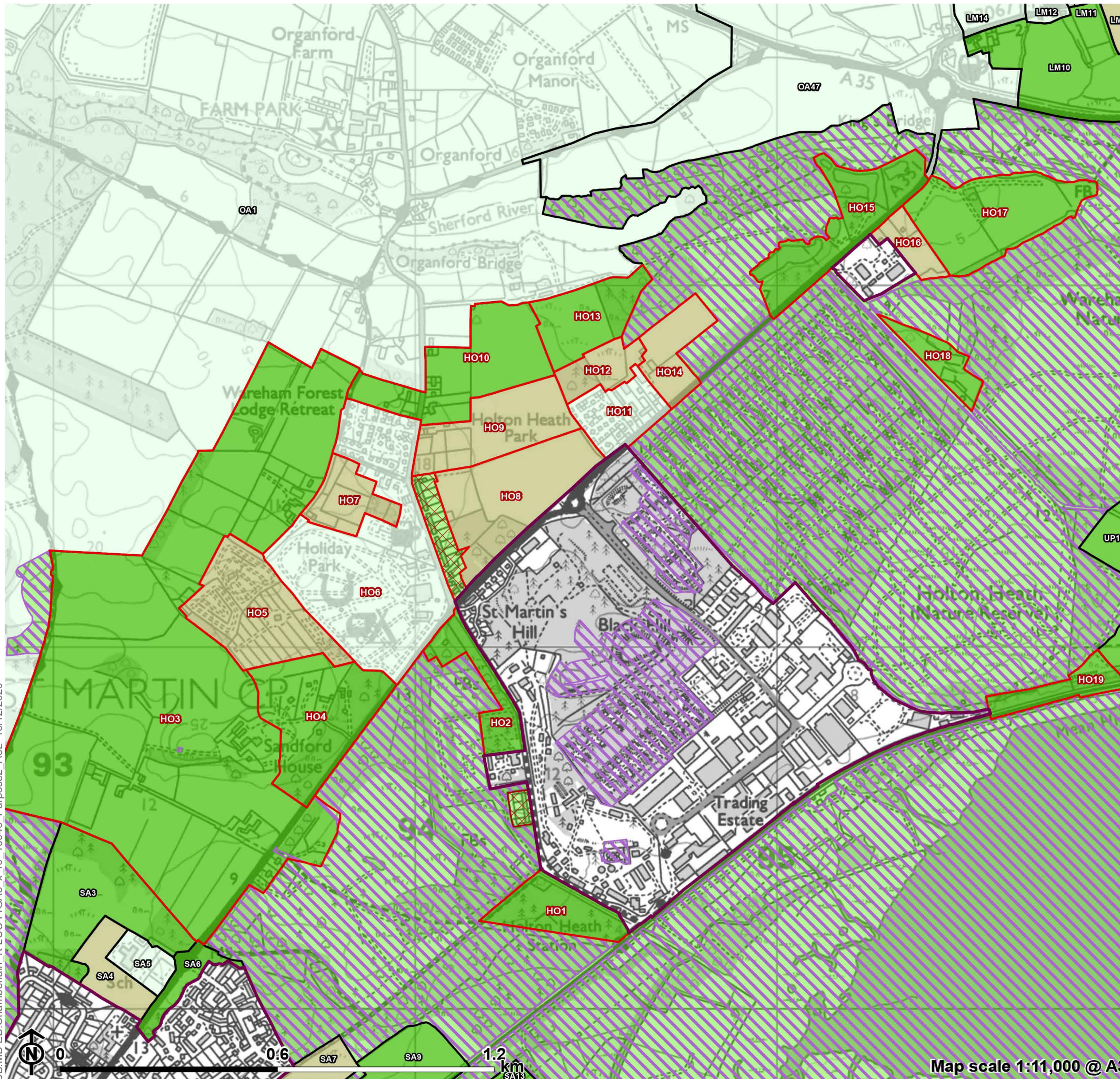


- Local Authority boundary
 - Inset area
 - Green Belt not assessed
 - Absolute constraint(s)
 - No openness
 - Holton Heath parcel
 - Parcel
- Purpose 1 contribution**
- Strong
 - Relatively strong
 - Moderate
 - Relatively weak
 - Weak/No

CB:MB EB:Chamberlain_K LUC FIGA2_x_r0_10946_Purpose1_A3L_15/12/2020

Figure A3.9

**Green Belt Purpose 2 Contribution:
Holton Heath**

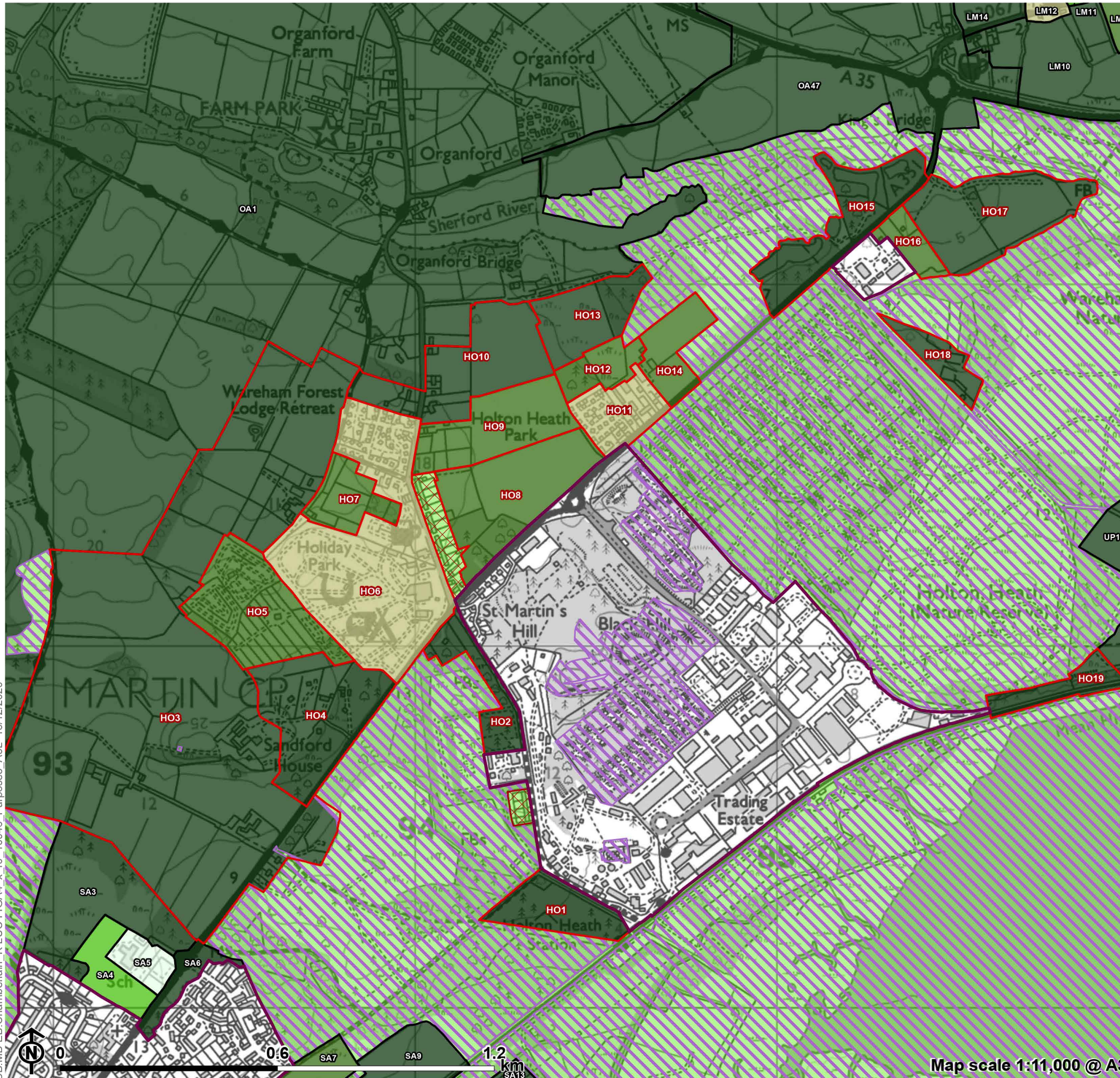


- - - - Local Authority boundary
 - Inset area
 - Green Belt not assessed
 - Diagonal hatching Absolute constraint(s)
 - Cross-hatching No openness
 - Red outline Holton Heath parcel
 - Black outline Parcel
- Purpose 2 contribution**
- Dark green Strong
 - Medium green Relatively strong
 - Light green Moderate
 - Tan Relatively weak
 - White Weak/No

CB:MB EB:Chamberlain_K LUC FIGA3_x_r0_10946_Purpose2_A3L_15/12/2020

Figure A4.9

**Green Belt Purpose 3 Contribution:
Holton Heath**

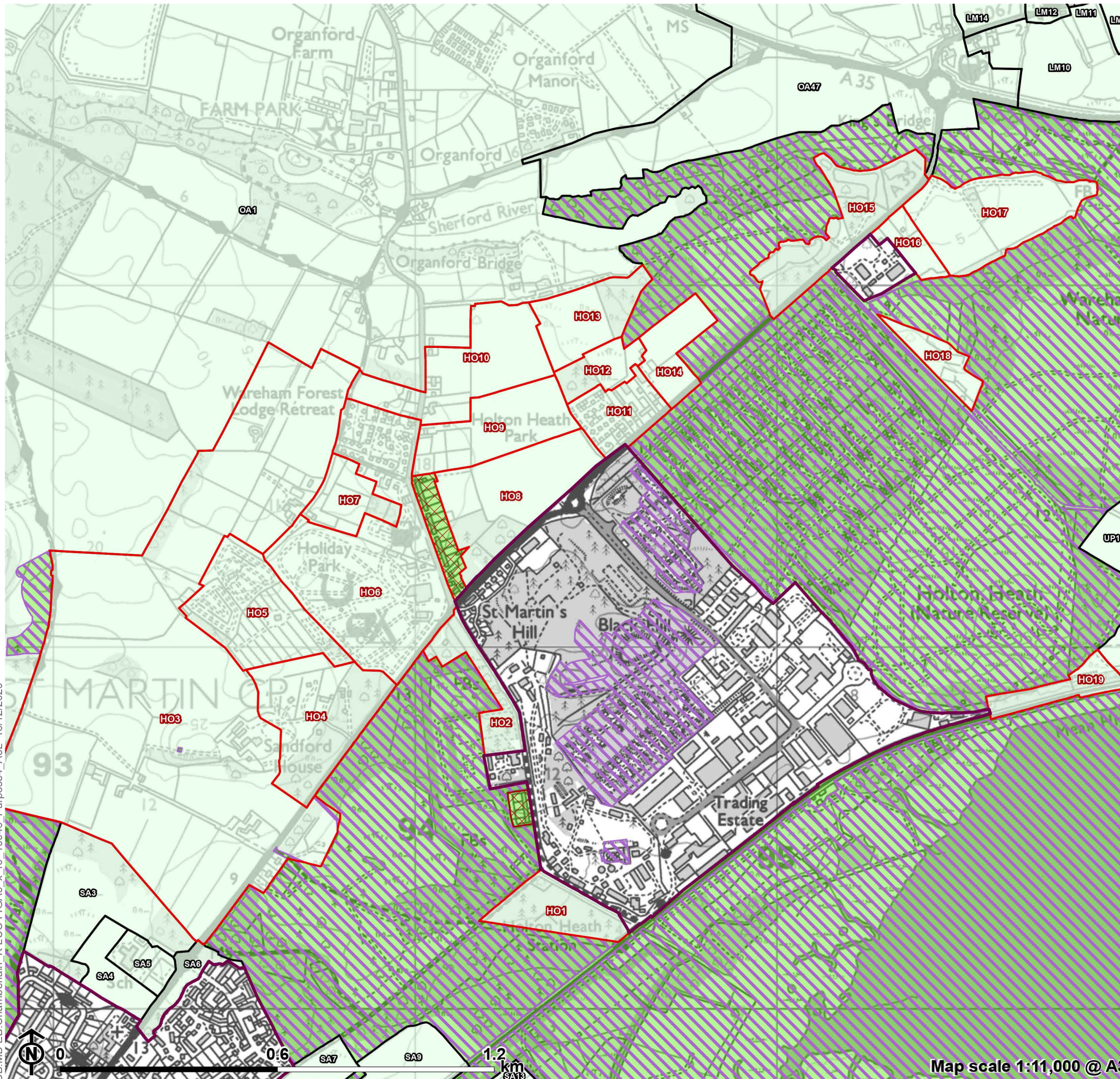


- Local Authority boundary
 - Inset area
 - Green Belt not assessed
 - Absolute constraint(s)
 - No openness
 - Holton Heath parcel
 - Parcel
- Purpose 3 contribution**
- Strong
 - Relatively strong
 - Moderate
 - Relatively weak
 - Weak/No

CB:MB:EB:Chamberlain_K LUC FIGA4_x_r0_10946_Purpose3_A3L_15/12/2020

Figure A5.9

**Green Belt Purpose 4 Contribution:
Holton Heath**



- - - - Local Authority boundary
 - Inset area
 - Green Belt not assessed
 - Absolute constraint(s)
 - No openness
 - Holton Heath parcel
 - Parcel
- Purpose 4 contribution**
- Strong
 - Relatively strong
 - Moderate
 - Relatively weak
 - Weak/No

CB:MB EB:Chamberlain_K LUC FIGA5_x_r0_10946_Purpose4_A3L_15/12/2020