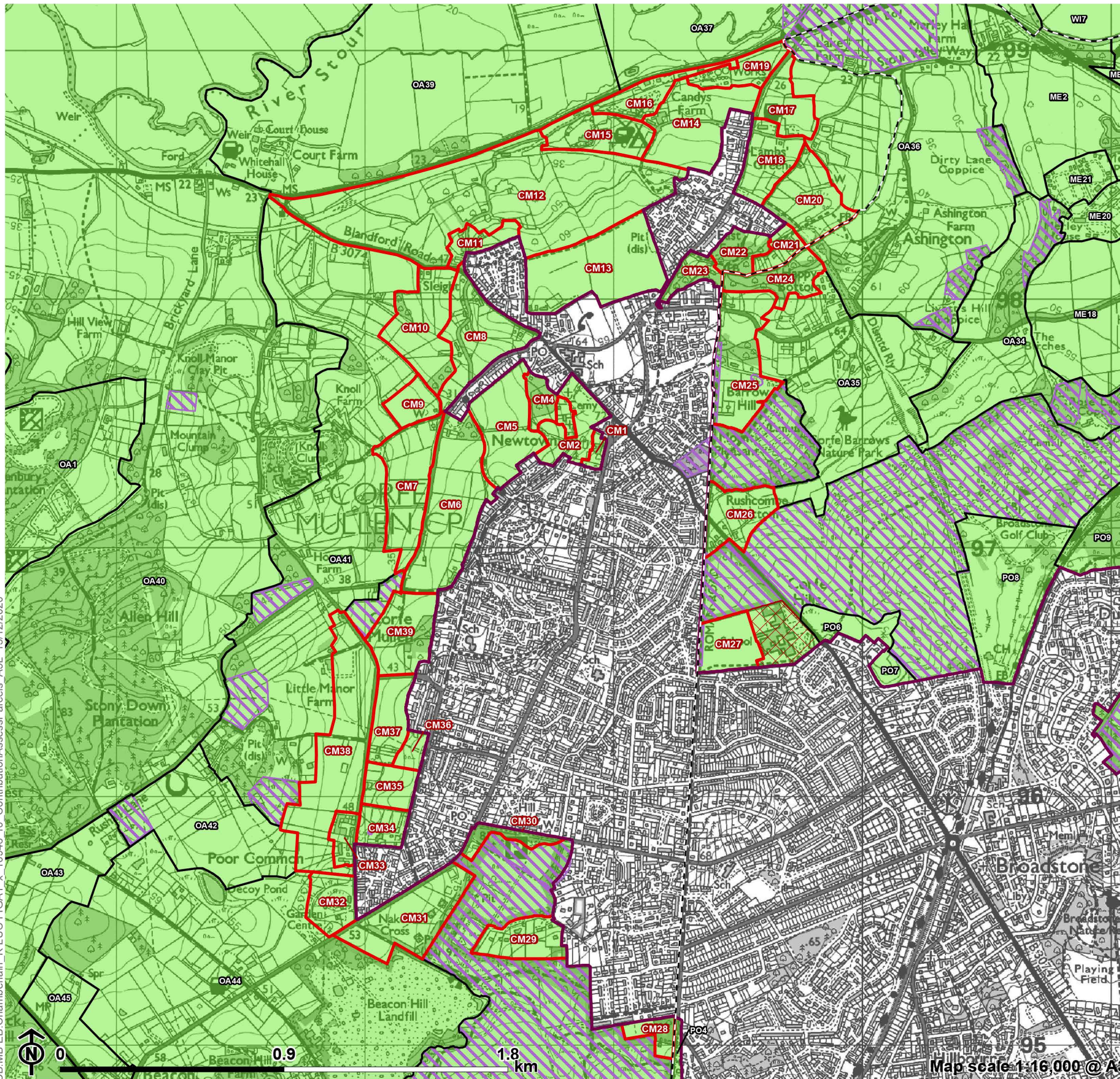


Appendix A

**Maps Showing Contribution
Assessment (for each purpose)
for Parcels around Inset
Settlements:
Corfe Mullen**

Figure A1.7

**Contribution Assessment Parcels:
Corfe Mullen**

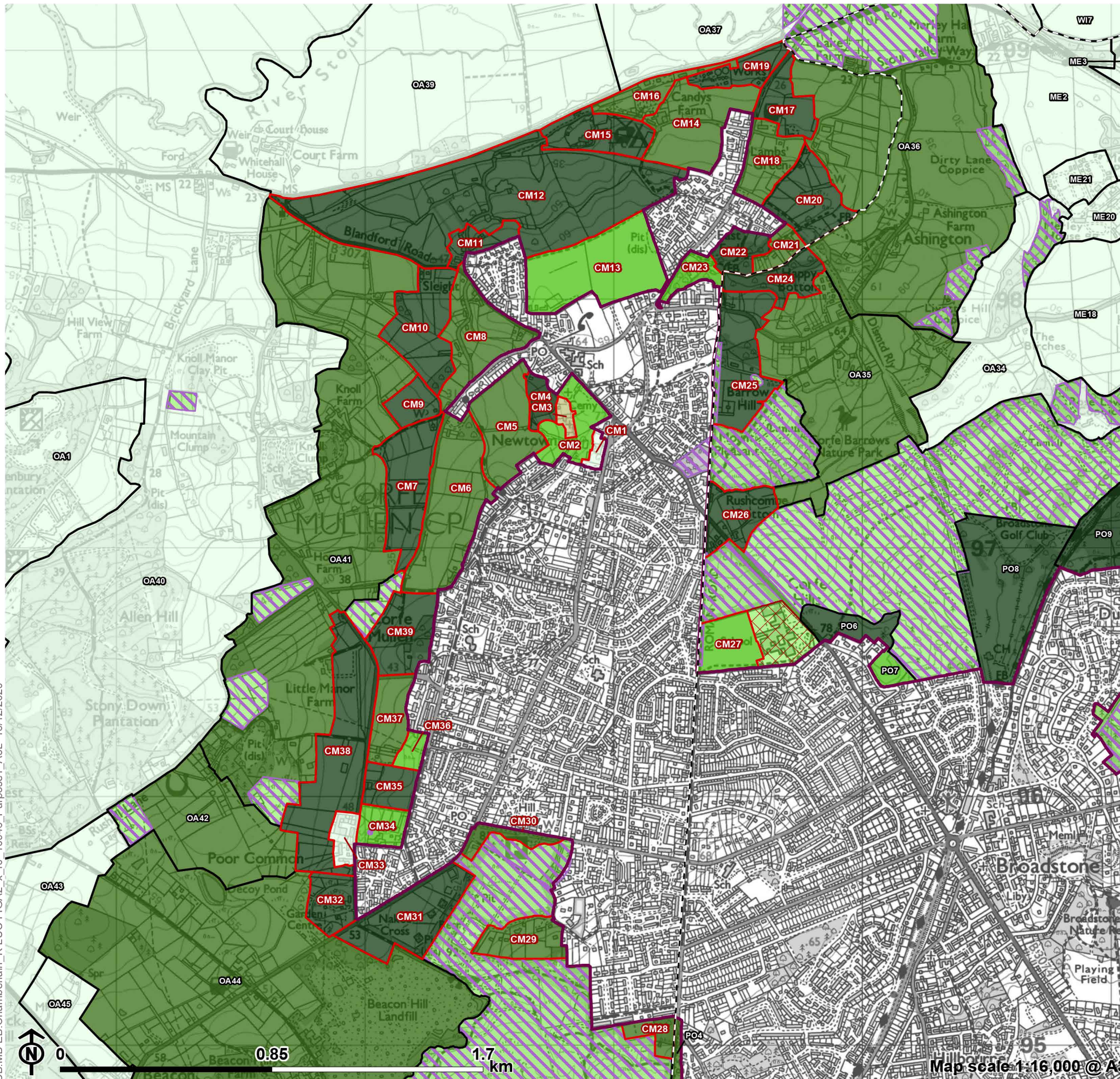


- Local Authority boundary
- Inset area
- Green Belt
- Corfe Mullen parcel
- Parcel
- No openness
- Absolute constraint(s)

CB:MB:EB:Chamberlain_K LUC FIGA1_x_10946_r0 ContributionAssessParcels_A3L_15/12/2020

Figure A2.7

**Green Belt Purpose 1 Contribution:
Corfe Mullen**

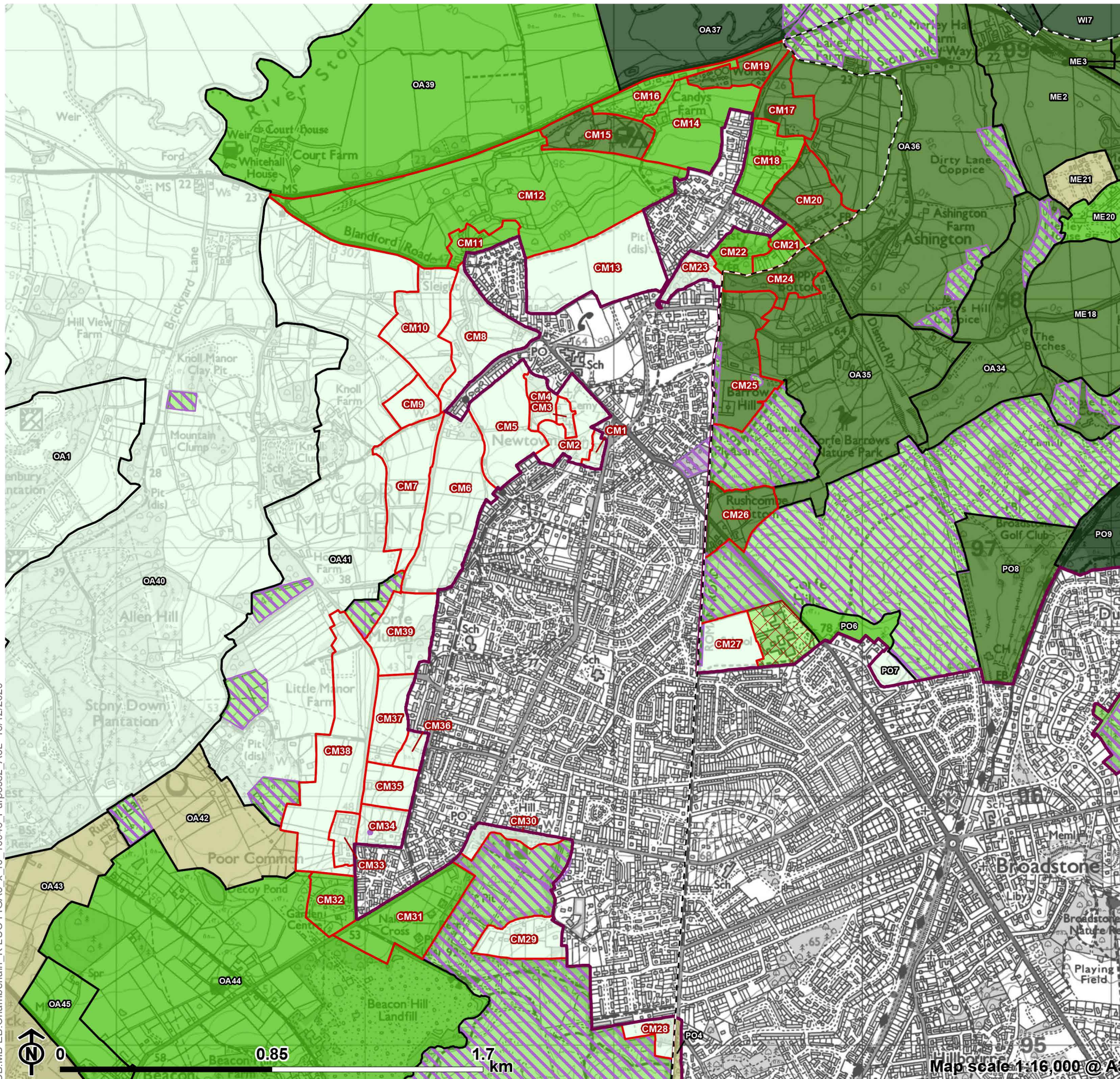


- Local Authority boundary
 - Inset area
 - Green Belt not assessed
 - Absolute constraint(s)
 - No openness
 - Corfe Mullen parcel
 - Parcel
- Purpose 1 contribution**
- Strong
 - Relatively strong
 - Moderate
 - Relatively weak
 - Weak/No

CB:MB:EB:Chamberlain_K LUC FIGA2_x_r0_10946_Purpose1_A3L_15/12/2020

Figure A3.7

**Green Belt Purpose 2 Contribution:
Corfe Mullen**

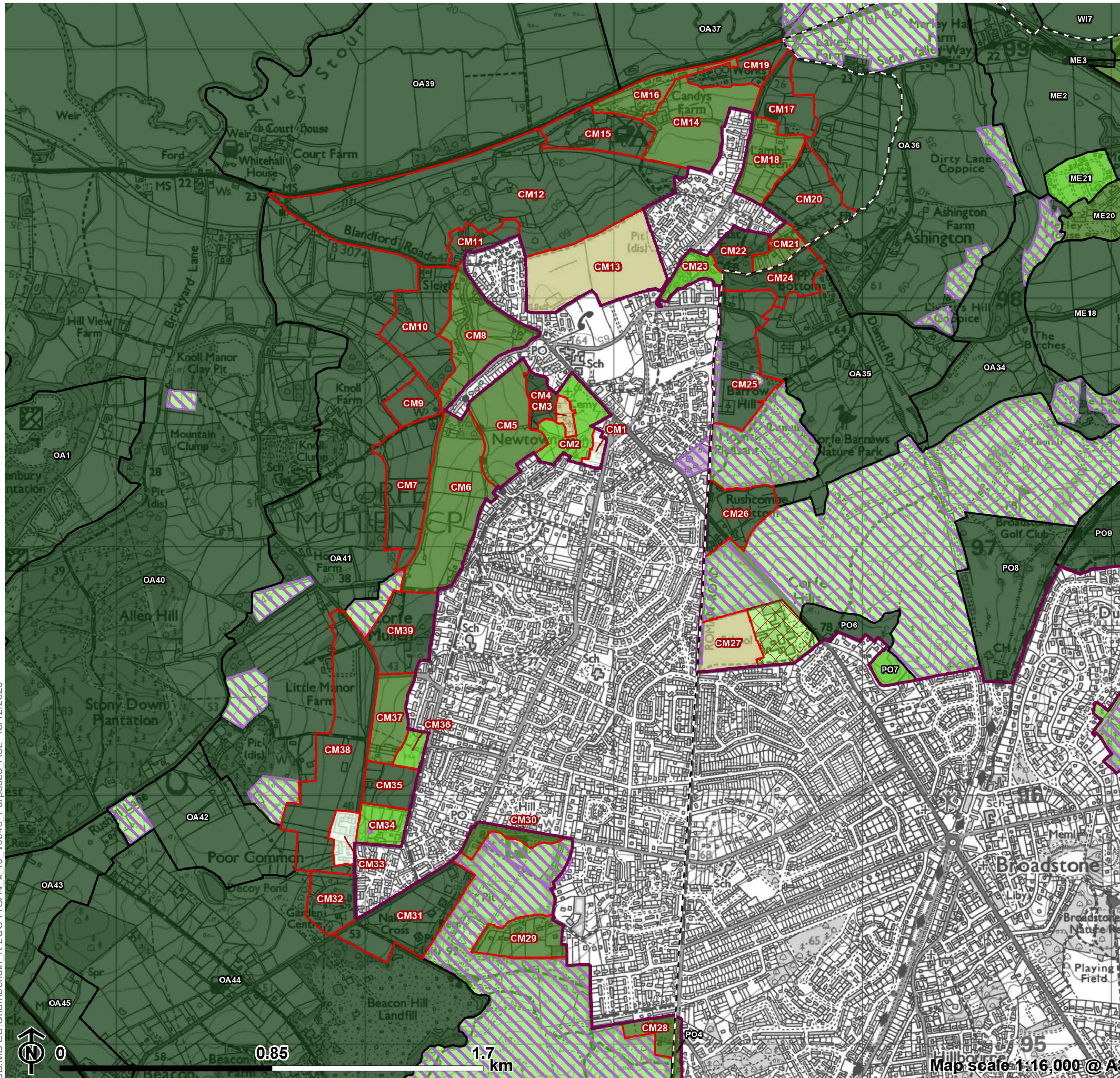


- - - Local Authority boundary
 - Inset area
 - Green Belt not assessed
 - Absolute constraint(s)
 - No openness
 - Corfe Mullen parcel
 - Parcel
- Purpose 2 contribution**
- Strong
 - Relatively strong
 - Moderate
 - Relatively weak
 - Weak/No

CB:MB:EB:Chamberlain_K LUC FIGA3_x_r0_10946_Purpose2_A3L_15/12/2020

Figure A4.7

**Green Belt Purpose 3 Contribution:
Corfe Mullen**



- - - Local Authority boundary
- Inset area
- Green Belt not assessed
- Absolute constraint(s)
- No openness
- Corfe Mullen parcel
- Parcel

Purpose 3 contribution

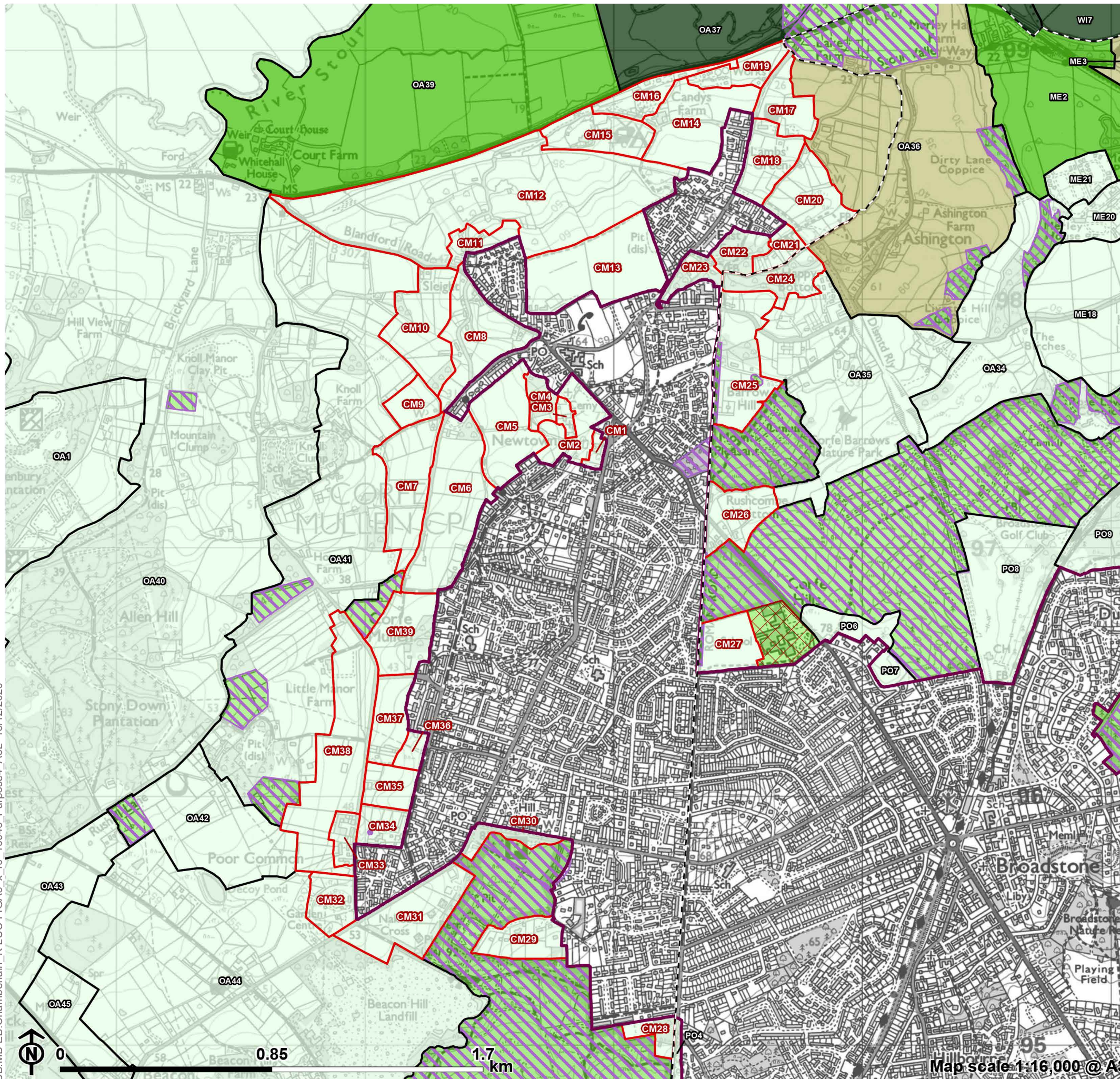
- Strong
- Relatively strong
- Moderate
- Relatively weak
- Weak/No

CB:MB:EB:Chamberlain_K LUC FIGA4_x_r0_10946_Purpose3_A3L_15/12/2020



Figure A5.7

**Green Belt Purpose 4 Contribution:
Corfe Mullen**



- Local Authority boundary
 - Inset area
 - Green Belt not assessed
 - ▨ Absolute constraint(s)
 - ▨ No openness
 - ▭ Corfe Mullen parcel
 - ▭ Parcel
- Purpose 4 contribution**
- Strong
 - Relatively strong
 - Moderate
 - Relatively weak
 - Weak/No

CB:MB:EB:Chamberlain_K LUC FIGA5_x_r0_10946_Purpose4_A3L_15/12/2020