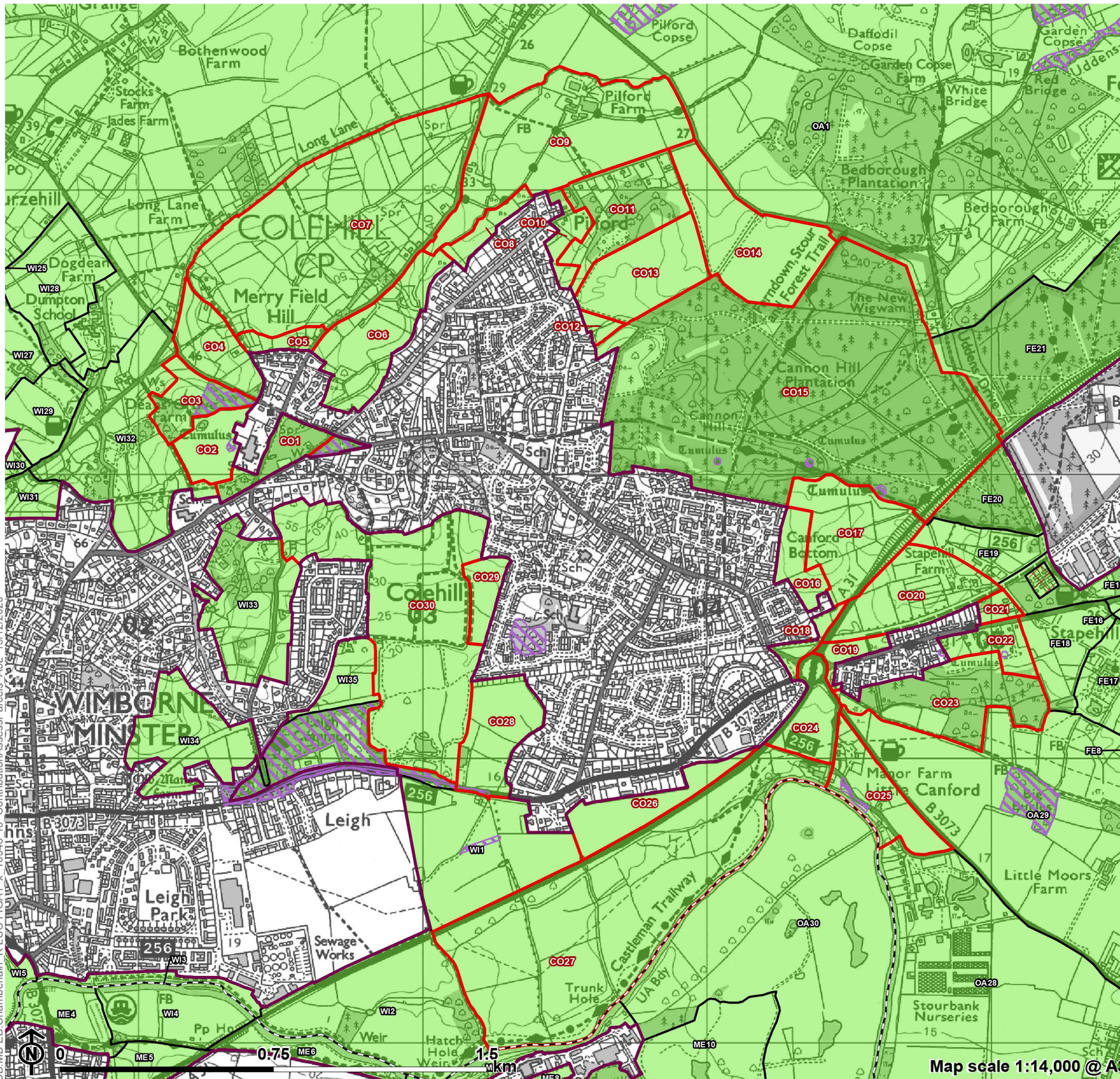


Appendix A

**Maps Showing Contribution
Assessment (for each purpose)
for Parcels around Inset
Settlements:
Colehill**

Figure A1.6

**Contribution Assessment Parcels:
Colehill**



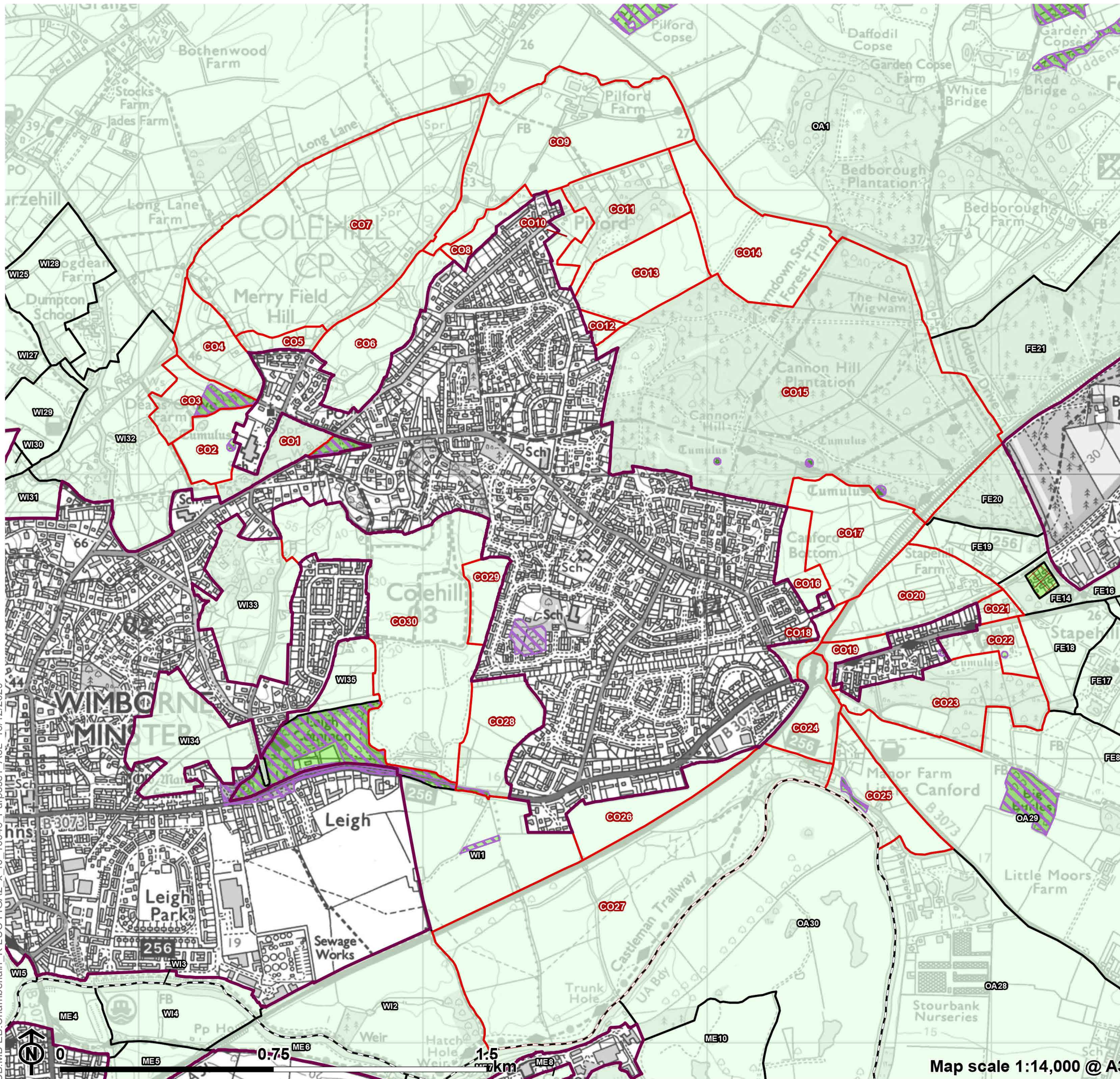
- Local Authority boundary
- Inset area
- Green Belt
- Red outline Colehill parcel
- Parcel
- No openness
- Absolute constraint(s)

CB:MB:EB:Chamberlain_K.LUC.FIG.A1_x_10946_r0_ContributionAssessParcels_A3L_15/12/2020

Map scale 1:14,000 @ A3

Figure A2.6

**Green Belt Purpose 1 Contribution:
Colehill**



- Local Authority boundary
- Inset area
- Green Belt not assessed
- Absolute constraint(s)
- No openness
- Colehill parcel
- Parcel

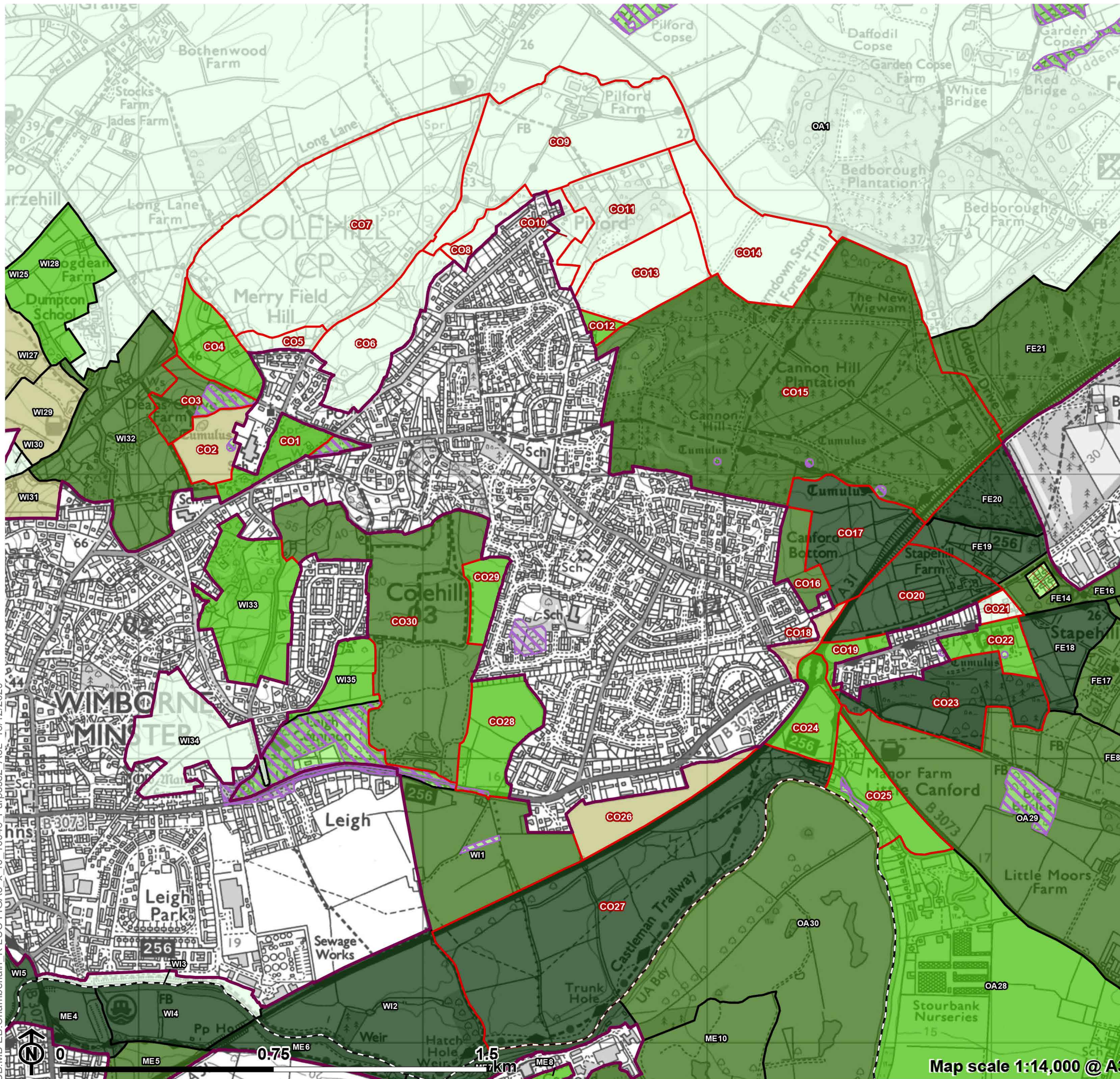
Purpose 1 contribution

- Strong
- Relatively strong
- Moderate
- Relatively weak
- Weak/No

CB:MB:EB:Chamberlain_K.LUC FIGA2_x_r0_10946_Purpose1_A3L_15/12/2020

Figure A3.6

**Green Belt Purpose 2 Contribution:
Colehill**



- Local Authority boundary
- Inset area
- Green Belt not assessed
- Absolute constraint(s)
- No openness
- Colehill parcel
- Parcel

Purpose 2 contribution

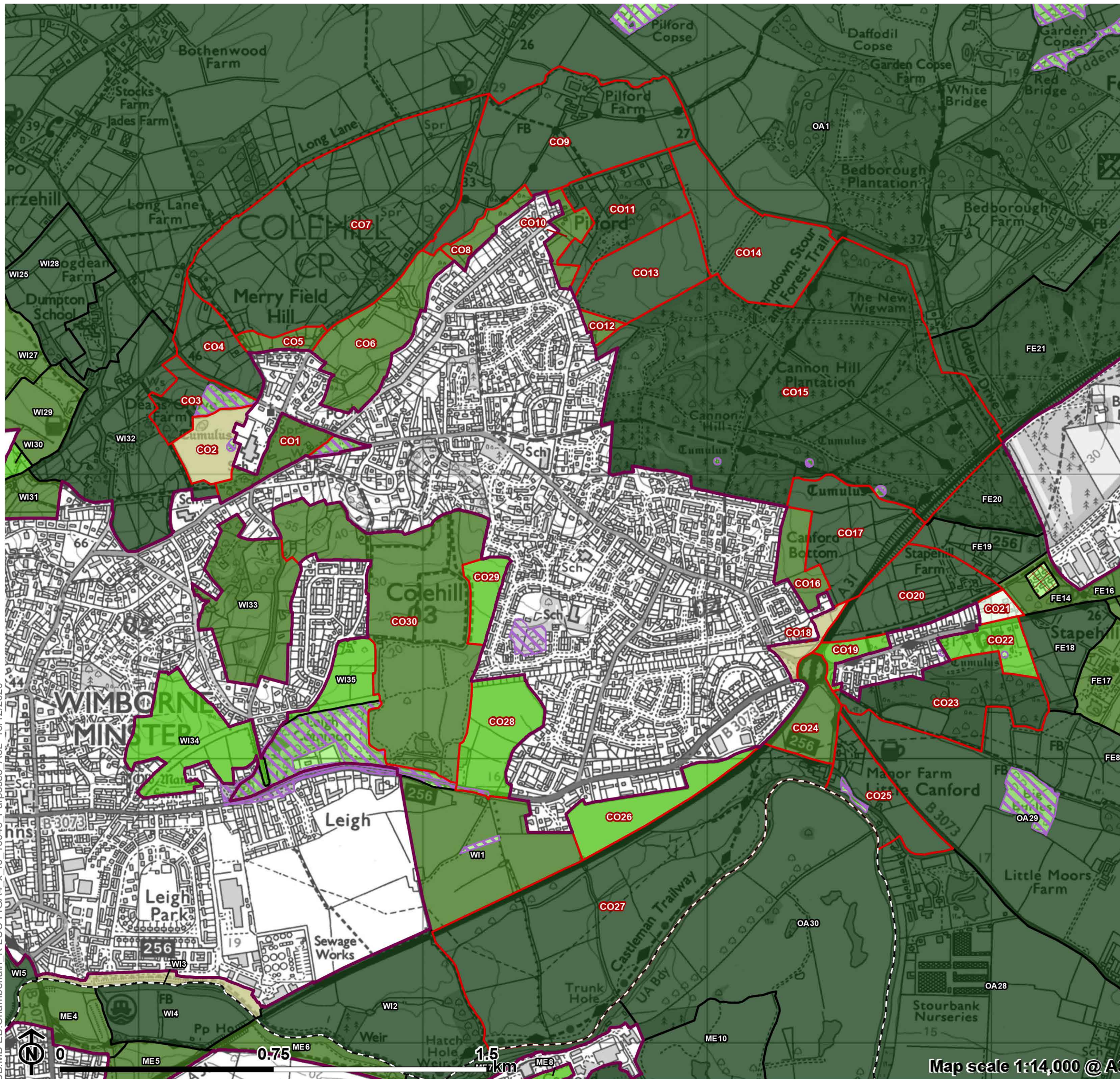
- Strong
- Relatively strong
- Moderate
- Relatively weak
- Weak/No

CB:MB:EB:Chamberlain_K.LUC FIGA3_x_r0_10946_Purpose2_A3L_15/12/2020

Map scale 1:14,000 @ A3

Figure A4.6

**Green Belt Purpose 3 Contribution:
Colehill**



- Local Authority boundary
- Inset area
- Green Belt not assessed
- Absolute constraint(s)
- No openness
- Colehill parcel
- Parcel

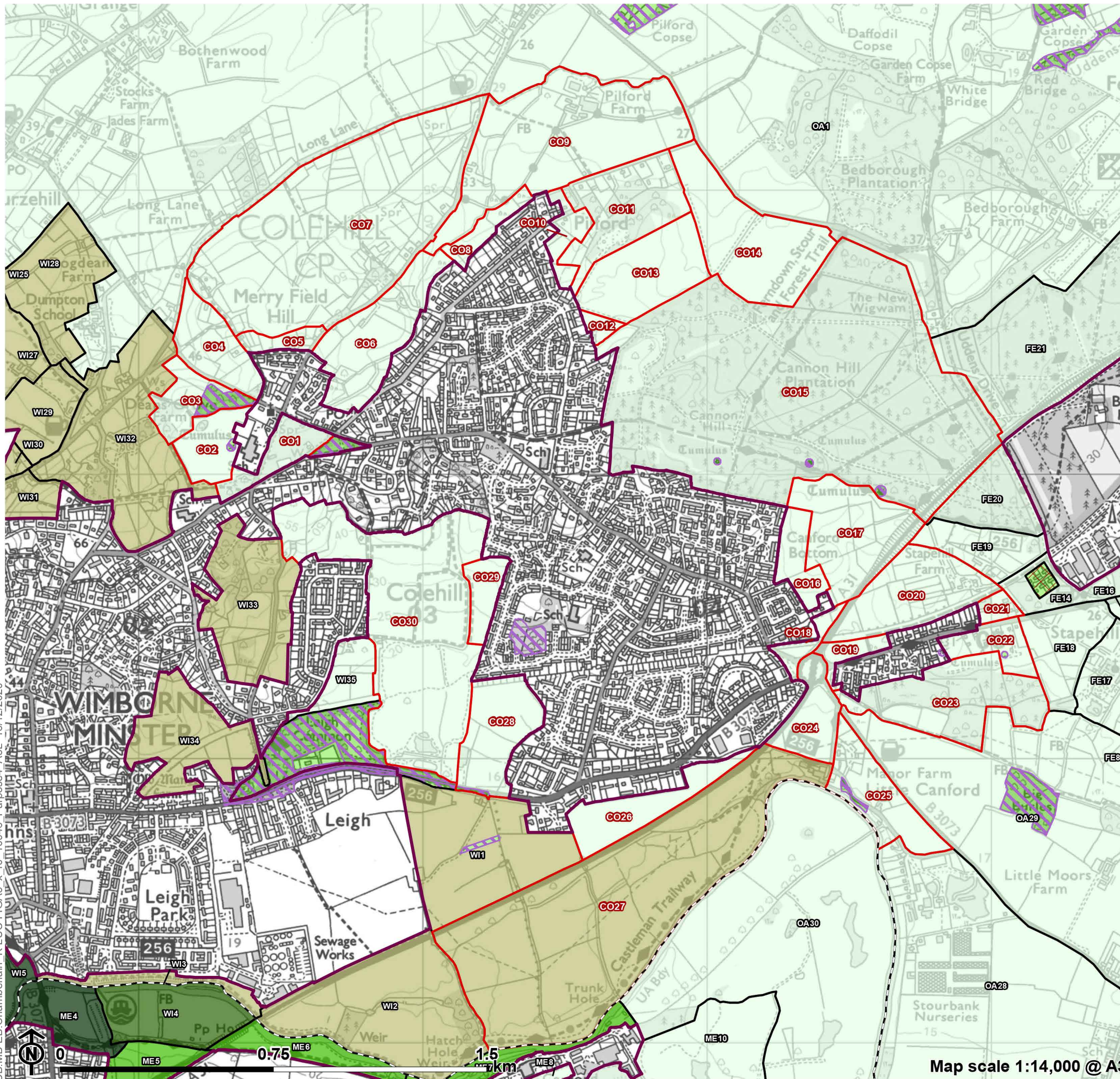
Purpose 3 contribution

- Strong
- Relatively strong
- Moderate
- Relatively weak
- Weak/No

CB:MB:EB:Chamberlain_K.LUC FIGA4_x_r0_10946_Purpose3_A3L_15/12/2020

Figure A5.6

**Green Belt Purpose 4 Contribution:
Colehill**



- Local Authority boundary
 - Inset area
 - Green Belt not assessed
 - Absolute constraint(s)
 - No openness
 - Colehill parcel
 - Parcel
- Purpose 4 contribution**
- Strong
 - Relatively strong
 - Moderate
 - Relatively weak
 - Weak/No

CB:MB:EB:Chamberlain_K.LUC FIGA5_x_r0_10946_Purpose4_A3L_15/12/2020

Map scale 1:14,000 @ A3