

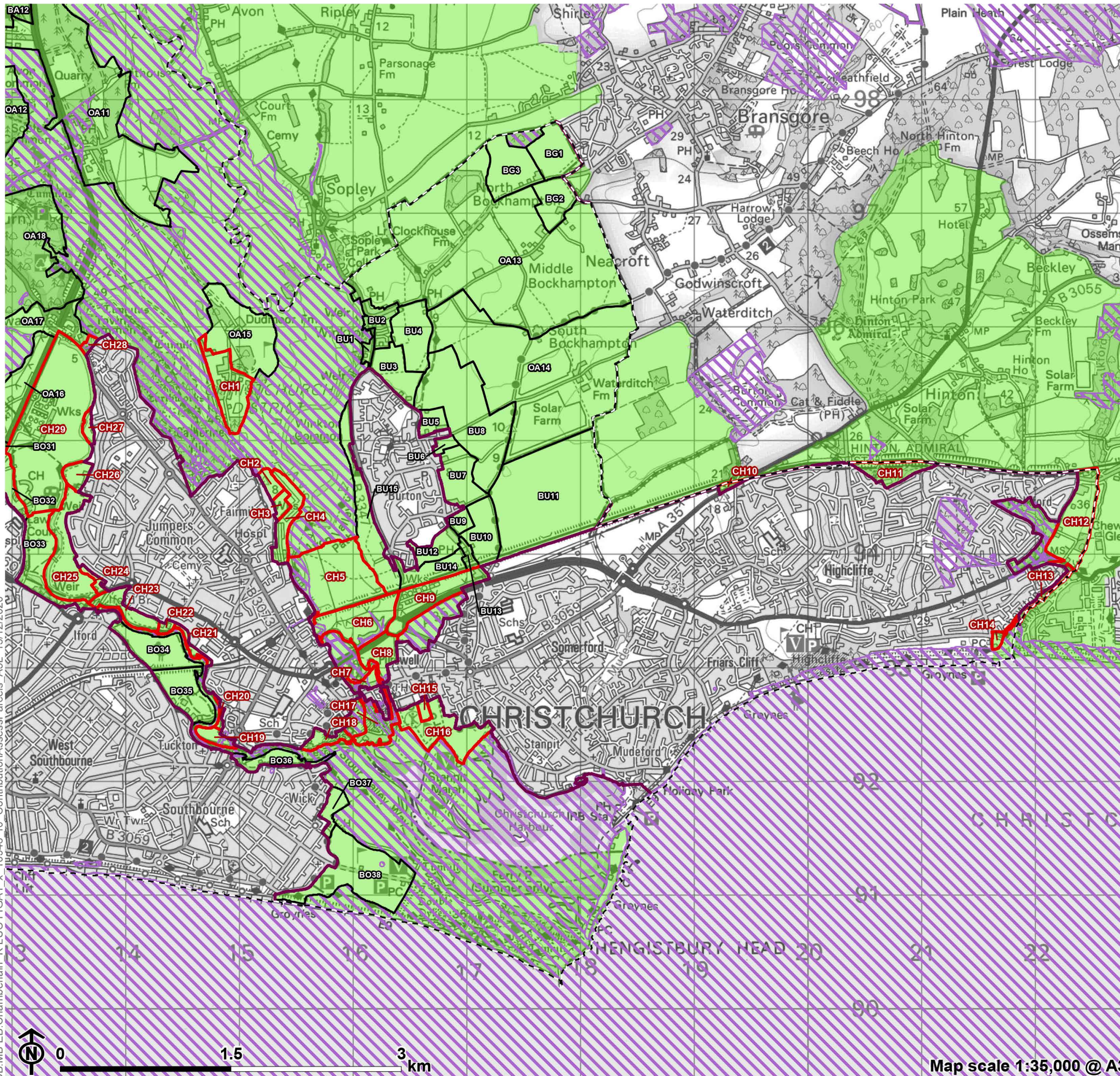
Appendix A

**Maps Showing Contribution
Assessment (for each purpose)
for Parcels around Inset
Settlements:
Christchurch & Highcliffe**

Figure A1.5

**Contribution Assessment Parcels:
Christchurch & Highcliffe**

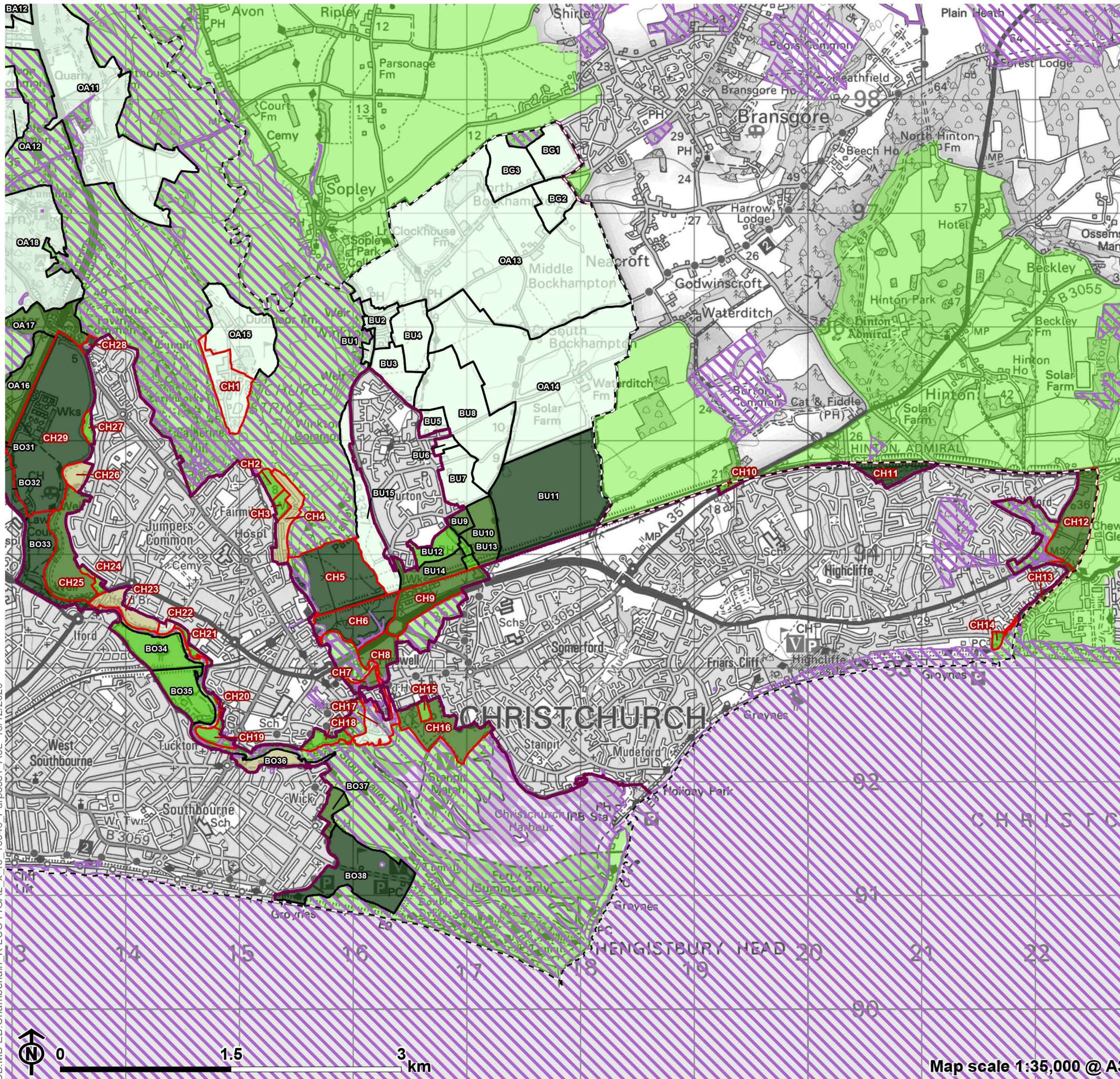
- Local Authority boundary
- Inset area
- Green Belt
- Christchurch & Highcliffe parcel
- Parcel
- Absolute constraint(s)



CB:MB:EB:Chamberlain_K.LUC FIGA1_x_10946_r0_ContributionAssessParcels_A3L_15/12/2020

Figure A2.5

**Green Belt Purpose 1 Contribution:
Christchurch & Highcliffe**



- Local Authority boundary
 - Inset area
 - Green Belt not assessed
 - ▨ Absolute constraint(s)
 - ▨ No openness
 - ▭ Christchurch & Highcliffe parcel
 - ▭ Parcel
- Purpose 1 contribution**
- Strong
 - Relatively strong
 - Moderate
 - Relatively weak
 - Weak/No

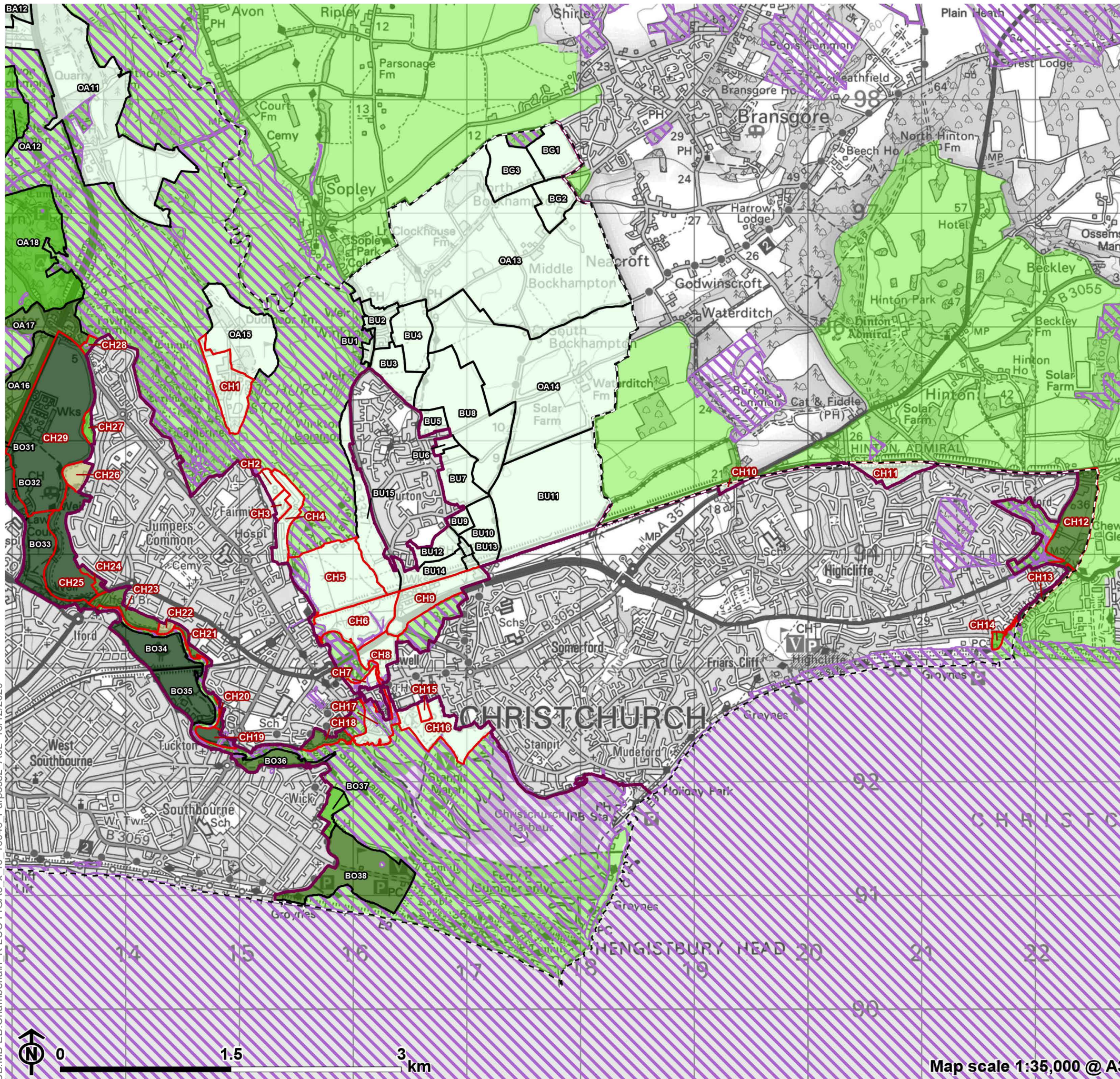
CB:MB:EB:Chamberlain_K.LUC FIGA2_x_r0_10946_Purpose1_A3L_15/12/2020



Map scale 1:35,000 @ A3

Figure A3.5

**Green Belt Purpose 2 Contribution:
Christchurch & Highcliffe**

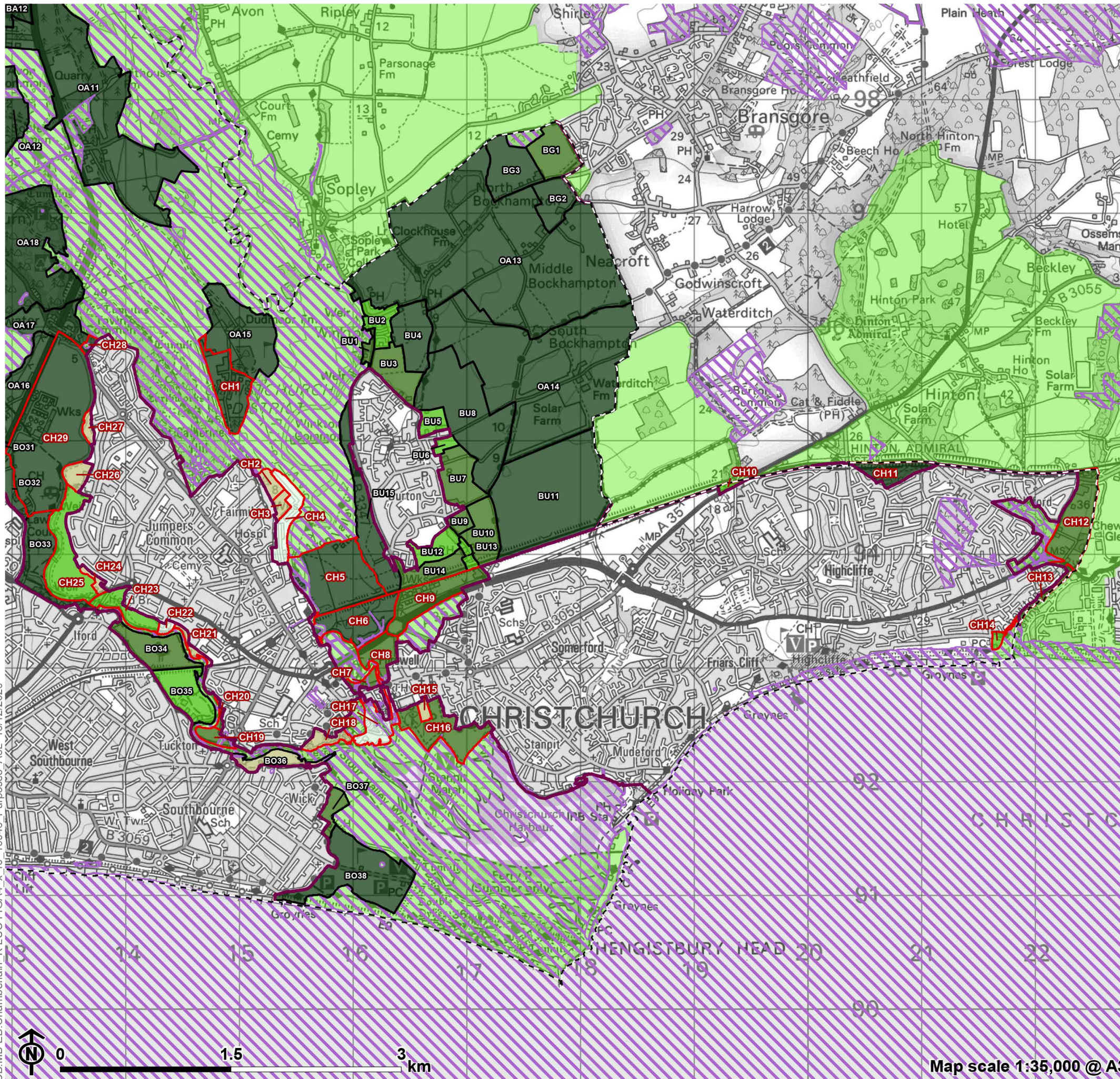


- - - Local Authority boundary
 - Inset area
 - Green Belt not assessed
 - ▨ Absolute constraint(s)
 - ▨ No openness
 - ▭ Christchurch & Highcliffe parcel
 - ▭ Parcel
- Purpose 2 contribution**
- Strong
 - Relatively strong
 - Moderate
 - Relatively weak
 - Weak/No

CB:MB:EB:Chamberlain_K.LUC FIGA3_x_r0_10946_Purpose2_A3L_15/12/2020

Figure A4.5

**Green Belt Purpose 3 Contribution:
Christchurch & Highcliffe**

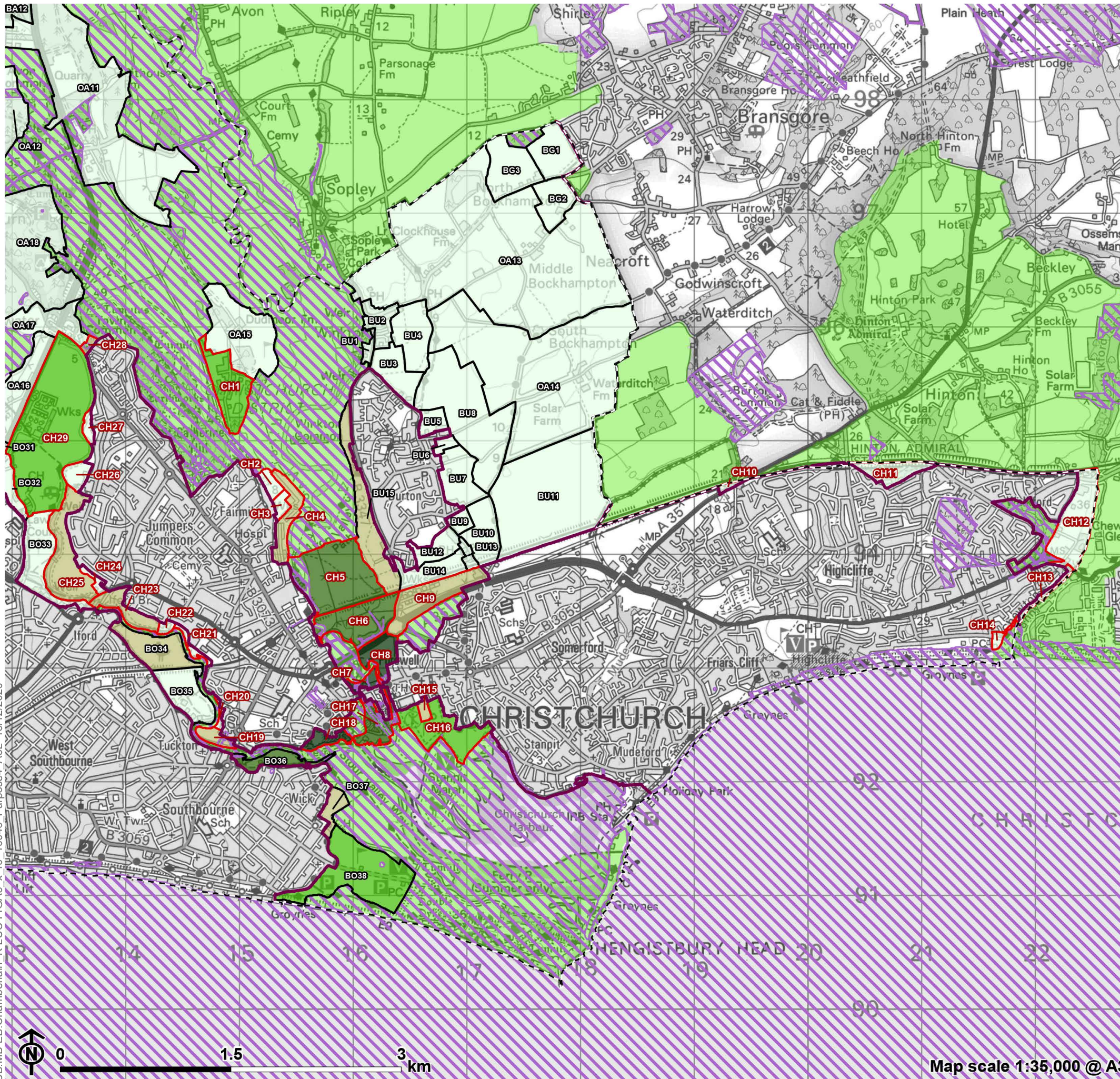


- Local Authority boundary
 - Inset area
 - Green Belt not assessed
 - ▨ Absolute constraint(s)
 - ▨ No openness
 - ▭ Christchurch & Highcliffe parcel
 - ▭ Parcel
- Purpose 3 contribution**
- Strong
 - Relatively strong
 - Moderate
 - Relatively weak
 - Weak/No

CB:MB:EB:Chamberlain_K.LUC FIGA4_x_r0_10946_Purpose3_A3L_15/12/2020

Figure A5.5

**Green Belt Purpose 4 Contribution:
Christchurch & Highcliffe**



- - - Local Authority boundary
 - Inset area
 - Green Belt not assessed
 - ▨ Absolute constraint(s)
 - ▨ No openness
 - ▭ Christchurch & Highcliffe parcel
 - ▭ Parcel
- Purpose 4 contribution**
- Strong
 - Relatively strong
 - Moderate
 - Relatively weak
 - Weak/No

CB:MB:EB:Chamberlain_K.LUC FIGA5_x_r0_10946_Purpose4_A3L_15/12/2020