

**DORSET LEP BOARD MEETING COVER SHEET**

<b>Meeting Date</b>	28 July 2016
<b>Paper Title</b>	Bournemouth, Dorset and Poole Minerals and Waste Planning – Update
<b>Paper Author/Contact</b>	Emma Macdonald – Senior Planning Policy Officer, Dorset County Council 01305 228585
<b>Purpose and Summary</b>	<p>Under the provisions of the Localism Act 2011 the Minerals and Waste Planning Authority has a statutory duty to cooperate with the Dorset Local Enterprise Partnership (LEP) on relevant strategic matters.</p> <p>The purpose of this paper is to update the LEP on the preparation of Minerals and Waste Planning documents</p>
<b>Decision Required</b>	To note the progress being made on the Waste Plan and Mineral Sites Document. The Minerals and Waste Planning Authority would also welcome any comments that the LEP may wish to make on the Waste Plan and/or Mineral Sites Plan consultation documents.
<b>Strategic Links</b>	<p>The provision of a steady supply of minerals and a network of sustainable waste management infrastructure will assist in the achievement of at least three of the LEP priorities:</p> <ul style="list-style-type: none"> <li>• advancing integrated spatial and infrastructure planning across the whole conurbation</li> <li>• planning positively for sustainable economic growth, emphasising the need to be “open for business”</li> <li>• creating a culture of enterprise and improving employability skills, working with schools, colleges and employers to develop an enterprise friendly curriculum</li> </ul>
<b>Implications, impacts or risks</b>	The Mineral and Waste Planning Authority has a responsibility to engage with the LEP during the preparation of planning policy documents. Failure to do so could result in the Plans being found ‘unsound’ at examination.
<b>Confidentiality</b>	The attached paper is not confidential.

## **Bournemouth, Dorset and Poole Minerals and Waste Planning – Update**

### **1. Introduction**

1.1. Dorset County Council has a 'duty to co-operate' with other authorities and certain bodies on the preparation of development plans. The specific list of statutory bodies is prescribed within the Town and Country Planning (Local Planning) (England) Regulations 2012. This list includes the relevant Local Enterprise Partnership.

2.1 Back in November 2014 the Minerals and Waste Planning Authority prepared a paper to inform the LEP of the progress to date on the Mineral Sites Document and the Waste Plan. The LEP were also asked to provide feedback to the Mineral and Waste Planning Authority on how it would like to be involved in the development of minerals and waste planning policy documents in the future. The LEP requested regular updates to the LEP Board at key stages of plan preparation and further focused engagement on specific issues, as appropriate.

2.2 In July 2015 the Minerals and Waste Planning Authority (MWPA) prepared a paper to update the LEP of the progress on the Draft Waste Plan and the Mineral Sites Document and the public consultation that took place between 15 July and 23 September 2015.

2.3 This report provides a brief update on the outcomes of the 2015 consultation and provides an update on the progress of both Plans including the 2016 public consultation.

### **2. The Waste Plan**

2.4 The Waste Plan, once adopted, will establish the vision, objectives and spatial strategy for the development of waste management facilities in Bournemouth, Dorset and Poole up to 2032. It will set out policies and, where possible, identify specific locations to guide development proposals during the Plan period.

2.5 Over 900 responses were received from nearly 200 individuals and organisations to the 2015 consultation. Generally, consultees agreed with the levels of waste growth forecast and were supportive of the proposed policies/supporting text.

2.6 A number of new sites/facilities have emerged since the 2015 consultation. These new sites are included in the 2016 consultation. In addition, following further work, it has been possible to discount some of the sites contained in the 2015 consultation document. The remaining sites are emerging as preferred sites for possible allocation in the final Plan. This additional consultation provides stakeholders with an opportunity to comment on the new sites and emerging preferred sites.

2.7 Appendix 1 contains an overview plan of the waste sites contained in the 2016 consultation document. Appendix 2 contains a list of the sites and proposed uses.

2.8 The Draft Waste Plan Update 2016 consultation document is available in full on our website along with other supporting information and detailed site assessments for each site.

### **3 Mineral Sites Plan**

- 3.1 The Mineral Sites Plan, once adopted, will allocate suitable sites for quarrying of sand, gravel, building stone and ball clay to meet requirements. It will also contain policies to facilitate the development and restoration of mineral sites and the safeguarding of existing mineral sites and facilities.
- 3.2 During the 2015 consultation approximately 1,300 responses were received from some 746 individuals/organisations. The majority of comments respondents were generally opposed to proposed minerals development. Concerns related to adverse impacts from increased quarry traffic, loss of recreational space, effects upon enjoyment of the countryside, landscape, property values and economic impacts.
- 3.3 The 2016 consultation is primarily an update of information that was presented in the 2015 Draft Mineral Sites Plan, and includes aggregate production figures for 2014, amendments to the aggregates Area of Search, amendments to some of the preferred site options and a new site which was proposed following the 2015 consultation.
- 3.4 Appendix 3 of this report illustrates the proposals set out in the Draft Mineral Sites Plan Update 2016.

### **4 Next steps - Consultation**

- 4.1 Public consultation is taking place between 26 May and 21 July 2016. The Minerals and Waste Planning Authority (MWPA) is aware that this LEP meeting will take place after the consultation end date. The MWPA would welcome any comments that the LEP may wish to make and will accept comments received following this meeting. It would be helpful if any comments could be reported to the MWPA by the end of August 2016.
- 4.2 This is the last planned consultation before publication of the pre-submission draft Waste Plan and Mineral Sites Plan, at which stage consultation will be limited to matters of soundness and legal compliance. It is intended to publish the pre-submission Plans in early 2017 for a statutory six week consultation. This will then form the version that is submitted to the Secretary of State for an independent examination.

### **5 Further Information**

- 5.1 The Draft Waste Plan, Mineral Sites Plan and supporting documents can be viewed in full on our website

[www.dorsetforyou.com/mineral-sites](http://www.dorsetforyou.com/mineral-sites)  
[www.dorsetforyou.com/waste-plan](http://www.dorsetforyou.com/waste-plan)

- 5.2 If you have any queries or would like any more information then please do not hesitate to contact the minerals and waste policy team

Waste Plan:

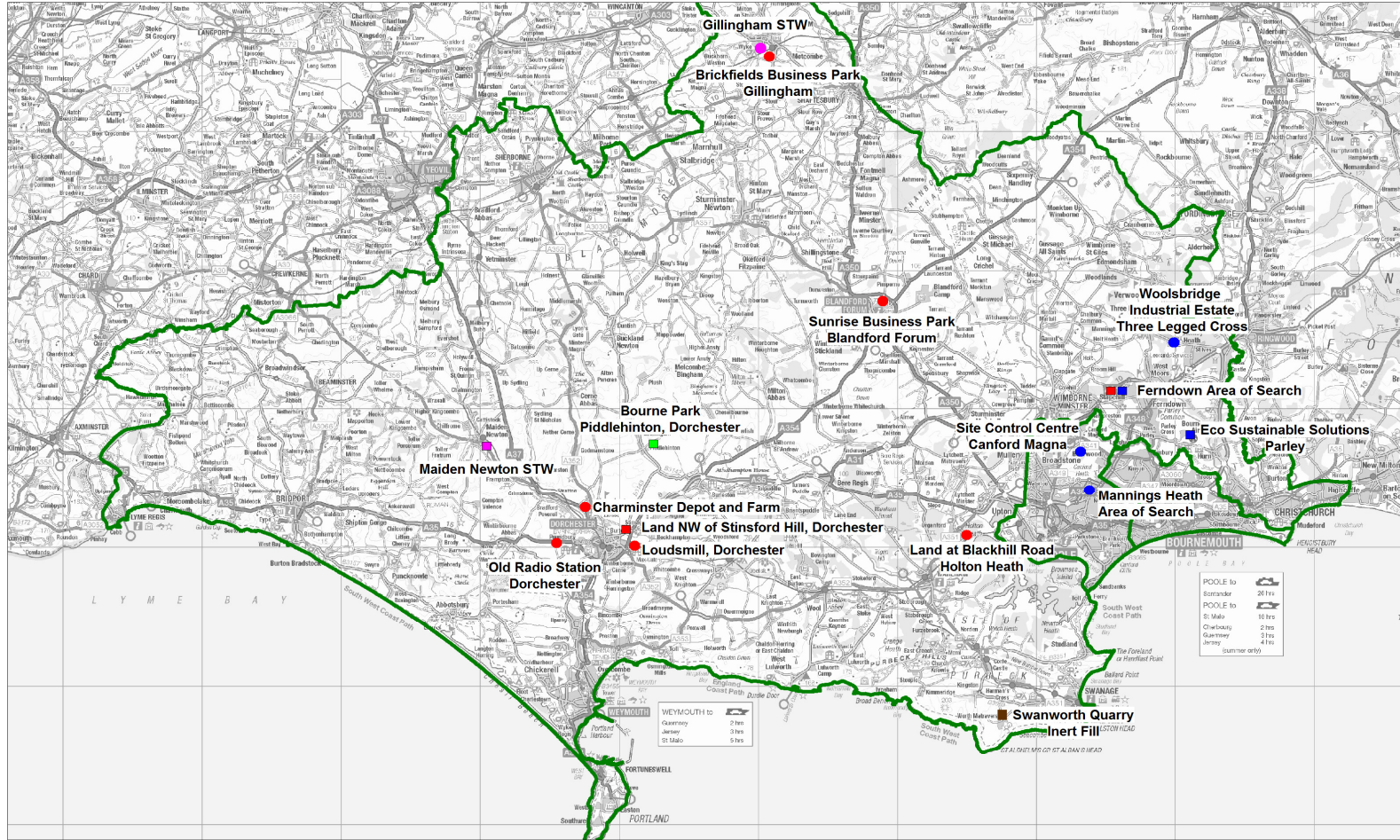
- Emma Macdonald 01305 228585 e.c.macdonald@dorsetcc.gov.uk

Mineral Sites Plan:

- Trevor Badley 01305 224675 t.g.badley@dorsetcc.gov.uk

**Emma Macdonald**  
**Senior Planning Officer**  
**Minerals and Waste Planning Policy**

Appendix 1



<p><b>Preferred and Additional Waste Sites 2016</b></p> <ul style="list-style-type: none"> <li><span style="border: 1px solid black; border-radius: 50%; width: 15px; height: 15px; display: inline-block;"></span> Emerging preferred sites</li> <li><span style="border: 1px solid black; width: 15px; height: 15px; display: inline-block;"></span> Additional waste sites for consultation</li> </ul>		<ul style="list-style-type: none"> <li><span style="color: red; font-size: 1.2em;">●</span> Local waste recycling facility</li> <li><span style="color: blue; font-size: 1.2em;">●</span> Strategic waste facilities (Residual/bulky waste)</li> </ul>	<ul style="list-style-type: none"> <li><span style="color: brown; font-size: 1.2em;">●</span> Inert fill site</li> <li><span style="color: green; font-size: 1.2em;">●</span> Green waste composting</li> <li><span style="color: magenta; font-size: 1.2em;">●</span> Sewage treatment works</li> </ul>	<p>Date: 30/03/2016 Scale 1:250000</p> <p>Cent X: 376404 Cent Y: 99099</p>	<p>GEOGRAPHICAL INFORMATION SYSTEMS</p>  <p>Dorset County Council</p> <p><small>© Crown copyright and database rights 2016 Ordnance Survey 100019700. You are permitted to use this data solely to create your own reports or internal use. The information has been provided to you with the date. You are not permitted to copy, distribute, disseminate or sell any of this data to third parties in any form. Aerial Photography © UKAIP/Esri/DeLorme 2002 © Geoempire 2005, 2006 &amp; 2016</small></p>
---	--	--	--	--	---

**Appendix 2**

Site Ref	Proposed Waste Site Allocation	District/Borough	Potential Uses	Local/Strategic Waste Facility
WP01	<p><b>Ferndown Area of Search</b></p> <p><i>(additional site subject to consultation)</i></p> <p>Blunts Farm, land adjacent to Blunts Farm and the wider Ferndown and Uddens Industrial Estate</p>	East Dorset	<p>Bulky waste transfer/treatment</p> <p>Residual Waste Treatment including energy recovery</p> <p>Household Recycling Centre</p> <p>Waste Vehicle Depot</p>	Local and strategic facilities proposed
WP02	<p><b>Woolsbridge Industrial Estate,</b> south east of Three Legged Cross</p>	East Dorset	<p>Bulky waste transfer/treatment</p> <p>Residual Waste Treatment including energy recovery</p>	Strategic facility
WP03	<p><b>Mannings Heath Area of Search</b></p>	Borough of Poole	<p>Bulky waste transfer/treatment</p> <p>Residual Waste Treatment including energy recovery</p>	Strategic facility
WP04	<p><b>Site Control Centre,</b> Candford Magna</p>	Borough of Poole	<p>Intensification of existing Waste Management Facility, including increased capacity for the management of residual waste and complementary activities that push waste up the waste hierarchy</p>	Strategic facility
WP05	<p><b>Eco-Sustainable Solutions,</b> Parley</p> <p><i>(additional site subject to consultation)</i></p>	Christchurch	<p>Intensification of existing Waste Management Facility, including increased capacity for the management of residual waste and complementary activities that push waste up the waste hierarchy</p>	Strategic facility

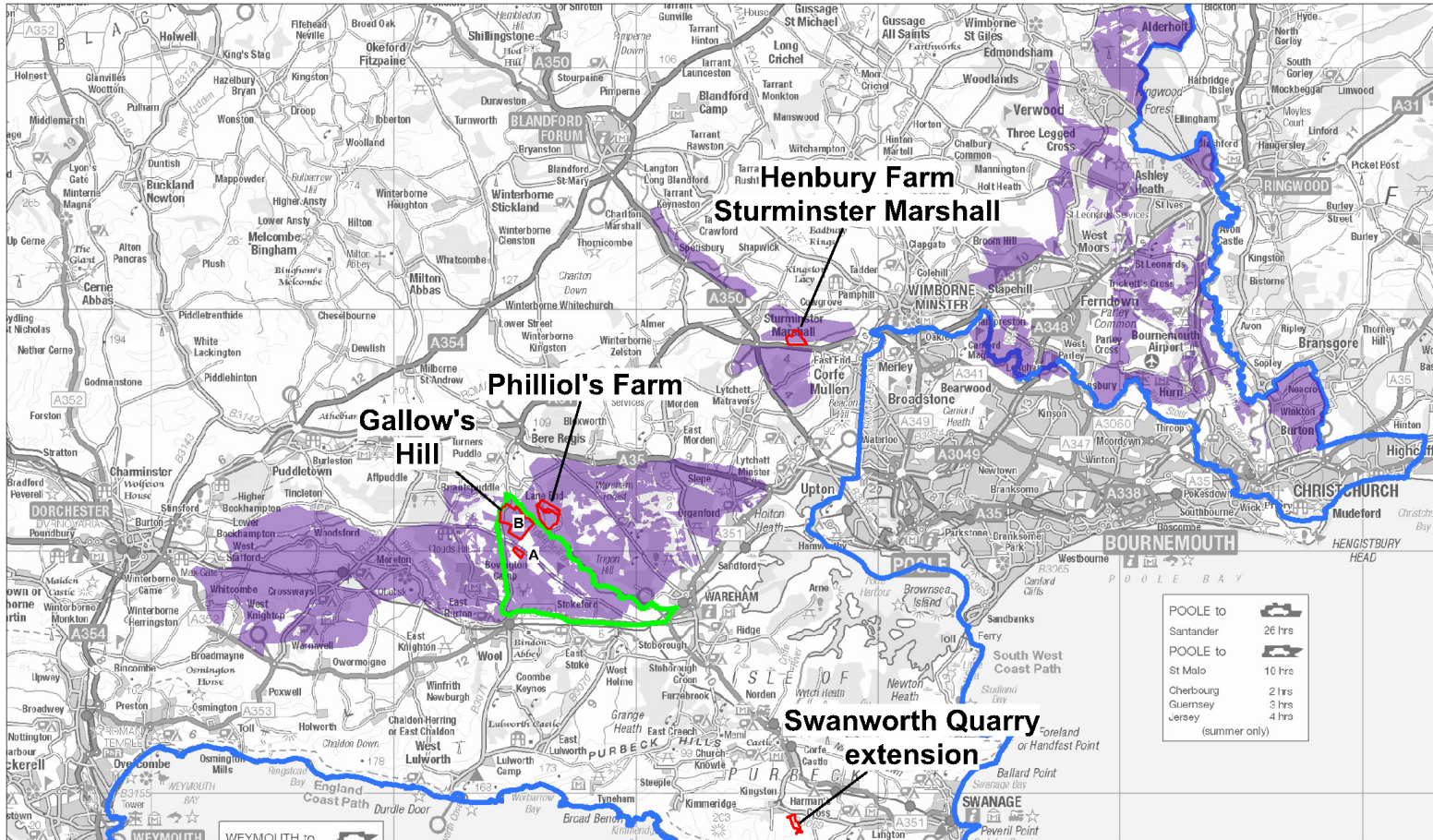


<b>WP06</b>	<b>Land South of Sunrise Business Park, Blandford</b>	North Dorset	Household Recycling Centre Waste Transfer Station Waste Vehicle Depot	Local waste facility
<b>WP07</b>	<b>Brickfields Business Park, Gillingham</b>	North Dorset	Household Recycling Centre Waste Vehicle Depot	Local waste recycling facility
<b>WP08</b>	<b>Gillingham Sewage Treatment Works</b>	North Dorset	Sewage Treatment Works Extension	Local STW
<b>WP09</b>	<b>Maiden Newton Sewage Treatment Works</b>  <i>(additional site subject to consultation)</i>	West Dorset	Sewage Treatment Works Extension	Local STW
<b>WP10</b>	<b>Land at Stinsford Hill, Dorchester</b>  <i>(additional site subject to consultation)</i>	West Dorset	Household Recycling Centre Waste Transfer Station Waste Vehicle Depot	Local waste recycling facility
<b>WP11</b>	<b>Loudsmill, Dorchester</b>	West Dorset	Household Recycling Centre	Local waste recycling facility
<b>WP12</b>	<b>Old Radio Station, Dorchester</b>	West Dorset	Waste Transfer Station Waste Vehicle Depot	Local waste recycling facility
<b>WP13</b>	<b>Charminster Depot &amp; Farm</b>	West Dorset	Waste Vehicle Depot	Local waste recycling facility
<b>WP14</b>	<b>Land at Bourne Park, east of Piddlehinton</b>  <i>(additional site subject to consultation)</i>	West Dorset	Green waste composting	Green waste
<b>WP15</b>	<b>Land at Blackhill Road, Holton Heath Industrial Estate</b>	Purbeck	Waste Transfer Station	Local waste recycling facility

			Waste Vehicle Depot	
<b>WP16</b>	<b>Swanworth Quarry</b>	Purbeck	Inert waste filling	Inert waste




Appendix 3



**Mineral Sites Plan**  
**Consultation 2016**

	Sand & Gravel Area of Search		County Boundary
	Nominated Mineral Sites		Puddletown Road Policy Area

**GEOGRAPHICAL INFORMATION SYSTEMS**



**Dorset County Council**

© Crown copyright and database rights 2016 Ordnance Survey 100019790. You are permitted to use this data solely to enable you to respond to, or interact with, the organisation that provided you with the data. You are not permitted to copy, re-publish, distribute or sell any of this data to third parties in any form. Aerial Photography © UK Perspectives 2002. © Getmapping 2005, 2009 & 2014

Date: 25/04/2016  
 Cent X: 405186  
 Cent Y: 103279