

SPETISBURY



PARISH PLAN



Spetisbury Parish Plan

Contents

- 1 Contents
- 2 Aims and Objectives for the Parish Plan
The Parish of Spetisbury – a description
- 3 Village Map
- 4 A Brief History of Spetisbury
- 5/6 Developing the Parish Plan – the consultation process
- 7-9 Survey Findings
 - * 7 Main Findings; Household Section; Personal Section; Employment Issues.
 - * 8 Traffic and Transport; Education; Housing; Community Issues; Leisure and Recreation.
 - * 9 Other Issues; What the Children’s Questionnaire tells us; The Youth Questionnaire.
- 9 General Conclusions
- 10 Future thoughts
Contacts
- 11 / 12 Action Plan
- 13 / 14 / 15 / 16 Images of Spetisbury

Acknowledgements

We are grateful to the following for their invaluable contribution to the process so far and for their future commitment to the project through funding, support, advice, assistance and time given.

Countryside Agency; Dorset Community Action; Local, District and County Councils; The Parish Council; The Drax; Ann Taylor (History of Spetisbury); Ann Weatherley-Barton (Parish Clerk – Charlton Marshall); The Parish Plan Steering Group members; Gerry Hopkins (local photographer)

Parish Plans

Aims and Objectives

The Government's 'Rural White Paper' of 2000 set out a framework for communities to plan their own future, with initial 'set up' funding for the process through the Countryside Agency.

A Parish Plan is a statement of how a community sees itself developing over the short, medium and long term future.

Aims

- To reflect the views of all sections of the community
- To identify features and facilities that people value
- To identify local needs and aspirations
- To set out how residents want the community to develop in the future
- To prepare a plan of action to achieve this vision

Objectives

- To produce an action plan to be taken forward by the village community and other stakeholders such as the District or County Council and other services
 - Using evidence of village needs in order to attract funding over the short, medium and long term
 - To be proactive in promoting, encouraging and developing an enhanced future for Spetisbury and its residents
-

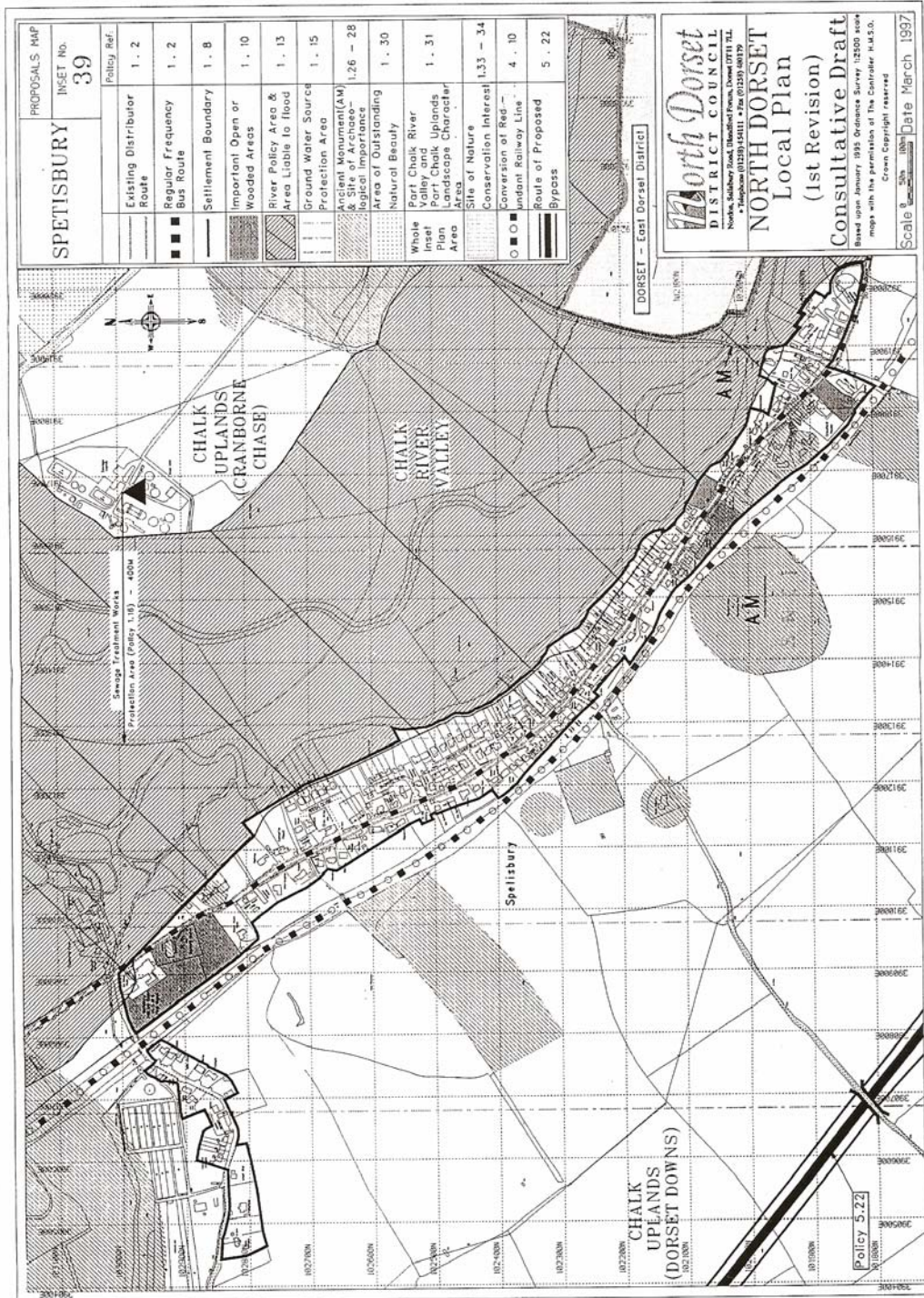
The Parish Of Spetisbury – A Description

Moving clockwise around Spetisbury's parish boundary and starting from the River Stour just N.W. of Keynston Mill, it follows the river S.E. to just past Crawford Bridge (just over 2 km). It then swings S.W. and W to Combs Ditch (about 3 ½ km) which it follows NW for a short time (1 km) before swinging NE, crossing the A350 close to the first residential buildings of Charlton Marshall before crossing the river valley to where we started (about 4 km), to complete the circuit.

The population of the parish in the 2001 census was 542 with 233 households.

Amenities include the Church, School, a Public House, Village Hall, Village Garden and Cricket Field with small pavilion. There is currently no village playing field or children's playground. Running SE to NW is the Trailway, the line of the old railway running from Spetisbury to the boundary with Blandford.

Village Map



A Brief History of Spetisbury

There is evidence that Spetisbury was inhabited in the Bronze Age (burial rings up at West End) and Iron Age (Spetisbury Rings) but the first documentary evidence is William the Conqueror's Domesday Book which mentioned the manors of Spetisbury and Great Crawford. During the Middle Ages the village consisted of three manors or estates, Spetisbury (in the north), Middle Street (around the village hall) and Great Crawford (to the south). These were gradually combined and by 1800 the landowner Francis Fane owned the majority of the parish. By 1869 the major landowner was the Drax Estate. It is to them that we owe the inconsistent house numbering as only the houses they owned were numbered.

In 2006 there are still many signs in Spetisbury of previous centuries. The first record of Crawford Bridge was in 1334, the church has parts dating from Norman times, a carving from the eighteenth century Spetisbury Manor House is set in the churchyard wall, the village hall and houses in St Monica's were once part of a nunnery, many of the cob and thatch cottages date from the eighteenth century or earlier, and many of the medieval fords still exist.

The main employment has always been farming, with associated crafts such as blacksmith, bakery, butcher, dairyman. The River Stour and the many springs up at West End were probably the reason the first residents chose this area and have continued to provide work and food (the cress beds, reed cutting and basketmaking, fishing) and leisure facilities (swimming, canoeing).

Photos Of Old Spetisbury

Spetisbury Hall and Sloper School was founded in 1733 by Rev Charles Sloper, rector, and Bishop Hall of Bristol..It began in a barn, then moved to two sites in West End before the current building was opened in 1862.

At one stage the village had at least five pubs – the Drax Arms, the Railway Inn (pictured, closed 1985), the Castle Inn (in the White House, closed 1914), the Dog Inn (by Crawford bridge, burnt down 1899) and the Bugle Horn (near Hathaways, burnt down 1887).

The centre of the village consisted of rows of thatched cottages until a fire at the bakery demolished them all in 1905.

The Manor House for Middle Street became a nunnery in 1800 and was greatly enlarged. It housed a succession of three different orders of nuns and one of monks before the final nuns left in 1926. The current Village Garden is their burial ground.

Spetisbury had a station from 1860 to 1956 and the railway line itself closed about 1970.



Developing the Parish Plan

A Parish Plan Steering Group Committee of 12 villagers (young and older!) was set up in 2004, led ably by Parish Councillor Helen Reed (subsequently by Mark Cheesley). A small amount of funding was accessed through the Countryside Commission to get the process started. Following a number of planning meetings the steering group went into 'public consultation' mode in late 2004, advertising the process through the Parish News, Parish Council meetings, the Annual Parish meeting and various flyers to villagers (see flyers over next two pages).

SPETISBURY PARISH PLAN

**Do you want a say in the future of Spetisbury?
Then here is your opportunity!**

The attached questionnaires have been compiled by the Parish Plan Steering Committee and are based upon a model supplied by the Countryside Agency, examples from neighbouring villages and on views expressed at the Annual Parish Meeting and the recent preliminary survey.

Now we need specific information about various aspects of village life. We will then be able to produce an Action Plan based upon what Spetisbury villagers think they need. The more returns we have, the more evidence there will be to present to funding agencies and planning and other relevant bodies.

So - please complete the questionnaire carefully and return it to one of the following collection points -

The Drax	Steve Hall, 6, Slopers Mead
The Church	Rob Brown, 1, West End
Mark Cheesley, Stourlea	Pam Hills, Tixalls

by **SATURDAY JUNE 25th 2006**

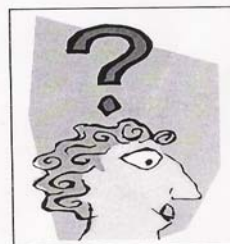
If you would like help with completing it or would like someone to collect it, please contact Janet Isaac, 857759

Please retain one raffle ticket and return the other, still attached to this notice, if you wish to be entered in **PARISH PLAN GRAND DRAW** to be held at the Church Fete on June 25th. There will also be a stall where you can find out more and this will also be your last chance to hand in the questionnaire. Winning numbers will be announced on the day and also published in the next issue of the Parish Magazine.

WE NEED EVERYONE'S IDEAS

Parish Plan Steering Committee

Rob Brown	Sarah Collett	Amy Churcher
Mark Cheesley	Steve Hall	Pam Hills
Janet Isaac	Heather Jesty	Peter Murray
Iris Parker	Tony Parker	Helen Reed
Vicky Reed		



After an initial stab at a response from villagers about issues affecting them (12% response only), in April 2005, the steering group sent out full questionnaires, based on a model supplied by the Countryside Agency, to all households in Spetisbury, including versions for young and older children. Replies had to be returned by 25th June 2005 at the annual Church Fete where a Parish Plan stall was set up to collect responses and to give information about the process.

Dorset Community Action was then commissioned to analyse the results and produce a report about the findings. This was handed to the steering group in November 2005. All households were given a **feedback** summary and were invited to open meetings in January 2006 further to develop ideas for the development of an action plan (see invitation to open meetings below).

AN INVITATION TO FIND OUT MORE ABOUT THE PARISH PLAN

YOU WILL FIND ATTACHED A BRIEF SUMMARY OF THE DATA RECEIVED FROM THE VILLAGE SURVEY

IF YOU WANT A FULL COPY OF THE RESULTS, THEY CAN BE OBTAINED, AT NO CHARGE, FROM ANY OF THE PARISH PLAN STEERING GROUP.

WE WOULD LIKE TO INVITE YOU TO GIVE US YOUR COMMENTS , AIR YOUR VIEWS AND HAVE SOME FUN AT THE SAME TIME. THE STEERING GROUP HAS ARRANGED A FEW EVENTS TO ALLOW THIS TO HAPPEN THAT WILL, HOPEFULLY, INVOLVE EVERY MEMBER OF THE COMMUNITY. THE DATES FOR YOUR DIARIES ARE AS FOLLOWS:-

YOUNG PEOPLE

20TH JANUARY 2006 WE ARE HOLDING A DISCO FOR CHILDREN AGED BETWEEN 0 – 8 YRS FROM 5pm TO 7pm WITH LIGHT REFRESHMENTS.

20TH JANUARY 2006 FOLLOWING THE ABOVE WE ARE HOLDING A DISCO FOR YOUNG ADULTS AGED 8yrs TO 16 yrs STARTING AT 7.30 WITH A BRIEF **Q & A** SESSION FOLLOWED BY A DISCO TILL 10.00 pm.

ADULTS

21ST JANUARY 2006 WE ARE HOLDING AN INFORMAL Q & A CHAT GROUP FROM 2.00 pm TILL 6 pm WITH TEA & CAKES. WHY NOT DROP IN TO SEE US.

21ST JANUARY 2006 FOLLOWING THE ABOVE, THERE WILL BE AN EVENING OF **Q & A** AT 7.30pm FOLLOWED BY A DISCO UNTIL 11.00pm FOR THE GROWN UPS. ITS BRING YOUR OWN BOTTLE. EVERYONE IS WELCOME SO COME, RELAX & WHO KNOWS, YOU MAY HAVE A BOOGIE.

COME AND JOIN US, SUPPORT YOUR VILLAGE AND HAVE SOME FUN AT THE SAME TIME

The Survey – Main Findings

Overall a total of 84 household questionnaires were returned (36%). Those households contained 212 people, just over 39% of the total population (from 2001 census figures). The response rate was a little disappointing compared with similar exercises in other Dorset villages but was no reason not to take the survey's findings seriously.

The children's survey was completed by 24 children, 13 girls and 11 boys; 26 people, 12 males and 14 females, drawn from 14 households, completed the young people's survey (overall a higher response rate than the adults!).

Household Section

From the responses received, nearly 20% were aged 65+ and just over 60% between 16 and 64, which matches almost exactly with the 2001 census and was therefore a representative sample of the village.

Personal Section

Of the respondents 46% are male and 54% female. Over a quarter had lived in Spetisbury and their current home for less than 5 years. However, well over a third had lived in the village for sixteen years or more.

The features considered to be important to residents of Spetisbury were the environment (74%), the community (60%) and the situation (47%). The walks and pub were mentioned by a number of people as being important features.

Employment Issues

76% use car or van as their main means of transport to work and 13% the bus....6% work from home.

Very few of the respondents were actively seeking work.

To the question "Should the following be encouraged in and around Spetisbury?" the answers follow in table form... 1 - Strongly in favour, 2 – In favour, 3 - No strong opinion, 4 – Have reservations, and 5 - Definitely not....answers in percentage form.

	1	2	3	4	5
Tourism development	10.1	13.7	27.3	15.8	19.4
Small businesses	18.0	30.2	20.9	11.5	11.5
Industrial workshops	8.6	8.6	25.9	21.6	25.2
More jobs	18.7	21.6	30.9	7.2	12.9

From this it can be seen that none of the employment initiatives suggested meet with a great deal of enthusiasm or disapproval, except to a certain extent, a favourable response regarding small businesses.

Traffic and Transport

55% of respondents never experience difficulties getting out of Spetisbury....just under one third do so occasionally. 56% never have parking problems....29% do so occasionally.....almost 25% experience cars blocking their entrance.

85% think that street parking is a safety risk in the village.

Just under one third of respondents claimed they would be prepared to take part in a voluntary transport service and 38% said they would use such a service occasionally.

Major road danger spots? 89% said there were, especially Crawford Corner and the size/speed of H.G.V.s....88% said that speeding in general was the biggest problem.

Footpaths....89% would like better footpaths....44% would like cycle paths.... 78% considered pavements poor for wheelchairs, pushchairs etc.

By-pass? 77% Yes 16% No There were strong opinions expressed on both sides.

Education

92% stated that the school is important or very important to the village....77% requested adult education classes.....34% holiday play schemes....28% after school clubs.

Housing

60% of respondents felt that there is no room for new housing; 25% think that there is room; 54% have no objection in principle to more housing, although there were some comments about restrictions (e.g. no green field site build) and the need for affordable housing for local people only.

Community Issues

76% belong to the 'Neighbourhood Watch Scheme' and 61% were in favour of a 'good neighbour' type scheme in the village to support the local community.

Most people in Spetisbury are unaware of (41% think we do not have one) or have no opinion (32%) about the service provided by the community police officer.

Leisure and Recreation

There is a high level of interest in keep fit and tennis. 75% would like a children's playground; 78% would like a recreational area for both children and young adults.

Most popular new activities wished for were a Rambling Society and Gardening Club; also a Choir and Music Society.

Village Hall...50 % thought it adequately met the village needs...32% thought it did not....inadequate parking seems to be the main issue.

Parish Church...45% never use it...35% use it less than 6 times p.a....11% visit weekly...nearly one third would use the church as a venue for plays and films given adequate facilities.

Other Issues

73% would like maps of local footpaths; 47% would like leaflets of walks to buy; 41% indicated problems on footpaths and bridle ways with overgrown bushes and nettles; 69% would use a community shop at least weekly if available; 37% use Charlton Marshall Post Office at least occasionally; more access points to the Trailway requested; Trailway extended to Blandford; more dog bins needed.

The Parish News magazine was thought to be a very useful form of communication.

What the Children's Questionnaire tells us

Skateboarding and swimming are popular activities.....the need for a 'park', 'playground', 'swings', 'integral climbing frame / slide / balancing bars', benches to sit on in the playground.

The Youth Questionnaire

Most came from the 11 – 15 age group....the most popular choice was for an out of doors activities area where they could 'meet with friends' swimming football....outdoor sports in general....weatherproof shelter to meet friends in.

General Conclusions

The conclusion of the Dorset Community Action Group, who analysed the questionnaires, was that the information 'gives a very comprehensive and representative picture of the views of the village on a wide spectrum of matters. It should provide much material on which to build an Action Plan for the future of the village'.

What has emerged can be highlighted by the following points:

- Villagers are generally very positive about Spetisbury, its environment and its sense of community.
- It is a good place to live.
- There are issues on which there is division of opinion in some areas, such as housing and the need for a by-pass.
- There are plenty of opportunities to support and further develop the existing range of village facilities and activities.
- There is a great need for dedicated areas for play and recreation, both for young children and teenagers / young adults.
- Improvements are needed for access within and outside the parish (e.g pavements, trailway extension, village hall parking).
- Village shop feasibility study needed.
- The school is highly valued as a community resource.
- High value is placed on community 'Neighbourhood Watch' and 'Good Neighbour' schemes.

Following final consultation with the community and Parish Plan Steering Group, our plan has evolved.

The District and County Councils and their youth organisations, the Police and Dorset Community Action are committed to assisting us to achieve our ambitions.

What is needed now is OUR commitment to take it forward.

**‘IF YOU ALWAYS DO WHAT YOU’VE
ALWAYS DONE, YOU’LL ALWAYS GET
WHAT YOU’VE ALWAYS HAD’**

GET INVOLVED.....

MEET PEOPLE.....

ENJOY THE CHALLENGE.....

MAKE A POSITIVE.....

DIFFERENCE TO.....

OUR COMMUNITY

Contact: Mark Cheesley – Chair of Parish Plan Steering Group and
Parish Councillor

Andrea Cheesley – Parish Clerk

01258 857515 or mcheesley@holytrinityjun.dorset.sch.uk

Janet Isaacs (Secretary Parish Plan Steering Group)

01258 857759 or isaac@eagles.go-plus.net

Anyone on the Parish Plan Steering Group (see Page 5)

SPETISBURY PARISH ACTION PLAN – MAIN PRIORITIES – 2006+

AIM / Page in the full analysis report	ACTION	WHO?	WHEN?	COST	SUCCESS CRITERIA / MONITORING
1. Page 11 To provide a young children's play area with seating for parents/carers.	* To identify an appropriate area of land. * To explore the possibility of using identified land. <hr/> * To consult about facilities needed. * Estimates / funding. * Construction.	Mark Leading Co-opting as necessary	2006/7 <hr/> 2007/8	None <hr/> T.B.A.	1. Land site(s) acquired. 2. Costings identified. <hr/> 3. Necessary equipment identified and priced. 4. Funding accessed – grants / fundraising. 5. Aims 1 and 2 achieved.
2. Page 12 To provide a young persons' outdoor activity / sports area with a weatherproof shelter / meeting place.	As above in 1.	As above	As above	As above	As above
3. Pages 7 and 11 Make relevant bodies aware of villagers concerns about traffic in the village, including views on: <ul style="list-style-type: none"> • Need for by-pass • Lack of pavements • Crawford Corner crossroads danger • HGVs Louse Lane • Street Parking • Speeding • Dangers of cycling on main road • Extending trackway to Blandford 	Send D.C.A. analysis details to relevant bodies.	P.C. Clerk	On-going	None	Visible signs of improvements as a result of pro-active action of P.C.
4. Pages 7 and 9 Further to explore the need and opportunities for educational, leisure and recreational activities within the village.	Consulting with villagers about interest levels for specific activities and organising facilities and facilitators for future provision.	Pam Hills Iris Parker	On-going	T.B.A.	Wide range of activities available for villagers.
5. Page 10 To address issues relating to footpaths, including: <ul style="list-style-type: none"> • Availability of local footpath maps • Leaflets about local walks • Maintenance of footpaths 	<ul style="list-style-type: none"> • Publishing maps and leaflets • Publicising the responsibilities and contact number of the village footpath warden. 	T.B.A. From P.C. <hr/> Footpath Warden	On-going	Cost of publishing covered by P.C. None	Maps and leaflets freely available. <hr/> Villagers clear about communication route regarding footpaths.

SPETISBURY PARISH ACTION PLAN – OTHER ISSUES – 2006+					
AIM / Page in the full analysis Report	ACTION	WHO?	WHEN?	COST	SUCCESS CRITERIA/ MONITORING
A. Pages 10 / 11 To improve the use of the church.	Alert the P.C.C. about villagers' views concerning the church.	Margo Stevens	On-going	None	Suggestions on P.C.C. agenda. More community involvement in church. Annual report from P.C.C. to P.C.
B. Page 8 To address housing issues in the village.	Pass on information to relevant authorities about villagers' views.	P.C.	On-going	None	Consideration of village views by planners having a visible impact.
C. Page 9 To make the Community Police Officer known to all villagers.	Send relevant analysis information to the Community Police Officer to encourage a higher profile e.g. Parish News items; Church fete.....	Andy Young	On-going	None	Higher profile / visibility achieved.
D. Page 8 To explore the setting up of a 'Good Neighbour' scheme.	Explanation of the scheme to villagers. Finding someone to investigate the feasibility and co-ordination of the scheme.	Neil Houghton + Janet Isaacs	Summer 2006 – finding info. – Autumn 2006 – advertising scheme + implementation	None Funding through P.O.P.P to fund various activities	Scheme in place and well known by community. Monitoring showing scheme working effectively.

For all of the issues in the Parish Action Plan, there will be a progress report at the annual P.C. meeting with the village.



River Stour



Water Cress Beds – West End



Footpath bridge – Spetisbury Mill



Gardens – Spetisbury Mill



Pond – Spetisbury Mill Gardens



River Stour



Footpath bridge over the River Stour



Spetisbury Manor



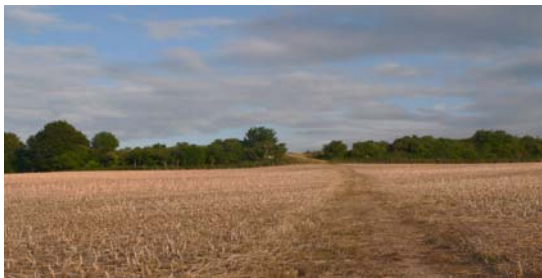
River Stour by cricket field



**Ford for appropriate vehicles
River Stour near cricket field**



Cricket Bat Willows by the Stour



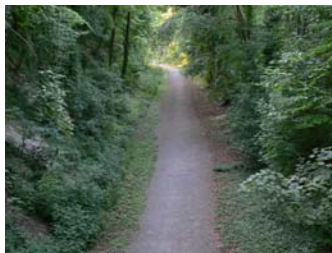
Path to Spetisbury Rings



Spetisbury Rings



Stour Valley from Spetisbury Rings



The Trailway – Disused railway



Local logging business



Local fencing business



Village Hall



The Old Bakery



Swanning Around On The River



Spetisbury Halt (Station)



View From The Walled Gardens



Scenes from Spetisbury and Charlton Marshall Cricket Club



St. John The Baptist Church, Spetisbury



Spetisbury C.E. Primary School



The Drax Arms

15 * Spetisbury Parish Plan

