

# Portland Neighbourhood Plan

## Policy Maps

<b>Sections</b>	<b>Map No</b>
<b>Introduction and Background</b>	
Portland Neighbourhood Plan Area	1
Character Areas	2
Minerals Consultation Area	3
Designated Ecological Areas	4
Designated Geological Areas	5
<b>Policy Number and Policy Name</b>	
<b>Environment</b>	
Port/EN0 Protection of European Sites	4
Port/EN1 Prevention of Flooding and Erosion	6
Port/EN2 Renewable Energy Development	
Port/EN3 The Portland Quarries Nature Park	7
Port/EN4 Local Heritage Assets	
Port/EN5 Historic Piers	
Port/EN6 Defined Development Boundaries	8
Port/EN7 Design and Character	2
Port/EN8 The Verne	9 and 9a
Port/EN9 Public Realm Improvements	
<b>Business and Employment</b>	
Port/BE1 Protecting Existing Business Sites and Premises	10 and 10a-10d
Port/BE2 Up-grading of Existing Employment Sites and Premises	
Port/BE3 New Employment Premises	
Port/BE4 New Business Centres	
Port/BE5 Facilitating Home Working	
Port/BE6 The Northern Arc	11
<b>Housing</b>	
Port/HS1 Housing Mix	
Port/HS2 Community Housing Assets	
Port/HS3 Second Homes	
Port/HS4 Hardy Block	
<b>Transport</b>	
Port/TR1 Improving Public Transport Links	
Port/TR2 Improving the Transport Infrastructure	
Port/TR3 Reducing Parking Problems	
Port/TR4 Increasing Travel Links	
<b>Shopping and Services</b>	
Port/SS1 Reinforcing Local and Neighbourhood Centres	12 and 12a – 12d
<b>Community Recreation</b>	
Port/CR1 Protecting Recreation Spaces	13
Port/CR2 Local Green Space	14 and 14a – 14d
Port/CR3 Allotments	
Port/CR4 Sites of Open Space Value	
Port/CR5 New Community Facilities	
Port/CR6 Community and Visitor Events	
<b>Sustainable Tourism</b>	
Port/ST1 Sustainable Tourism Development	
Port/ST2 Beach Huts	15 and 15a
Port/ST3 Tourist Trails	16
Port/ST4 Marine Berths for Tourists	

# Update Information

## Adjustments since Regulation 14 Consultation

Map 7—Quarry Nature Park . Inclusion of additional areas as notified by the Local Planning Authority

Map 8c— Correct alignment to Bumpers Lane development—west side

Map 12a—Castletown slight realignment to western boundary and north east to remove slipways.

Map 12b—Fortuneswell— Slight tidying of NW boundary and removal of line between the two areas.

Map 12c—Chiswell shown as one area. Slight tidying to Northern Boundary

Map 12d—Easton shown as one area. Tidying of Tesco Car Park area.

## Issues to highlight

Map 10—Widening of Policy Area at Southwell Business Park

Albion Stone Policy area covers the area previously enclosed by the Development Boundary

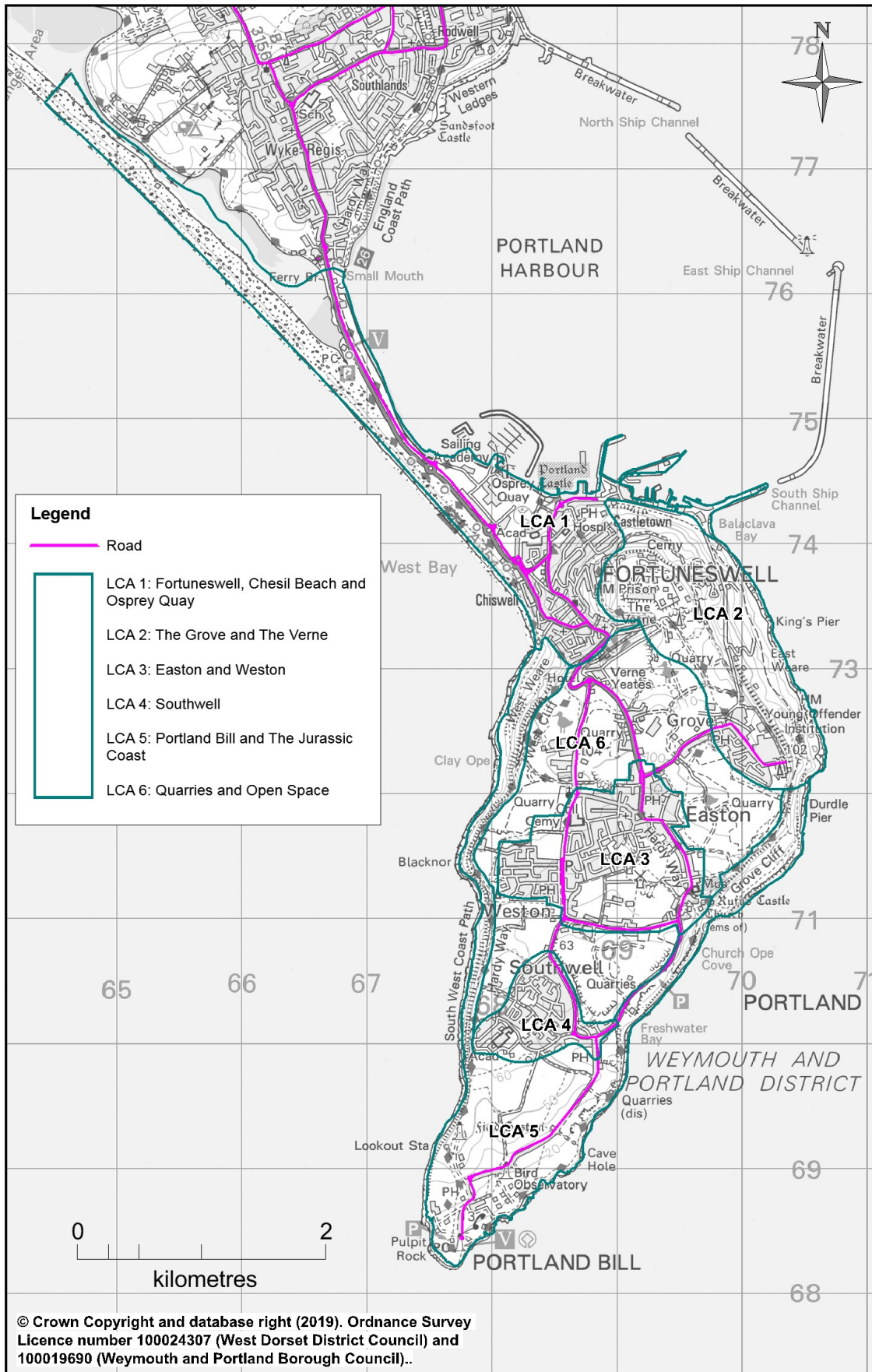
Stone Firms Policy Area

Map 1– Portland Neighbourhood Plan Area

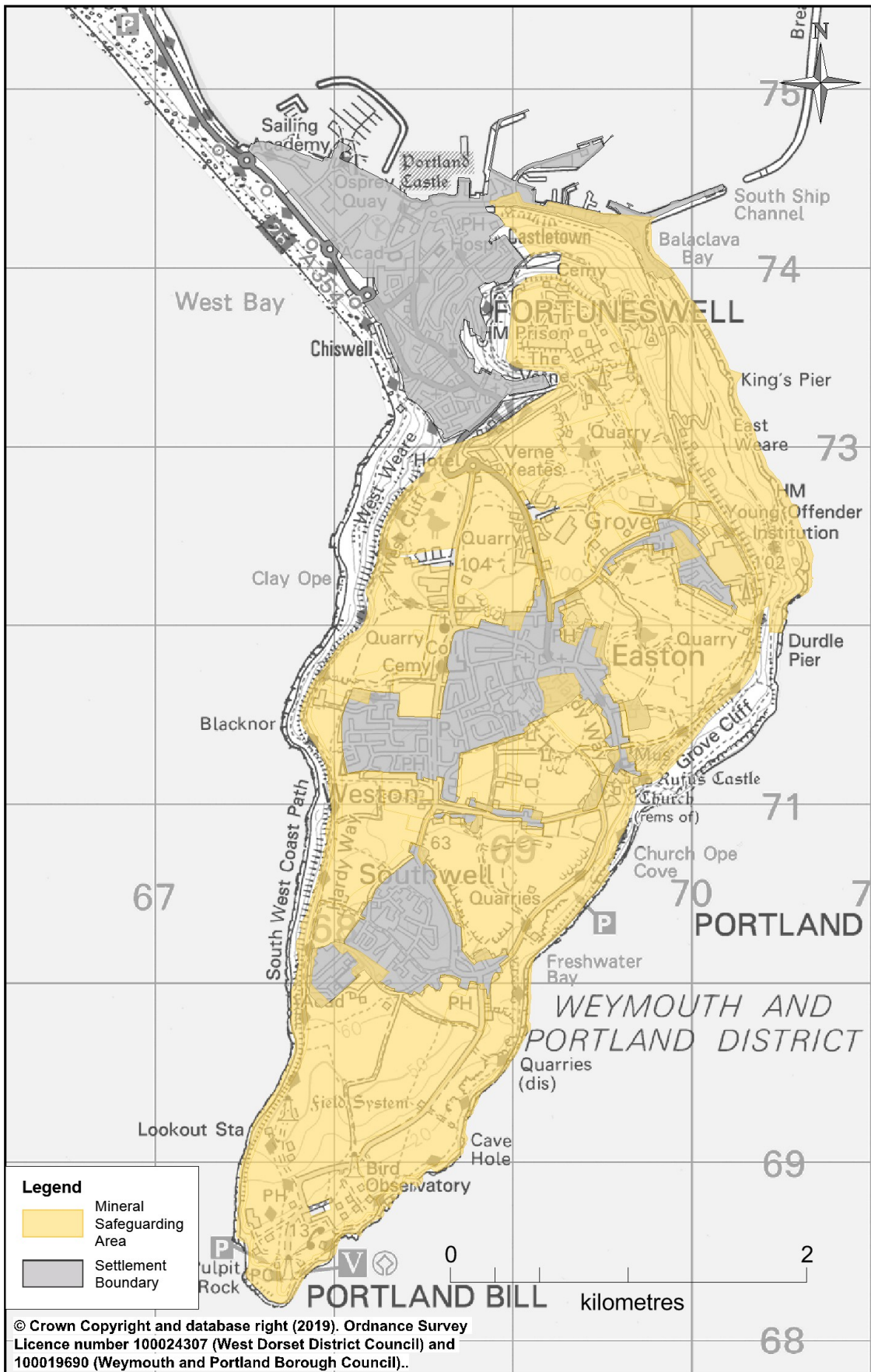




# Map 2—The Six Character Areas of Portland

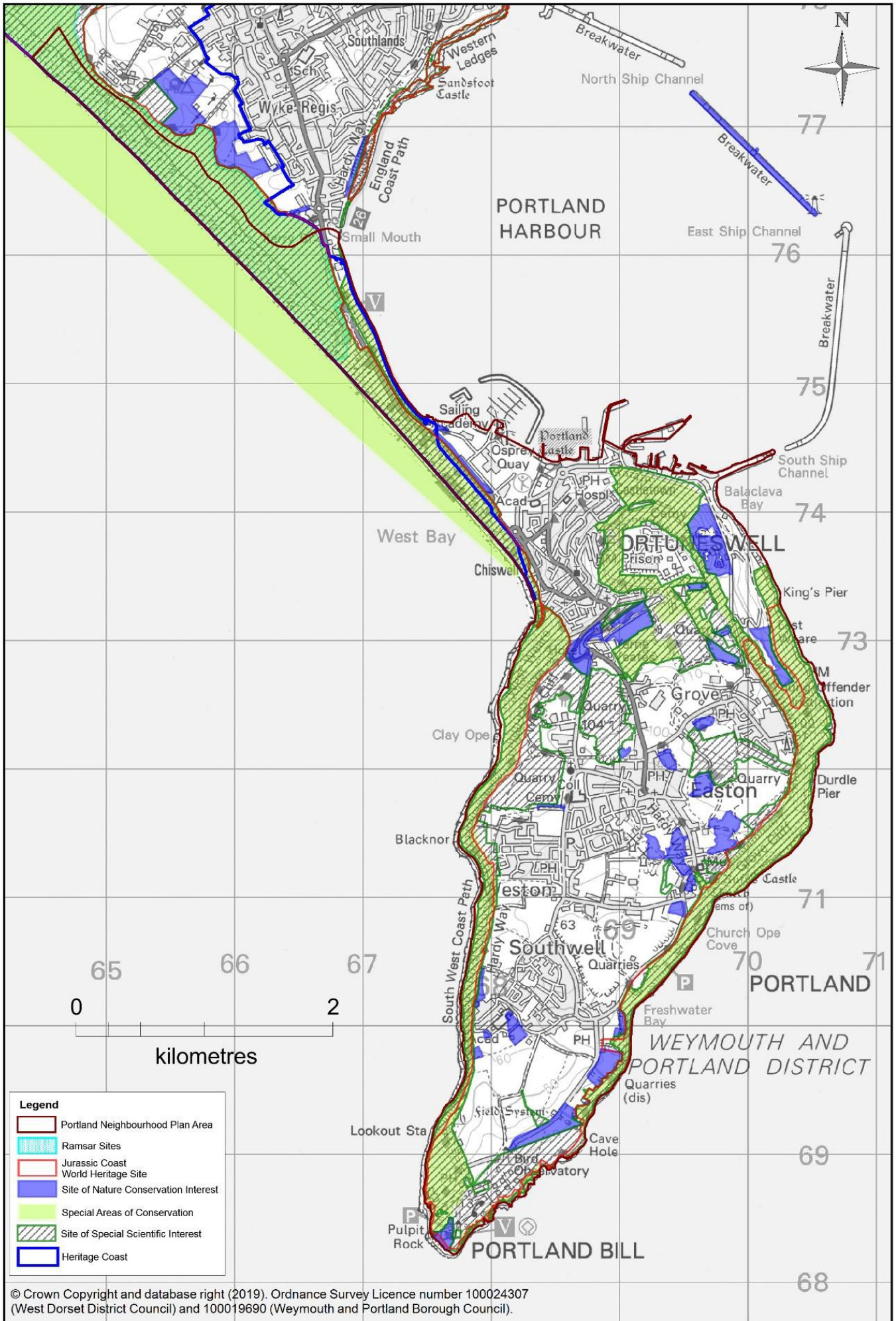


# Map 3—Portland Mineral Consultation Area





Map 4—Designated Ecological Areas of Portland

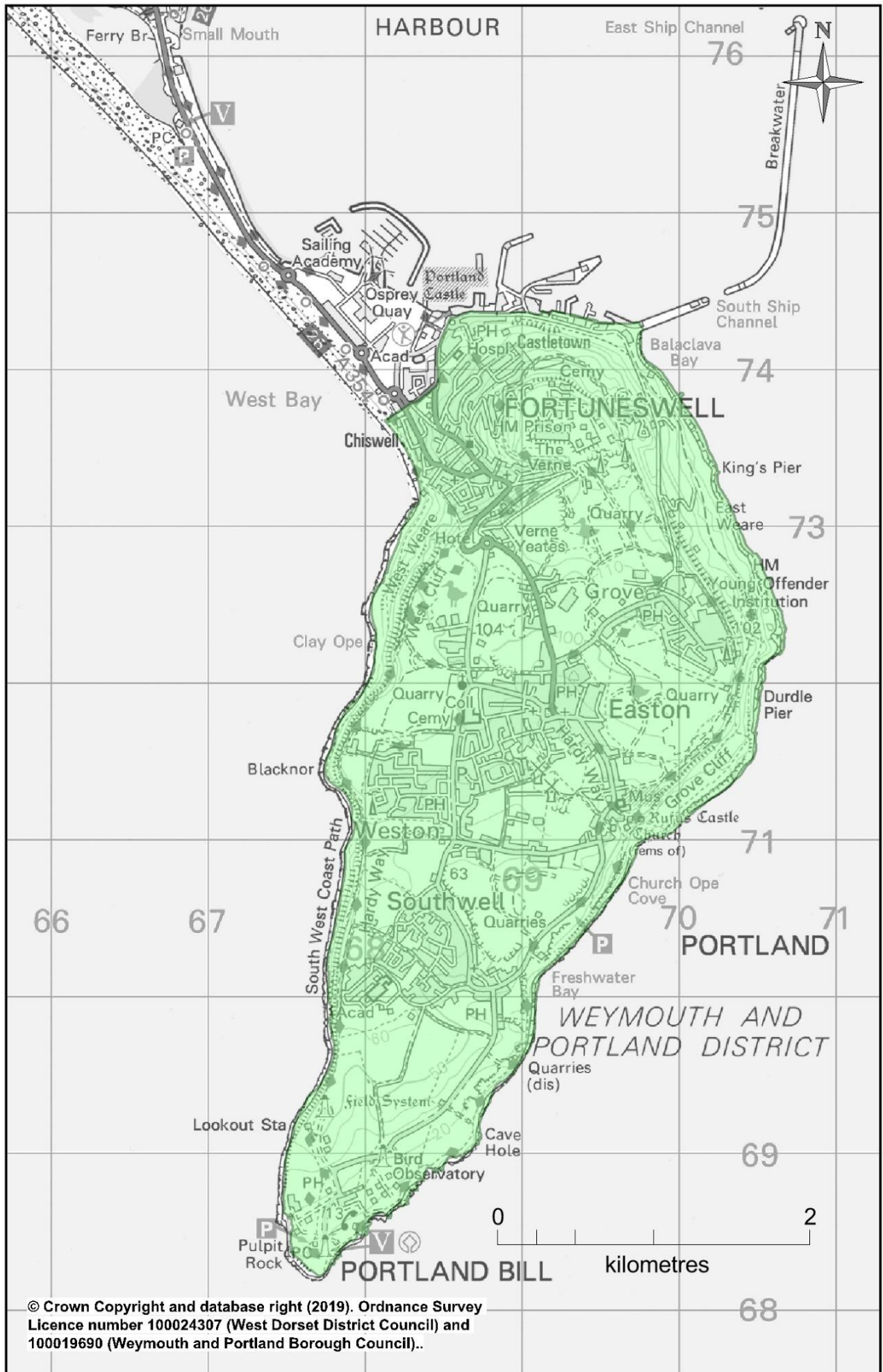


**Legend**

	Portland Neighbourhood Plan Area
	Ramsar Sites
	Jurassic Coast World Heritage Site
	Site of Nature Conservation Interest
	Special Areas of Conservation
	Site of Special Scientific Interest
	Heritage Coast

© Crown Copyright and database right (2019). Ordnance Survey Licence number 100024307 (West Dorset District Council) and 100019690 (Weymouth and Portland Borough Council).

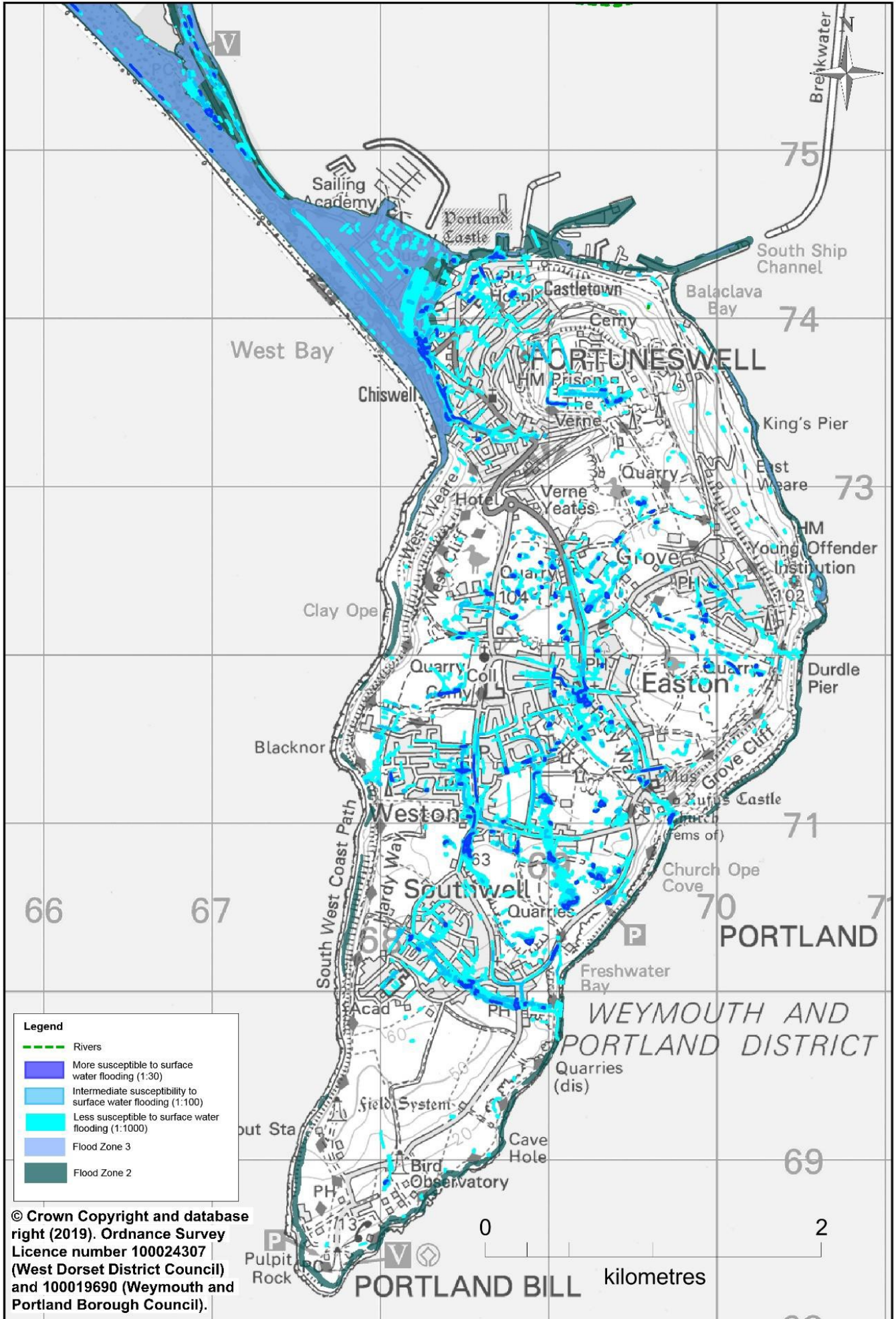
**Map 5—Designated Geological Areas on Portland**



© Crown Copyright and database right (2019). Ordnance Survey  
 Licence number 100024307 (West Dorset District Council) and  
 100019690 (Weymouth and Portland Borough Council)..

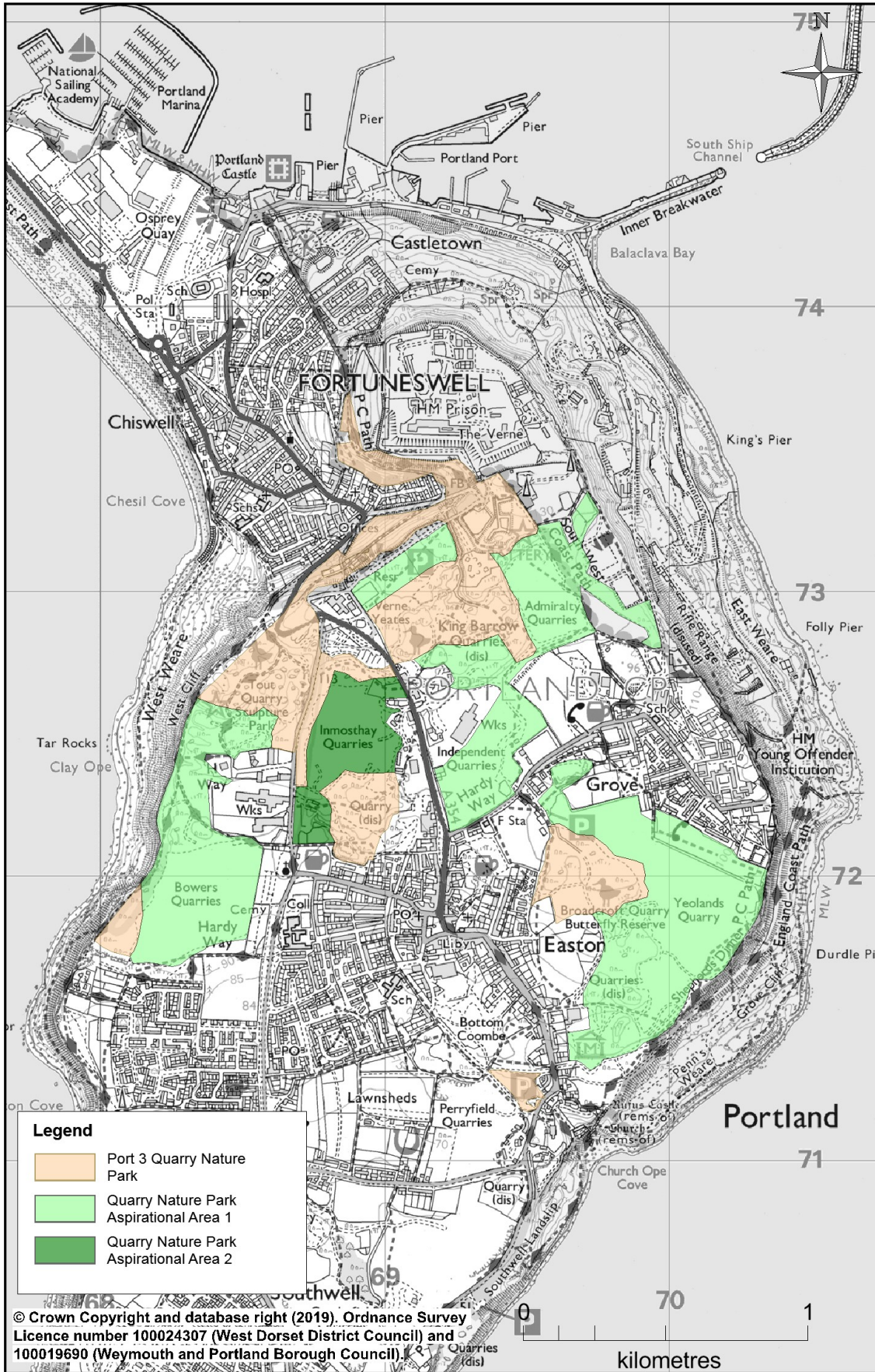


**Map 6— Portland Flood Zones and Areas**

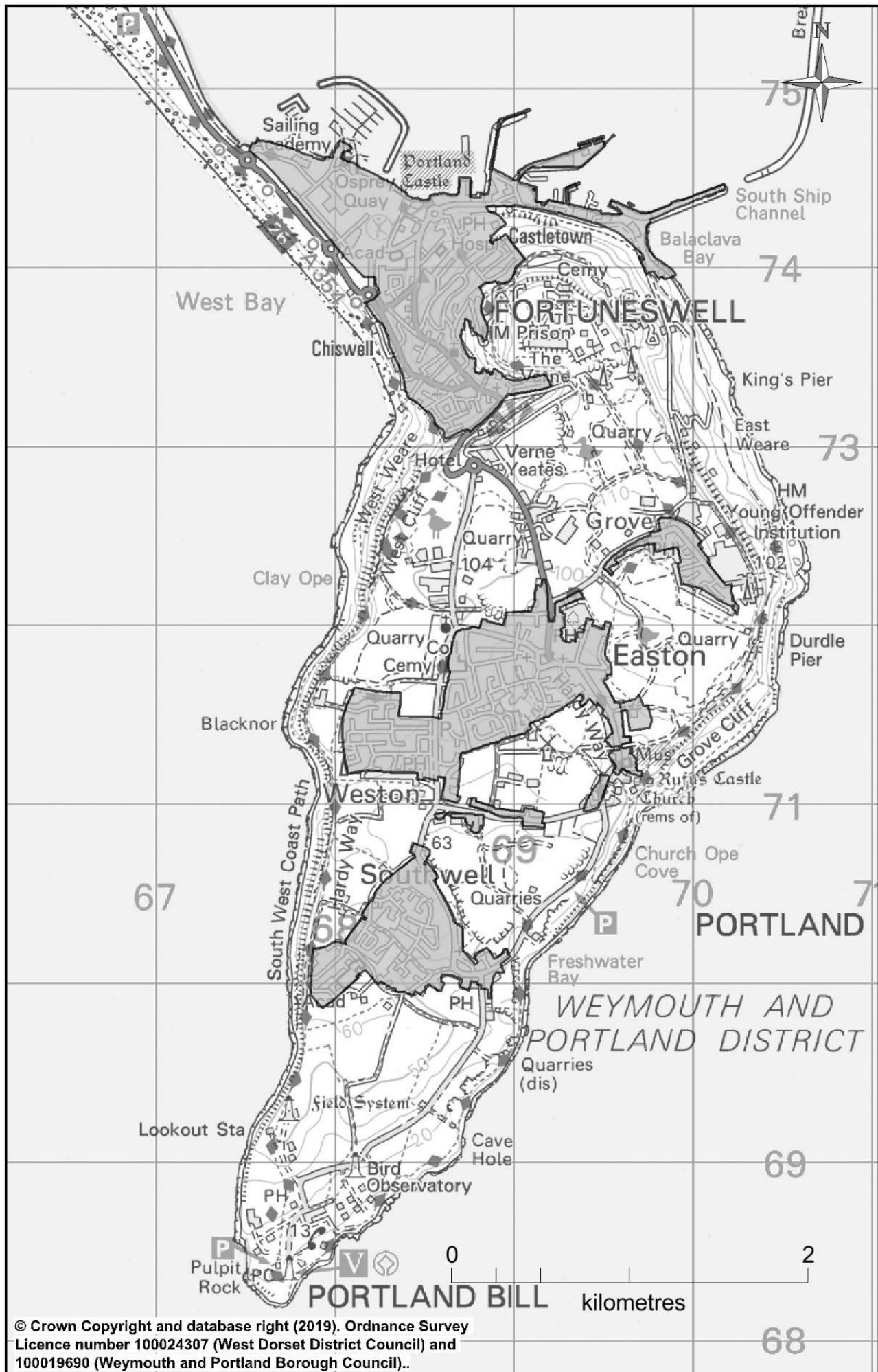




# Map 7—Portland Quarries Nature Park

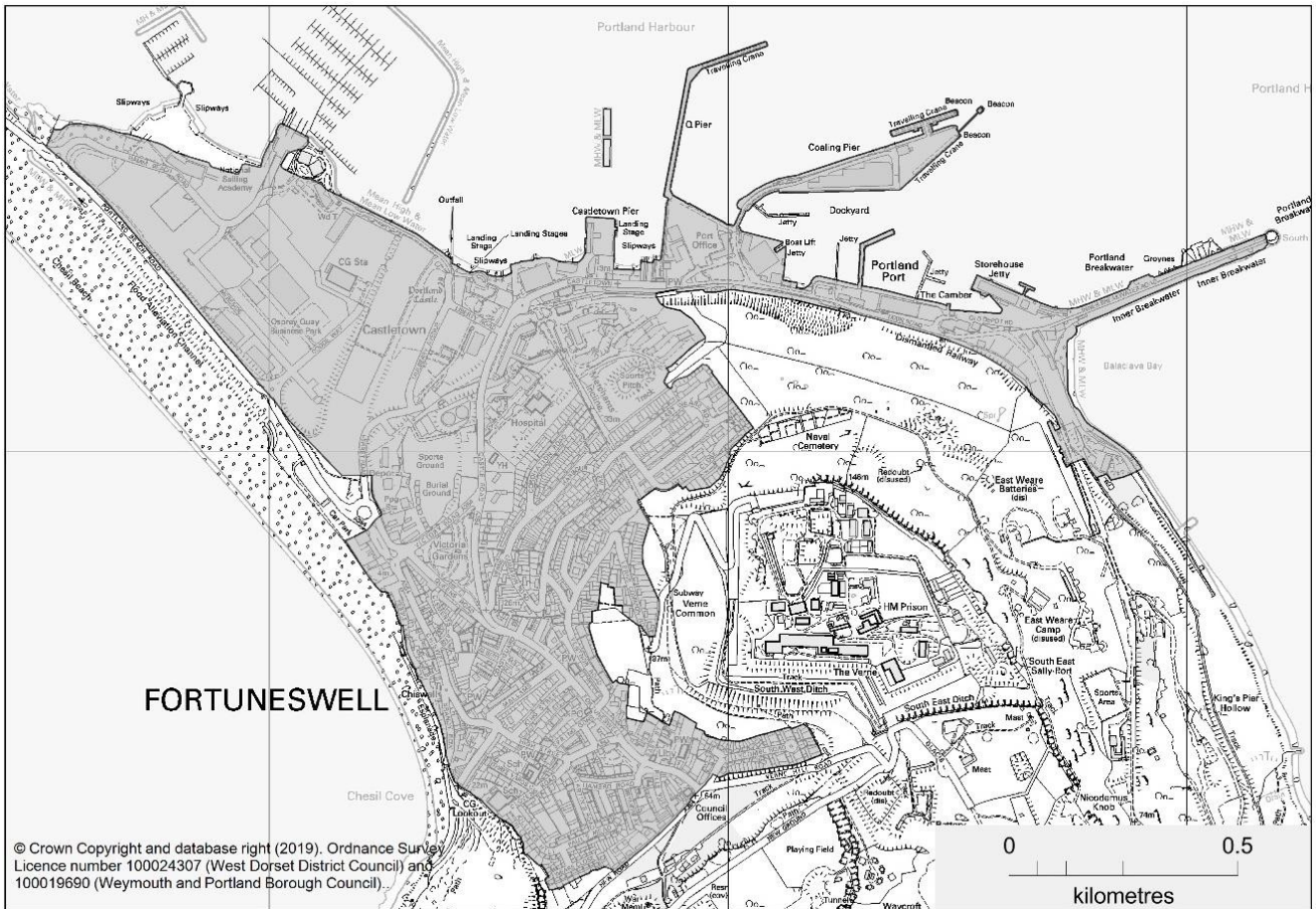


Map 8—Portland Defined Development Boundaries





**Map 8a—Portland Defined Development Boundaries—Underhill**

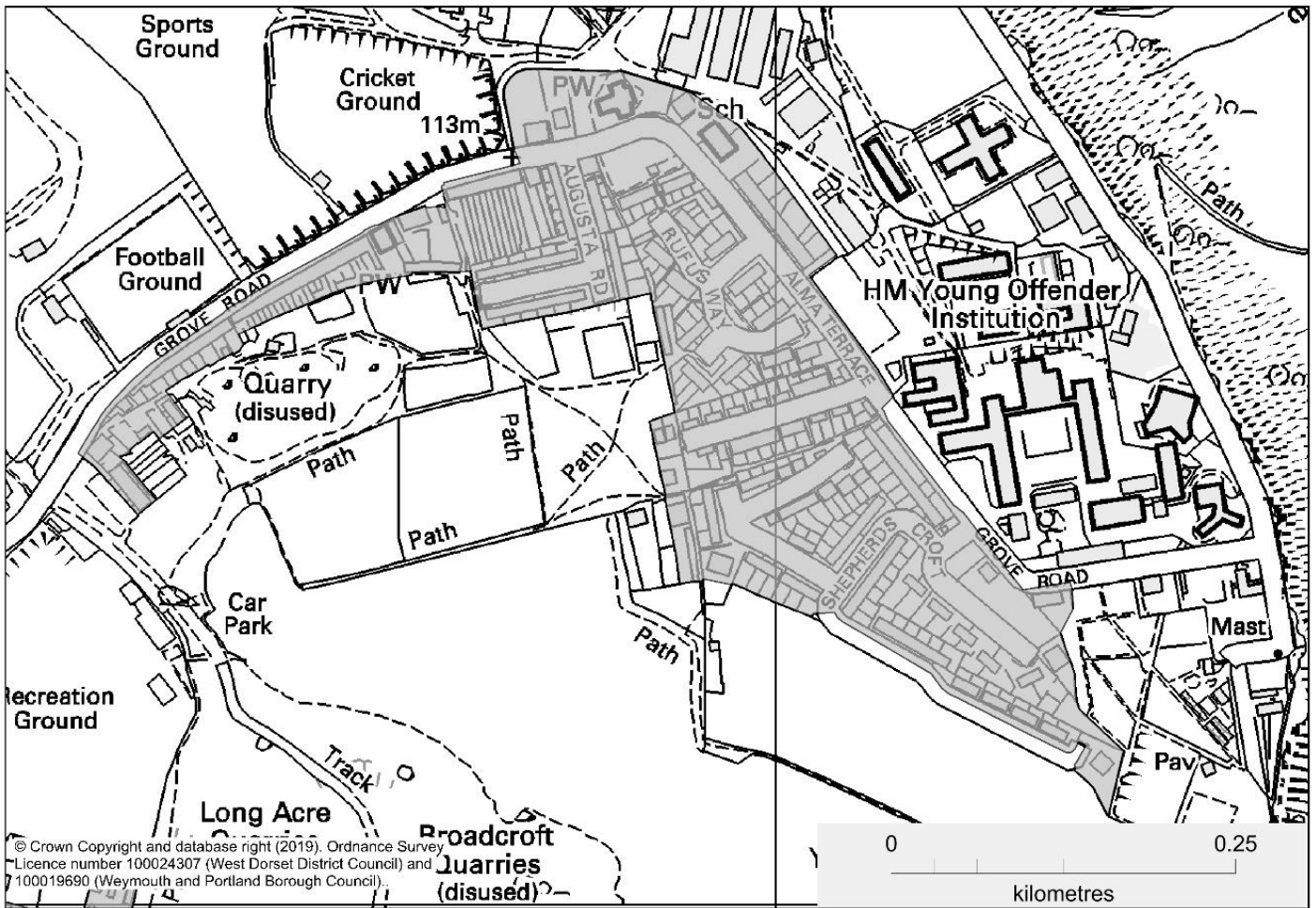


**Map 8b—Portland Defined Development Boundaries—East /Weston**





**Map 8c—Portland Defined Development Boundaries—Grove**

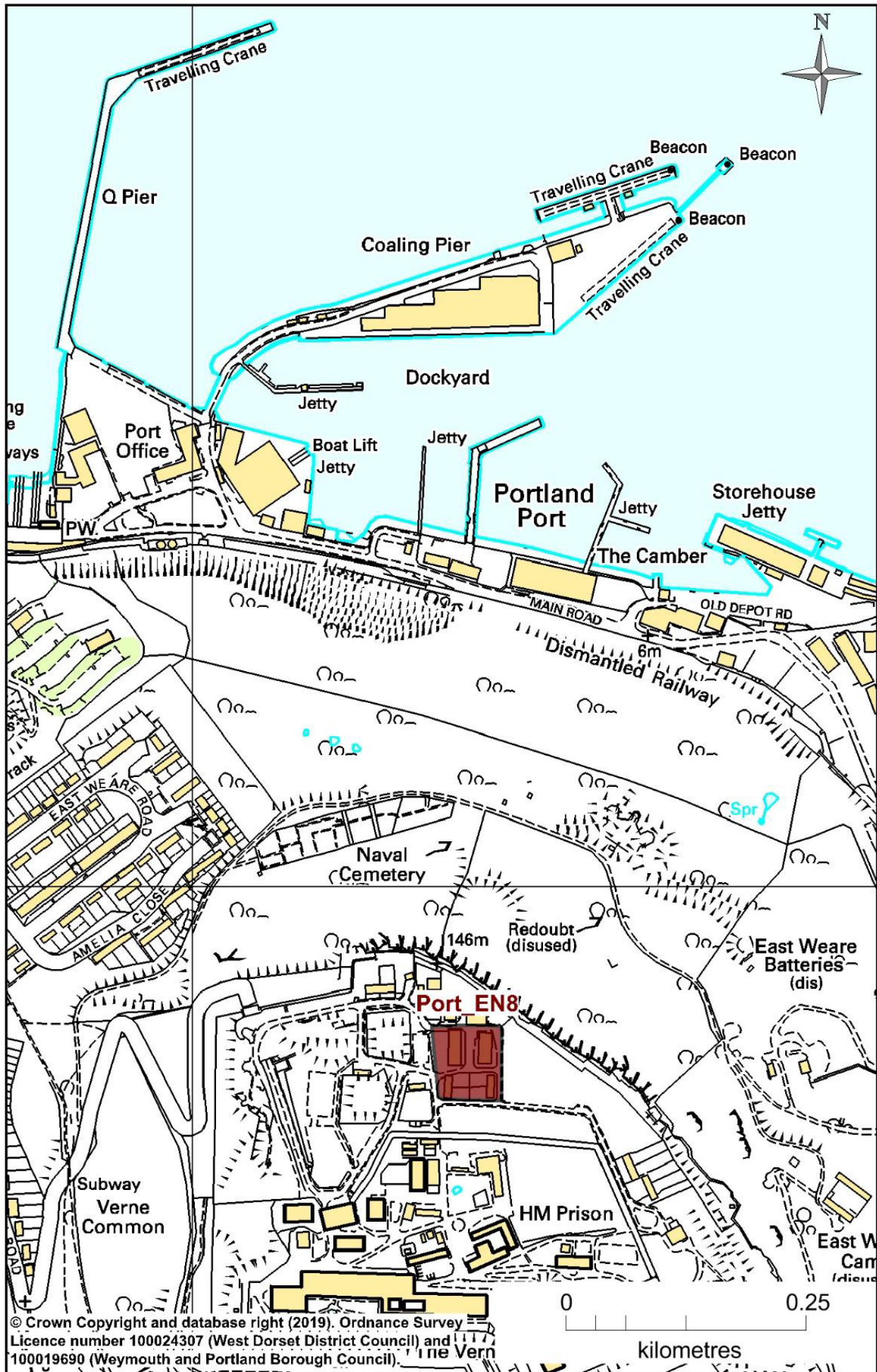


**Map 8d—Portland Defined Development Boundaries—Southwell**





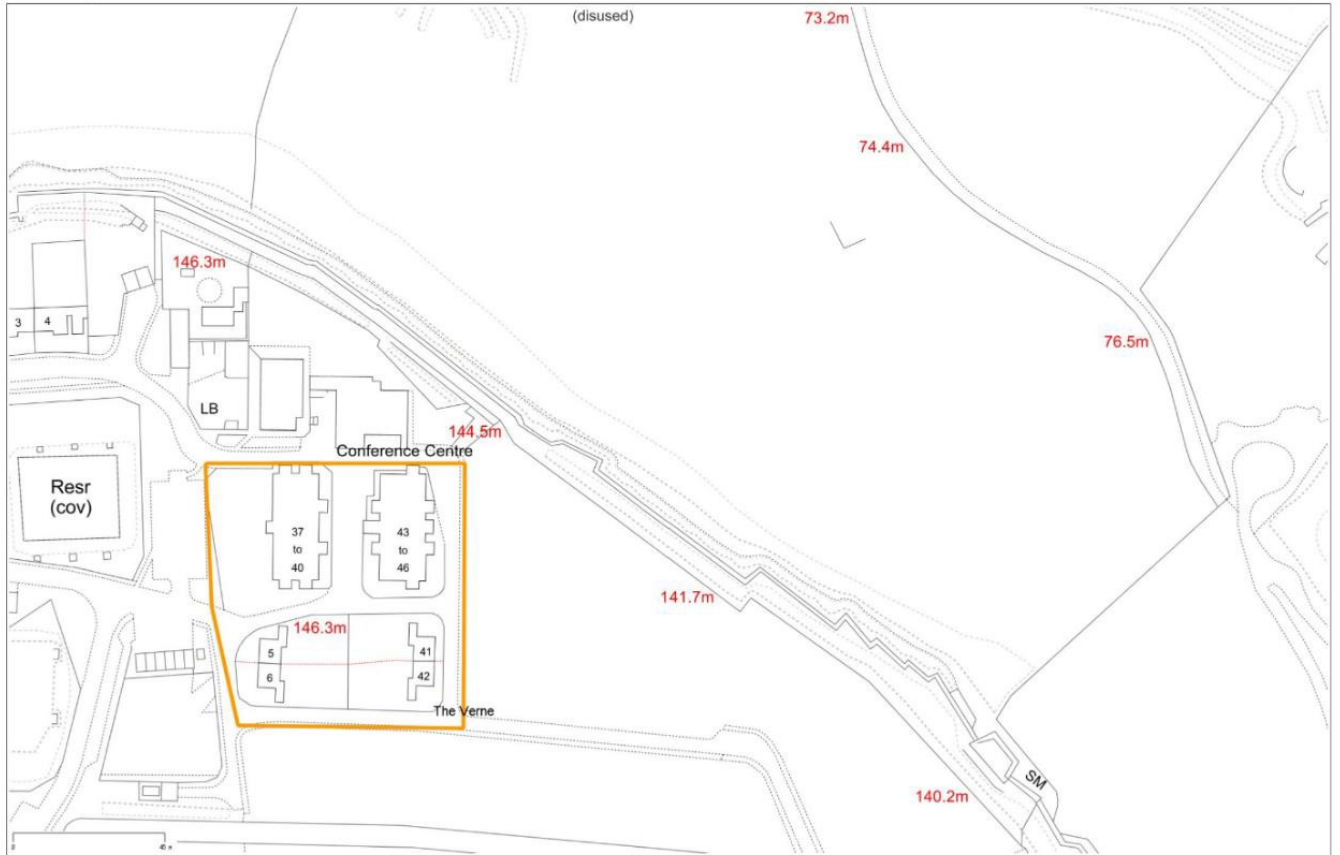
Map 9— The Verne Portland—Context



# Map 9a— The Verne Portland—Detail



Portland CP 



Date Created: 17-4-2019 | Map Centre (Easting/Northing): 369381 / 73862 | Scale: 1:1425 | © Crown copyright and database right. All rights reserved (100054902) 2019 © Contains Ordnance Survey Data : Crown copyright and database right 2019